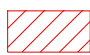

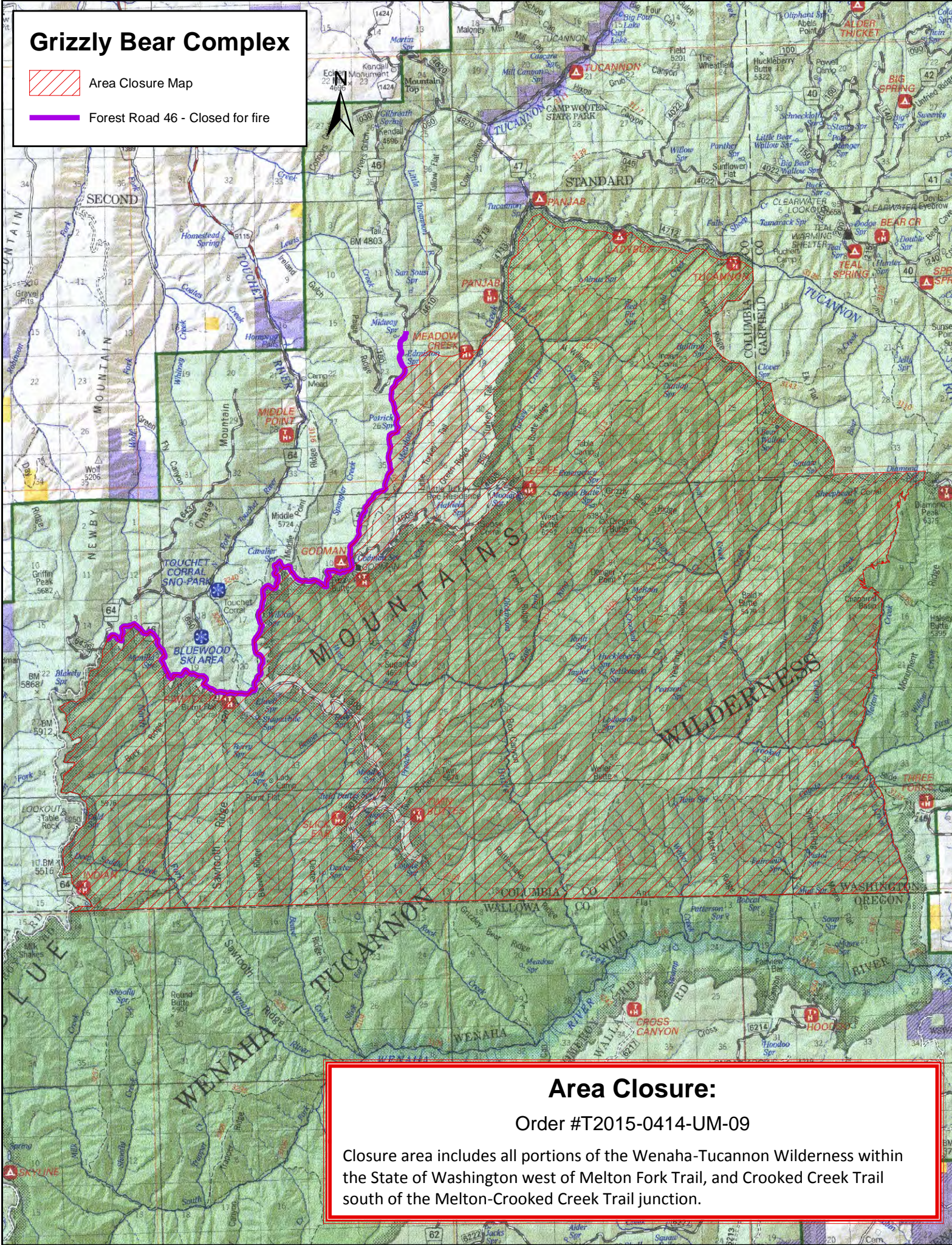


# Grizzly Bear Complex

-  Area Closure Map
-  Forest Road 46 - Closed for fire



## Area Closure:

Order #T2015-0414-UM-09

Closure area includes all portions of the Wenaha-Tucannon Wilderness within the State of Washington west of Melton Fork Trail, and Crooked Creek Trail south of the Melton-Crooked Creek Trail junction.