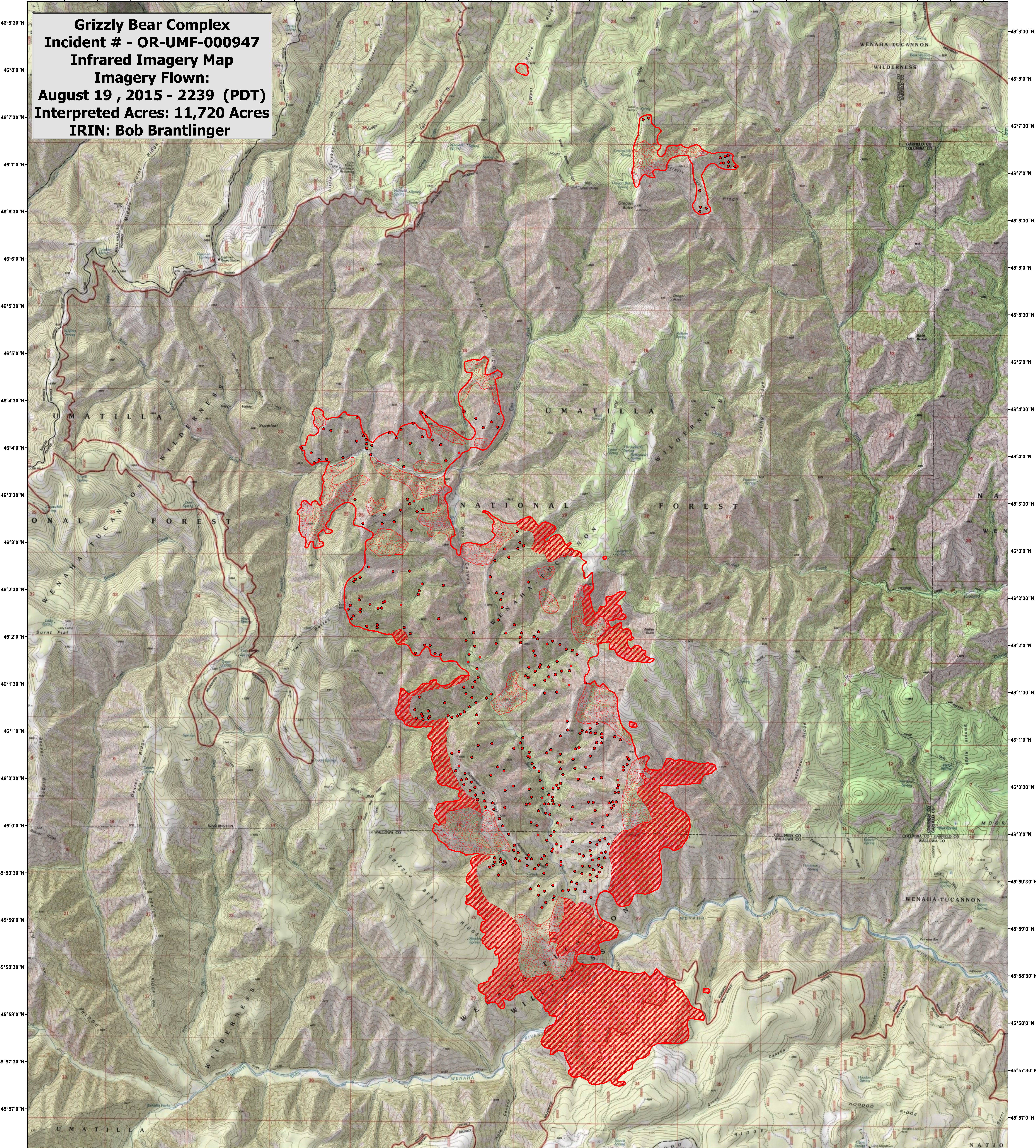

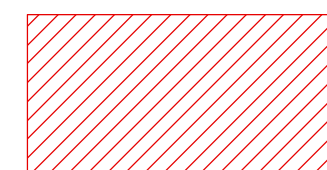
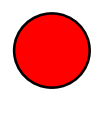
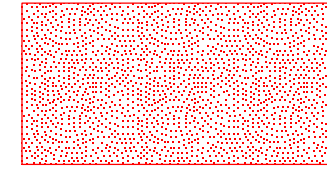


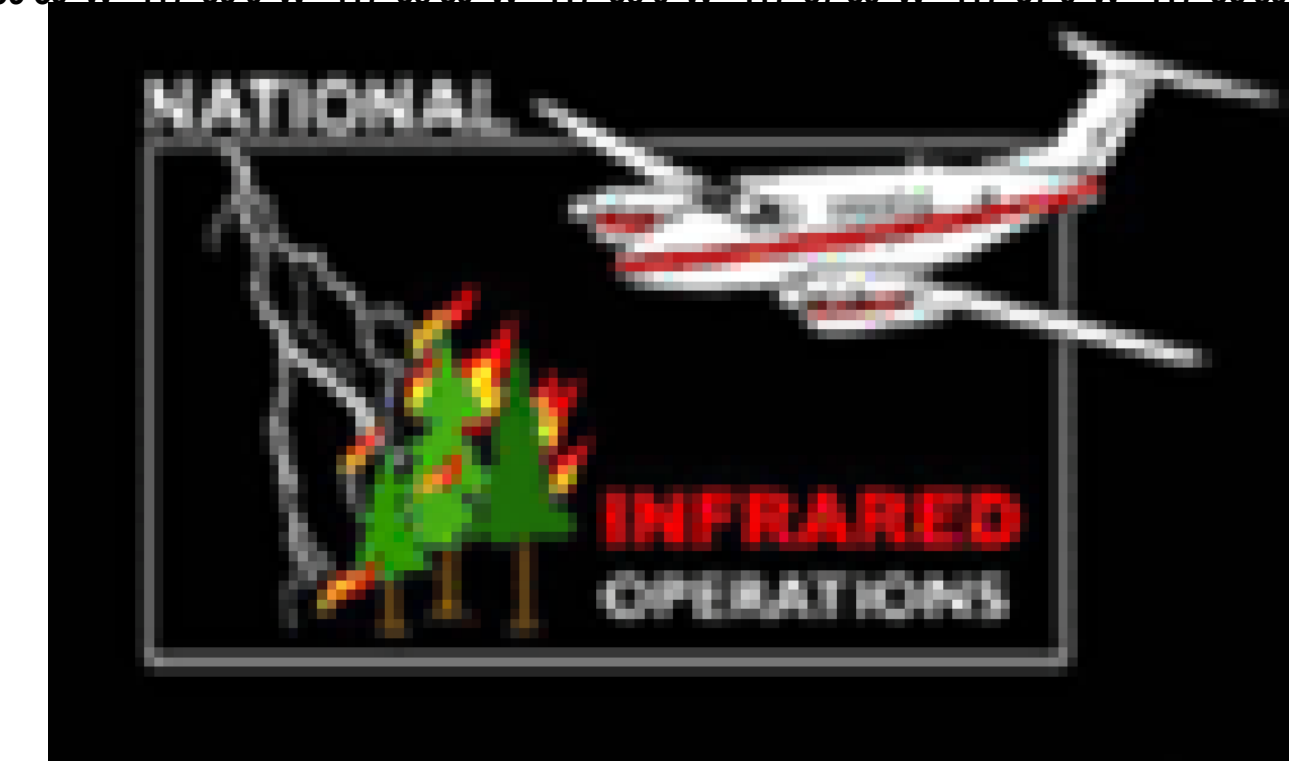
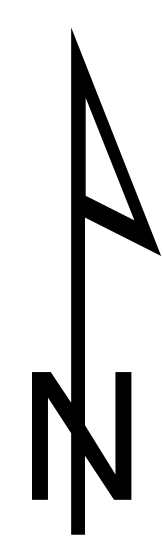
117°50'0"W 117°49'30"W 117°49'0"W 117°48'30"W 117°48'0"W 117°47'30"W 117°47'0"W 117°46'30"W 117°46'0"W 117°45'30"W 117°45'0"W 117°44'30"W 117°44'0"W 117°43'30"W 117°43'0"W 117°42'30"W 117°42'0"W 117°41'30"W 117°41'0"W 117°40'30"W 117°40'0"W 117°39'30"W 117°39'0"W 117°38'30"W 117°38'0"W 117°37'30"W 117°37'0"W 117°36'30"W 117°36'0"W 117°35'30"W

**Grizzly Bear Complex**  
**Incident # - OR-UMF-000947**  
**Infrared Imagery Map**  
**Imagery Flown:**  
**August 19, 2015 - 2239 (PDT)**  
**Interpreted Acres: 11,720 Acres**  
**IRIN: Bob Brantlinger**



**Legend**

-  **Heat Perimeter**
-  **Intense Heat**
-  **Isolated Heat Source**
-  **Scattered Heat Source**



0 1 2 4 Miles