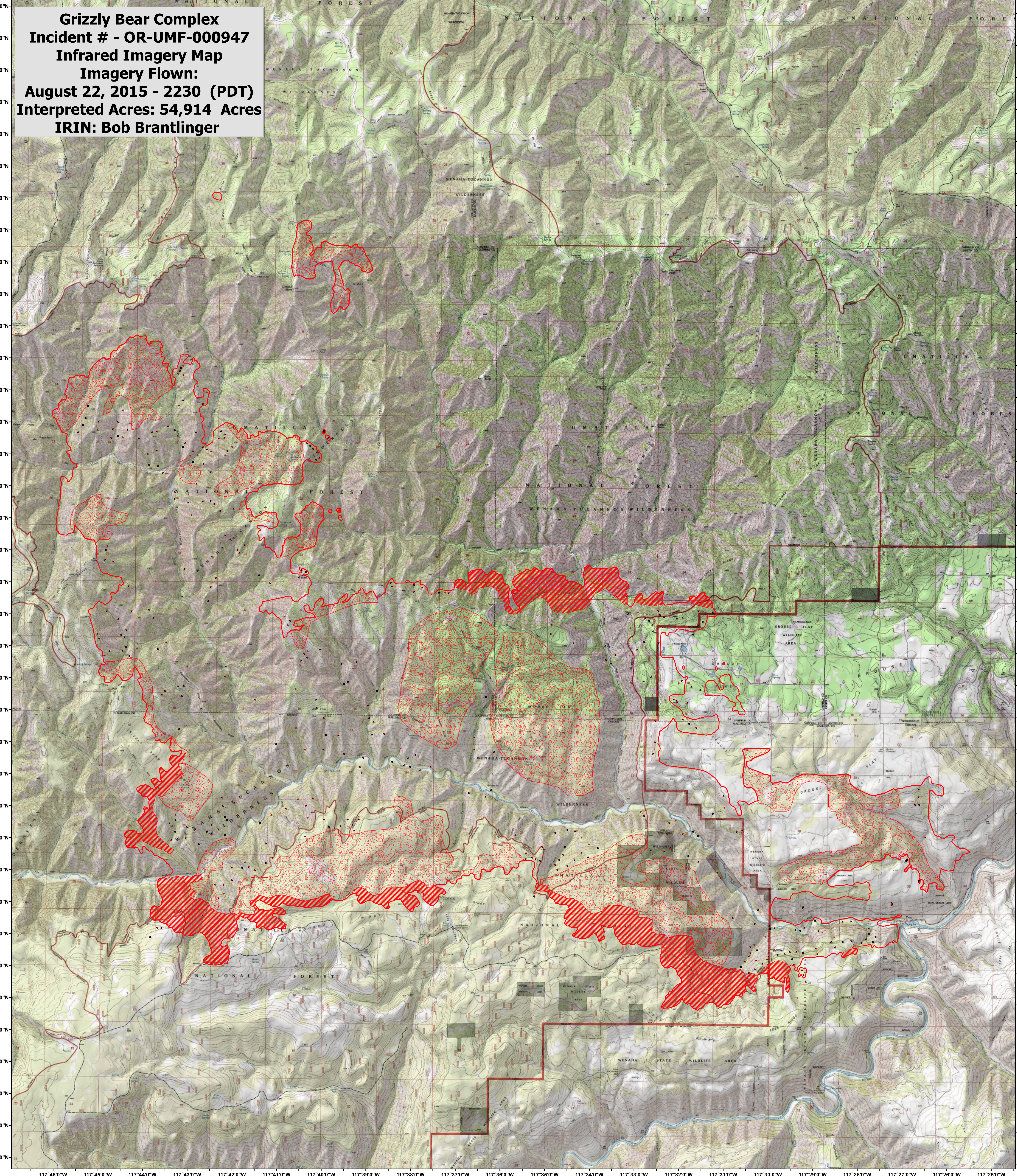



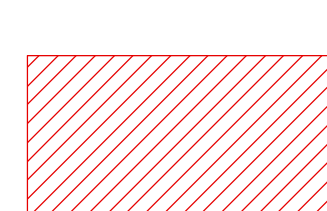
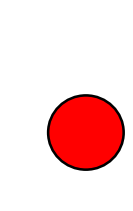
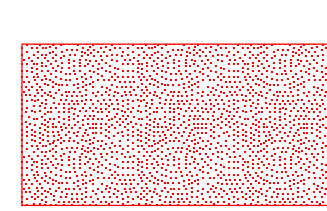
117°47'0"W 117°46'0"W 117°45'0"W 117°44'0"W 117°43'0"W 117°42'0"W 117°41'0"W 117°40'0"W 117°39'0"W 117°38'0"W 117°37'0"W 117°36'0"W 117°35'0"W 117°34'0"W 117°33'0"W 117°32'0"W 117°31'0"W 117°30'0"W 117°29'0"W 117°28'0"W 117°27'0"W 117°26'0"W 117°25'0"W

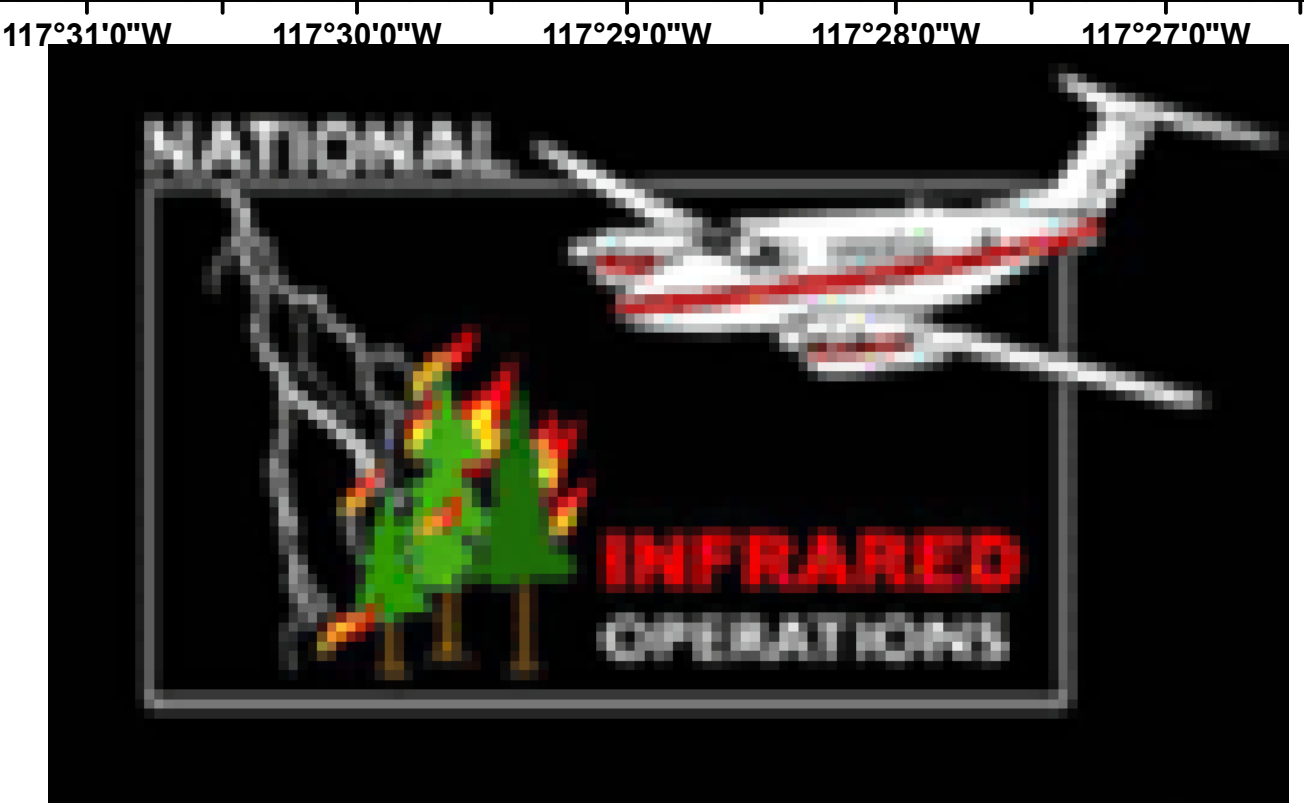
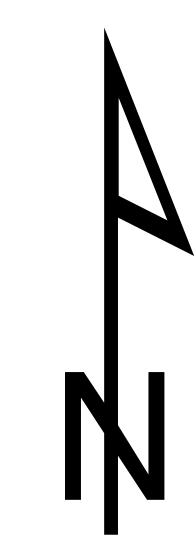
**Grizzly Bear Complex**  
**Incident # - OR-UMF-000947**  
**Infrared Imagery Map**  
**Imagery Flown:**  
**August 22, 2015 - 2230 (PDT)**  
**Interpreted Acres: 54,914 Acres**  
**IRIN: Bob Brantlinger**



117°46'0"W 117°45'0"W 117°44'0"W 117°43'0"W 117°42'0"W 117°41'0"W 117°40'0"W 117°39'0"W 117°38'0"W 117°37'0"W 117°36'0"W 117°35'0"W 117°34'0"W 117°33'0"W 117°32'0"W 117°31'0"W 117°30'0"W 117°29'0"W 117°28'0"W 117°27'0"W 117°26'0"W 117°25'0"W

**Legend**

-  **Heat Perimeter**
-  **Intense Heat**
-  **Isolated Heat Source**
-  **Scattered Heat Source**



0 1 2 4 6 Miles