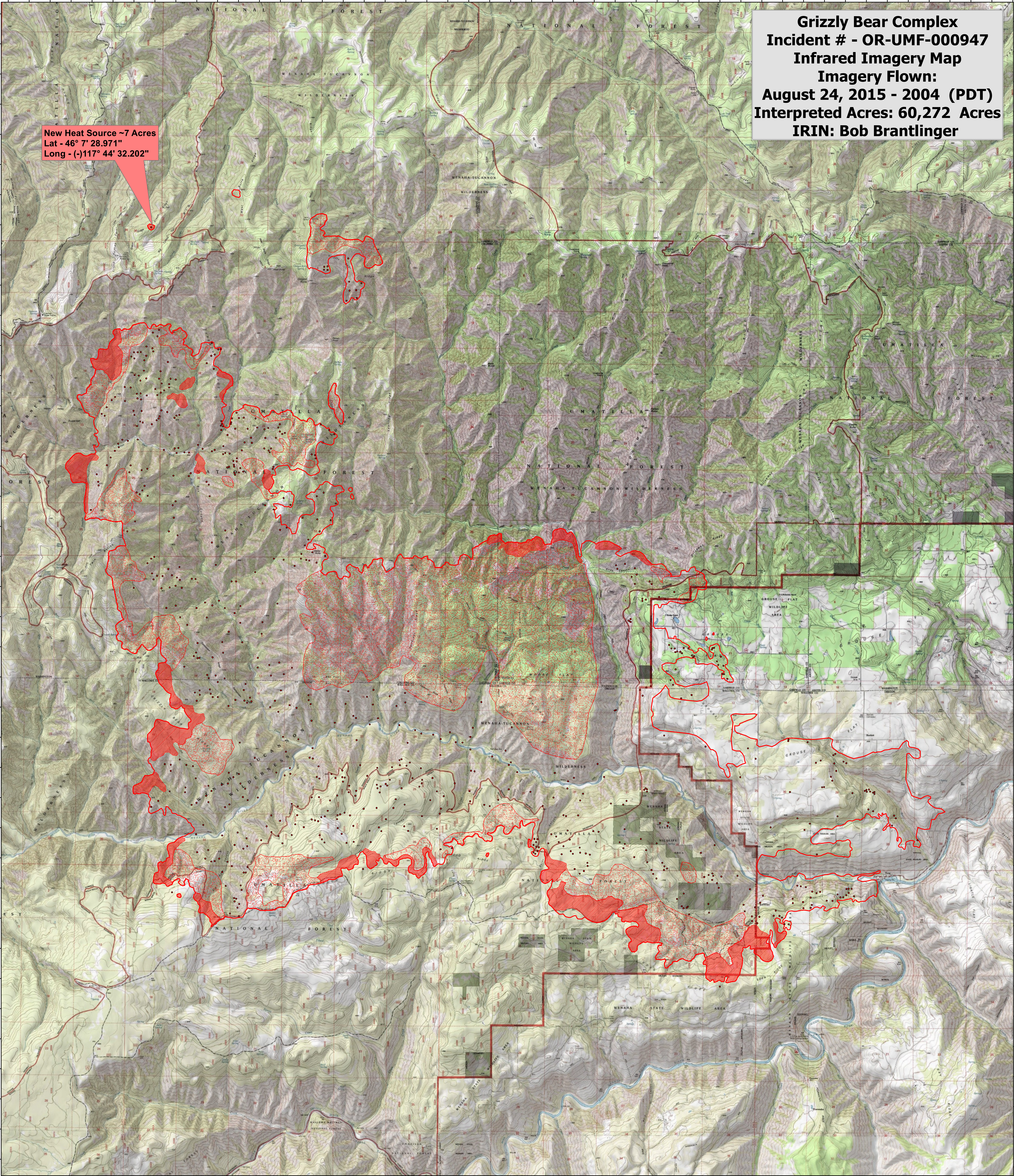



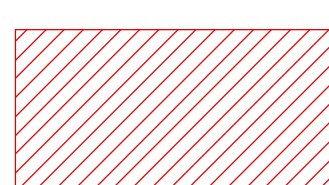
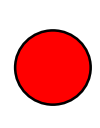
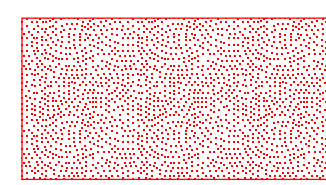
117°48'0"W 117°47'0"W 117°46'0"W 117°45'0"W 117°44'0"W 117°43'0"W 117°42'0"W 117°41'0"W 117°40'0"W 117°39'0"W 117°38'0"W 117°37'0"W 117°36'0"W 117°35'0"W 117°34'0"W 117°33'0"W 117°32'0"W 117°31'0"W 117°30'0"W 117°29'0"W 117°28'0"W 117°27'0"W 117°26'0"W 117°25'0"W 117°24'0"W

**Grizzly Bear Complex  
Incident # - OR-UMF-000947  
Infrared Imagery Map  
Imagery Flown:  
August 24, 2015 - 2004 (PDT)  
Interpreted Acres: 60,272 Acres  
IRIN: Bob Brantlinger**

**New Heat Source ~7 Acres  
Lat - 46° 7' 28.971"  
Long - (-)117° 44' 32.202"**



**Legend**

-  **Heat Perimeter**
-  **Intense Heat**
-  **Isolated Heat Source**
-  **Scattered Heat Source**

