

Grizzly Bear Complex Fire

Heat Acres: 75,530

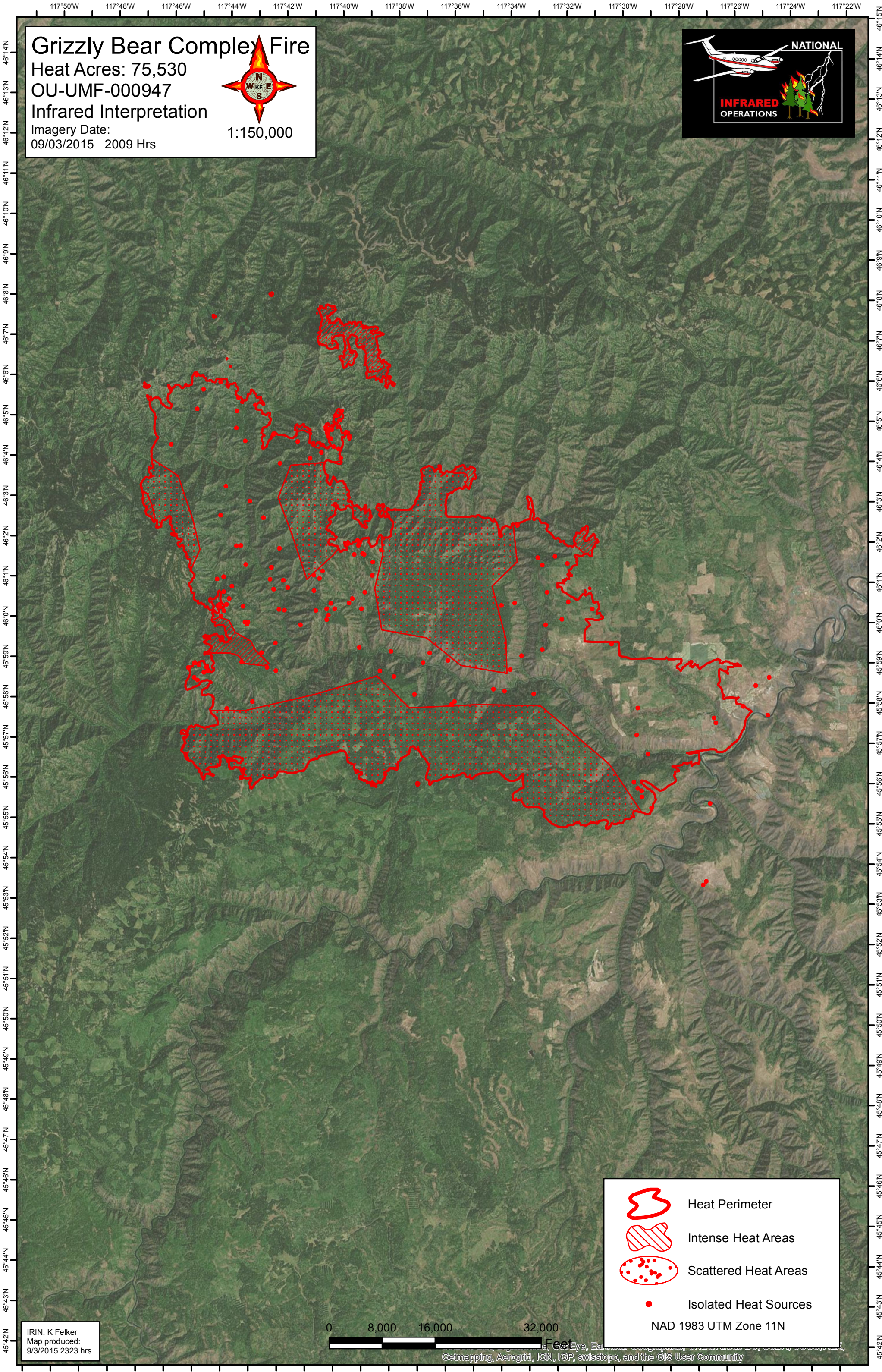
OU-UMF-000947





Infrared Interpretation

Imagery Date:
09/03/2015 2009 Hrs



1:150,000



-  Heat Perimeter
-  Intense Heat Areas
-  Scattered Heat Areas
-  Isolated Heat Sources

NAD 1983 UTM Zone 11N

IRIN: K Felker
Map produced:
9/3/2015 2323 hrs

0 8,000 16,000 32,000 Feet

Getmapping, Aerogrid, IGN, IGP, swisstopo, and the GIS User Community