

Grizzly Bear Complex
Pilot Map
9-01-2015 0600



TFR as of 8-26-2015



Uncontrolled Fire Edge



Helispot



Division



Branch



Roads

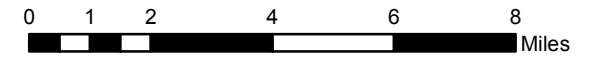


Water

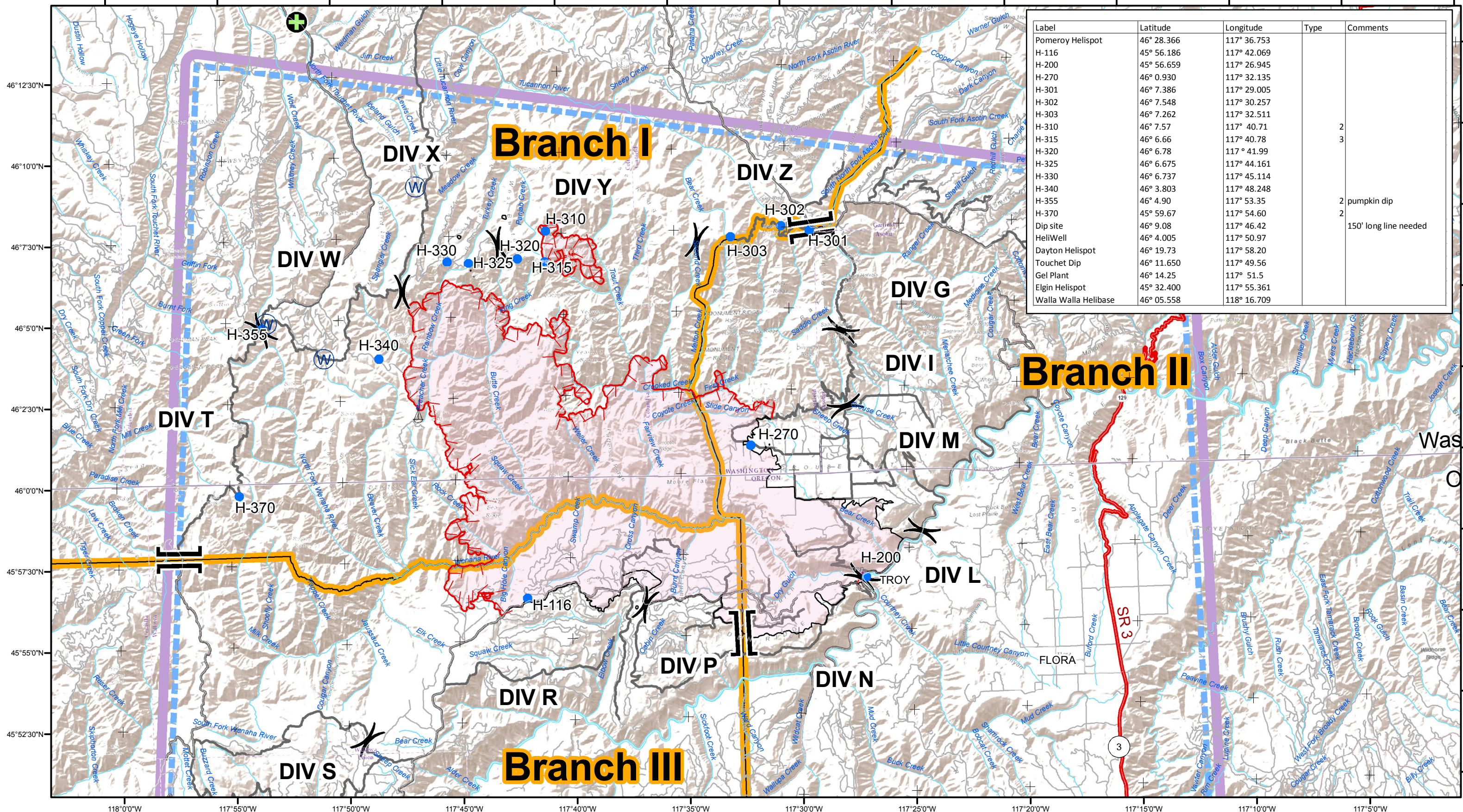


OR-UMF-000947

Perimeter IR & Field Observation: 74,154 Acres
IR Flown: 8/30/2015 2051



CS 8/31/2015 2048



Label	Latitude	Longitude	Type	Comments
Pomeroy Helispot	46° 28.366	117° 36.753		
H-116	45° 56.186	117° 42.069		
H-200	45° 56.659	117° 26.945		
H-270	46° 0.930	117° 32.135		
H-301	46° 7.386	117° 29.005		
H-302	46° 7.548	117° 30.257		
H-303	46° 7.262	117° 32.511		
H-310	46° 7.57	117° 40.71		2
H-315	46° 6.66	117° 40.78		3
H-320	46° 6.78	117° 41.99		
H-325	46° 6.675	117° 44.161		
H-330	46° 6.737	117° 45.114		
H-340	46° 3.803	117° 48.248		
H-355	46° 4.90	117° 53.35		2 pumpkin dip
H-370	45° 59.67	117° 54.60		2
Dip site	46° 9.08	117° 46.42		150' long line needed
HelWell	46° 4.005	117° 50.97		
Dayton Helispot	46° 19.73	117° 58.20		
Touchet Dip	46° 11.650	117° 49.56		
Gel Plant	46° 14.25	117° 51.5		
Elgin Helispot	45° 32.400	117° 55.361		
Walla Walla Helibase	46° 05.558	118° 16.709		