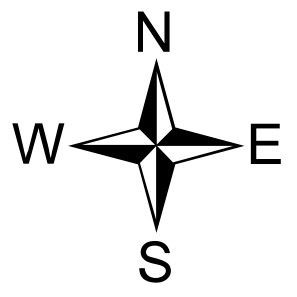


Grizzly Bear Complex

OR-UMF-000947

REHAB: DIV N
Sept. 6, 2015
GIS Acres: 75,269



- Drop Point
- Helispot
- WX Mobile Weather Unit

- R Repeater
- Road Guard
- Uncontrolled Fire Edge
- Feller/Buncher
- Cold Edge
- Masticator
- Completed Dozer Line
- Hand Line
- Road as Completed Line

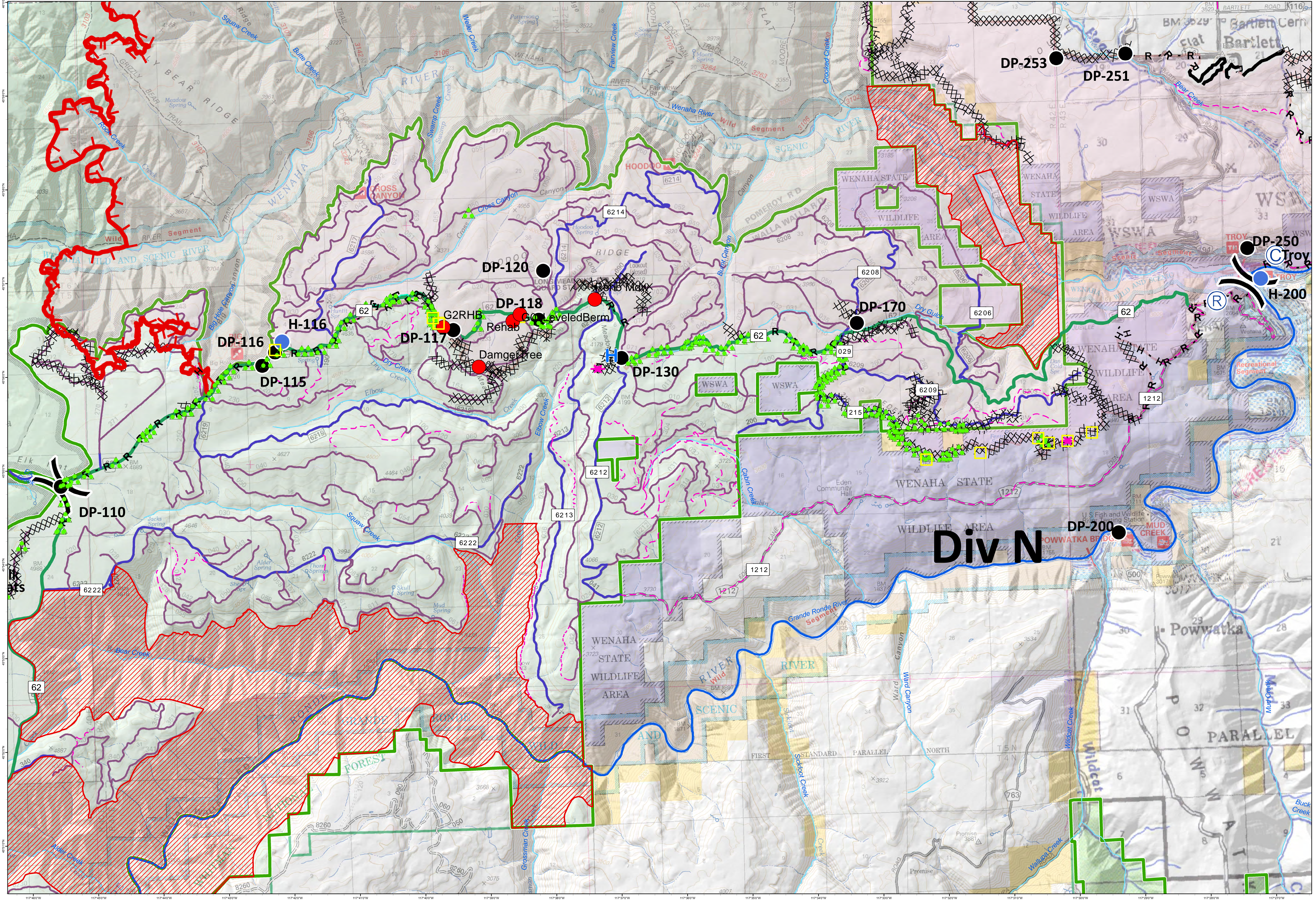
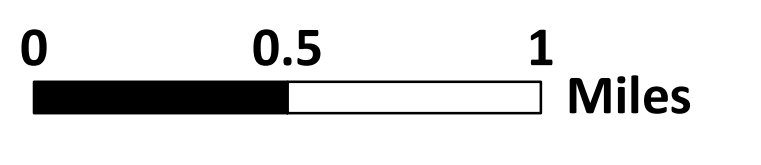
- Rehab_points**

 - * Fence
 - H HandLine
 - ▲ LogDeck
 - DozerClearing
 - MiscRehab

NorthUmaRoadsGI082015

 - Unknown
 - 1 - BASIC CUSTODIAL CARE (CLOSED)
 - 2 - HIGH CLEARANCE VEHICLES

- 3 - SUITABLE FOR PASSENGER CARS
 - 4 - MODERATE DEGREE OF USER COMFORT
 - 5 - HIGH DEGREE OF USER COMFORT
 - Inventoried Roadless Areas



Div N