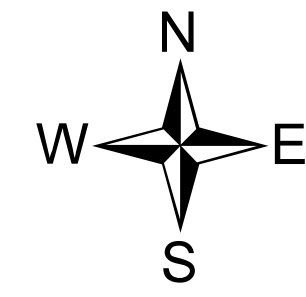


Grizzly Bear Complex

OR-UMF-000947

REHAB: DIV N
Sept. 7, 2015
GIS Acres: 75,269



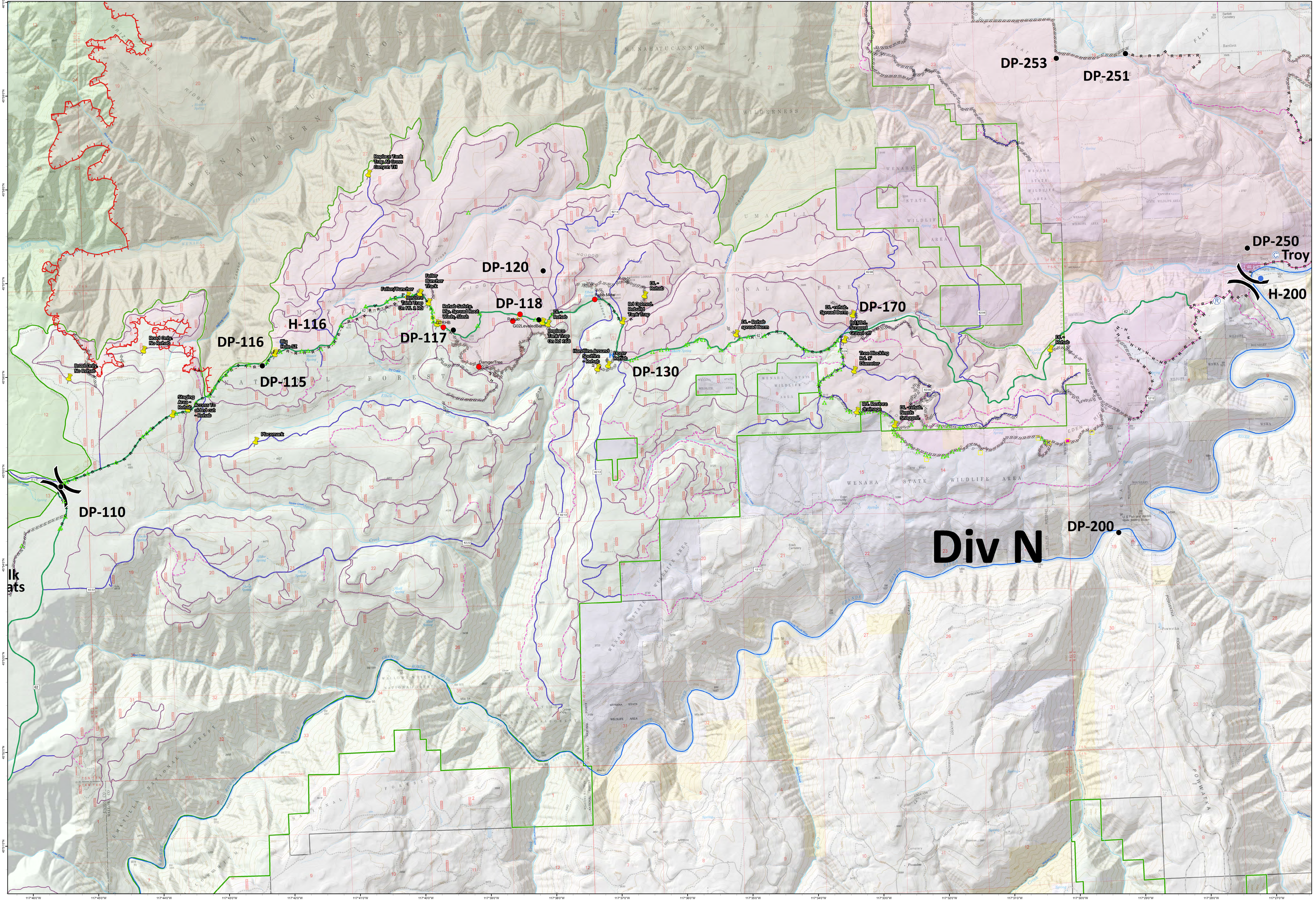
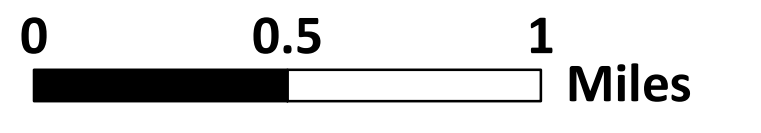
- Drop Point
- Helispot
- WX
- Mobile Weather Unit
- Repeater

- Uncontrolled Fire Edge
- Feller/Buncher
- Cold Edge
- Masticator
- Completed Dozer Line
- Hand Line
- Road as Completed Line

- Rehab_points**
- Fence
 - HandLine
 - LogDeck
 - DozerClearing
 - MiscRehab

- NorthUmaRoadsGI082015**
- Unknown
 - 1 - BASIC CUSTODIAL CARE (CLOSED)
 - 2 - HIGH CLEARANCE VEHICLES

- 3 - SUITABLE FOR PASSENGER CARS
- 4 - MODERATE DEGREE OF USER COMFORT
- 5 - HIGH DEGREE OF USER COMFORT
- Wilderness



alkats

117°40'W 117°35'W 117°30'W 117°25'W 117°20'W 117°15'W 117°10'W 117°05'W 117°00'W 116°55'W 116°50'W 116°45'W 116°40'W 116°35'W 116°30'W 116°25'W 116°20'W 116°15'W 116°10'W 116°05'W 116°00'W