





# Grizzly Bear Complex

OR-UMF-000947

IAP Tile: DIV N

Sept. 10, 2015

GIS Acres: 75,565

- Drop Point
- Helispot
- WX Mobile Weather Unit

Ⓡ Repeater

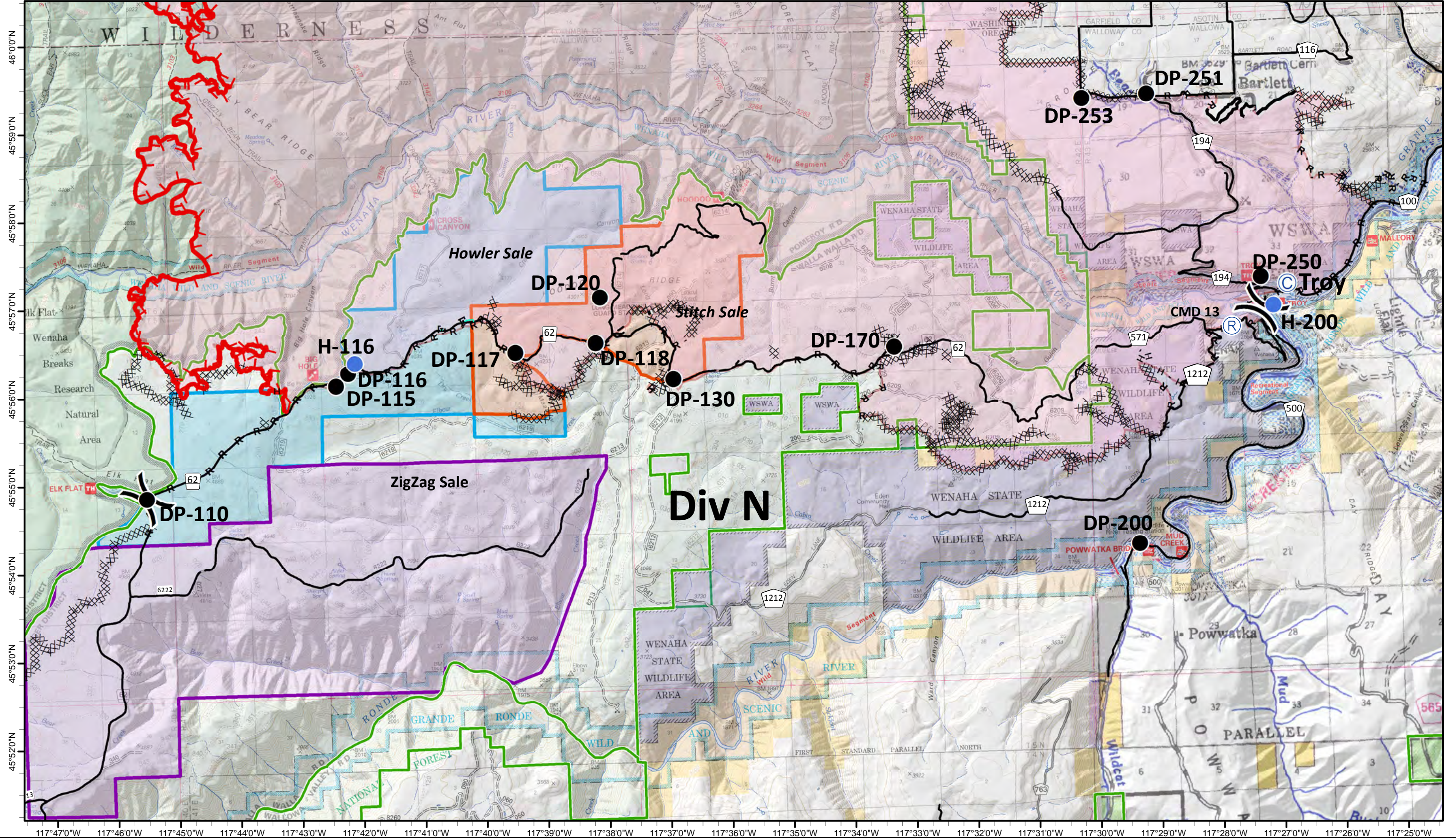
- Uncontrolled Fire Edge
- F—F Feller/Buncher
- Cold Edge
- M—M Masticator

- XXXXX Completed Dozer Line
- H - H - Hand Line
- R - R - Road as Completed Line

- Stitch Sale Area Boundary
- ZigZag Sale Area Boundary
- Howler Sale Area Boundary
- Upper Mill Creek Municipal Watershed
- Columbia Complex 2006



0 1 2 Miles









# Grizzly Bear Complex

OR-UMF-000947

IAP Tile: DIV W/Y (East)

Sept. 10, 2015

GIS Acres: 75,565

- Drop Point
- Helispot
- WX Mobile Weather Unit

Ⓡ Repeater

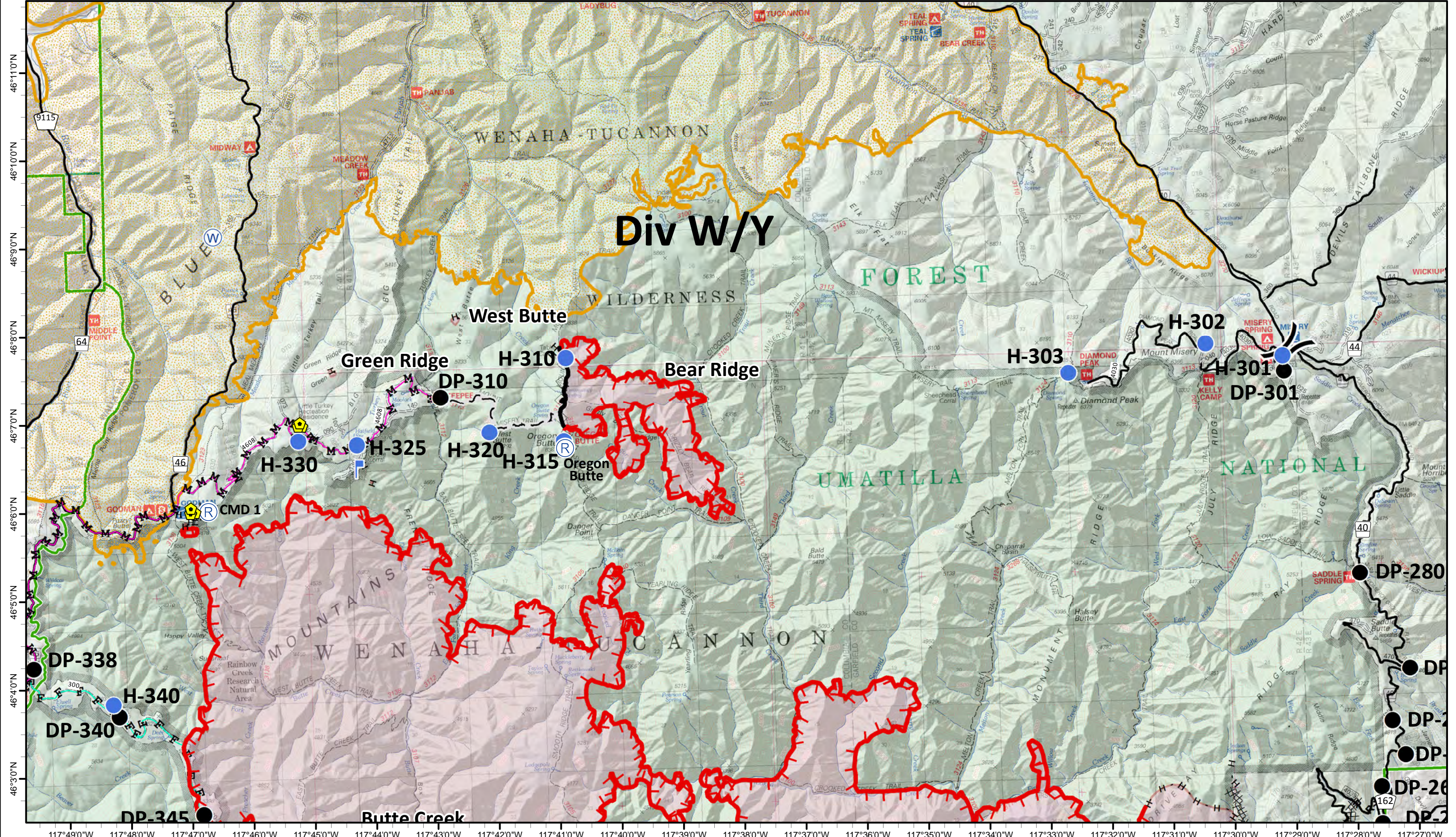
- ▬ Uncontrolled Fire Edge
- F-F Feller/Buncher
- ▬ Cold Edge
- M-M Masticator

- XXXXXX Completed Dozer Line
- H - H - Hand Line
- R - R - Road as Completed Line

- ▭ Stitch Sale Area Boundary
- ▭ ZigZag Sale Area Boundary
- ▭ Howler Sale Area Boundary
- ▭ Upper Mill Creek Municipal Watershed
- ▭ Columbia Complex 2006



0 1 2 Miles





# Grizzly Bear Complex

OR-UMF-000947

IAP Tile: DIV W/Y (West)

Sept. 10, 2015

GIS Acres: 75,565

- Drop Point
- Helispot
- WX Mobile Weather Unit

Ⓡ Repeater

- Uncontrolled Fire Edge
- F-F Feller/Buncher
- Cold Edge
- M-M Masticator

- Completed Dozer Line
- H - H - Hand Line
- R - R - Road as Completed Line

- Stitch Sale Area Boundary
- ZigZag Sale Area Boundary
- Howler Sale Area Boundary
- Upper Mill Creek Municipal Watershed
- Columbia Complex 2006



0 1 2 Miles

