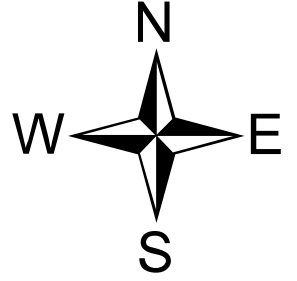


# Grizzly Bear Complex

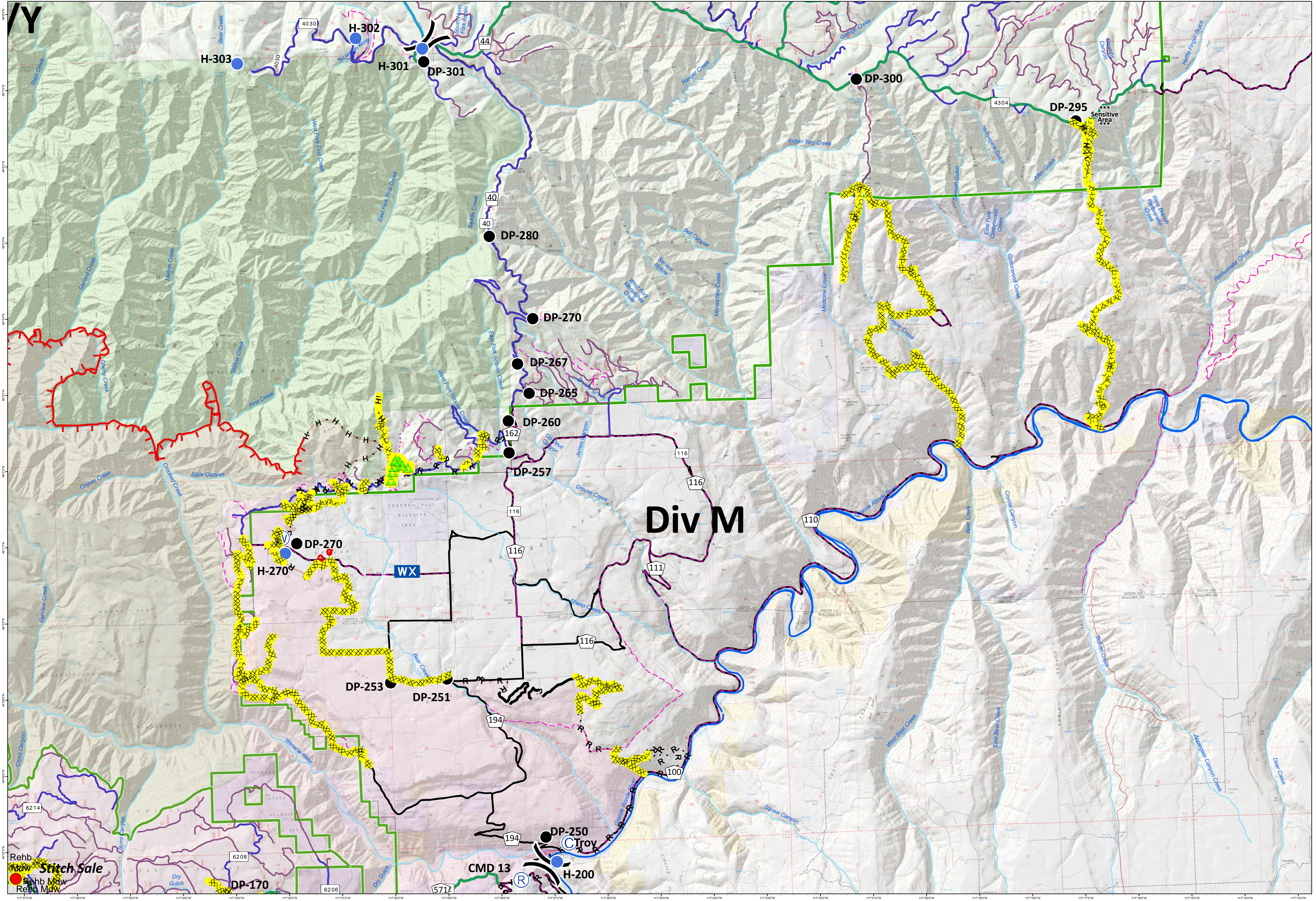
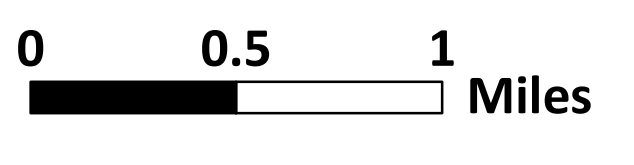
OR-UMF-000947

## REHAB: DIV M

Sept.10, 2015  
GIS Acres: 75,565



- |                        |                        |                      |                 |                                   |                                     |
|------------------------|------------------------|----------------------|-----------------|-----------------------------------|-------------------------------------|
| ● Drop Point           | Uncontrolled Fire Edge | Rehab Progress       | Rehab_points    | NorthUmaRoadsGI082015             | 3 - SUITABLE FOR PASSENGER CARS     |
| ● Helispot             | Feller/Buncher         | Needs Work           | ✦ Fence         | Unknown                           | 4 - MODERATE DEGREE OF USER COMFORT |
| WX Mobile Weather Unit | Cold Edge              | Ready for READ Check | H HandLine      | 1 - BASIC CUSTODIAL CARE (CLOSED) | 5 - HIGH DEGREE OF USER COMFORT     |
| Ⓡ Repeater             | Masticator             | Meets Requirements   | ▲ LogDeck       | 2 - HIGH CLEARANCE VEHICLES       |                                     |
|                        | Completed Dozer Line   |                      | □ DozerClearing |                                   |                                     |
|                        | Hand Line              |                      | ● MiscRehab     |                                   |                                     |
|                        | Road as Completed Line |                      |                 |                                   |                                     |



Reh Mow  
Stitch Sale  
Reh Mow  
Reh Mow

CMD 13  
Ⓡ