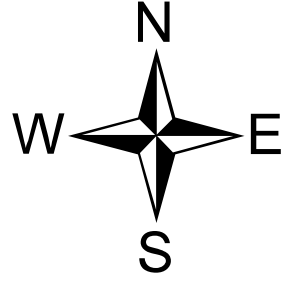


Grizzly Bear Complex

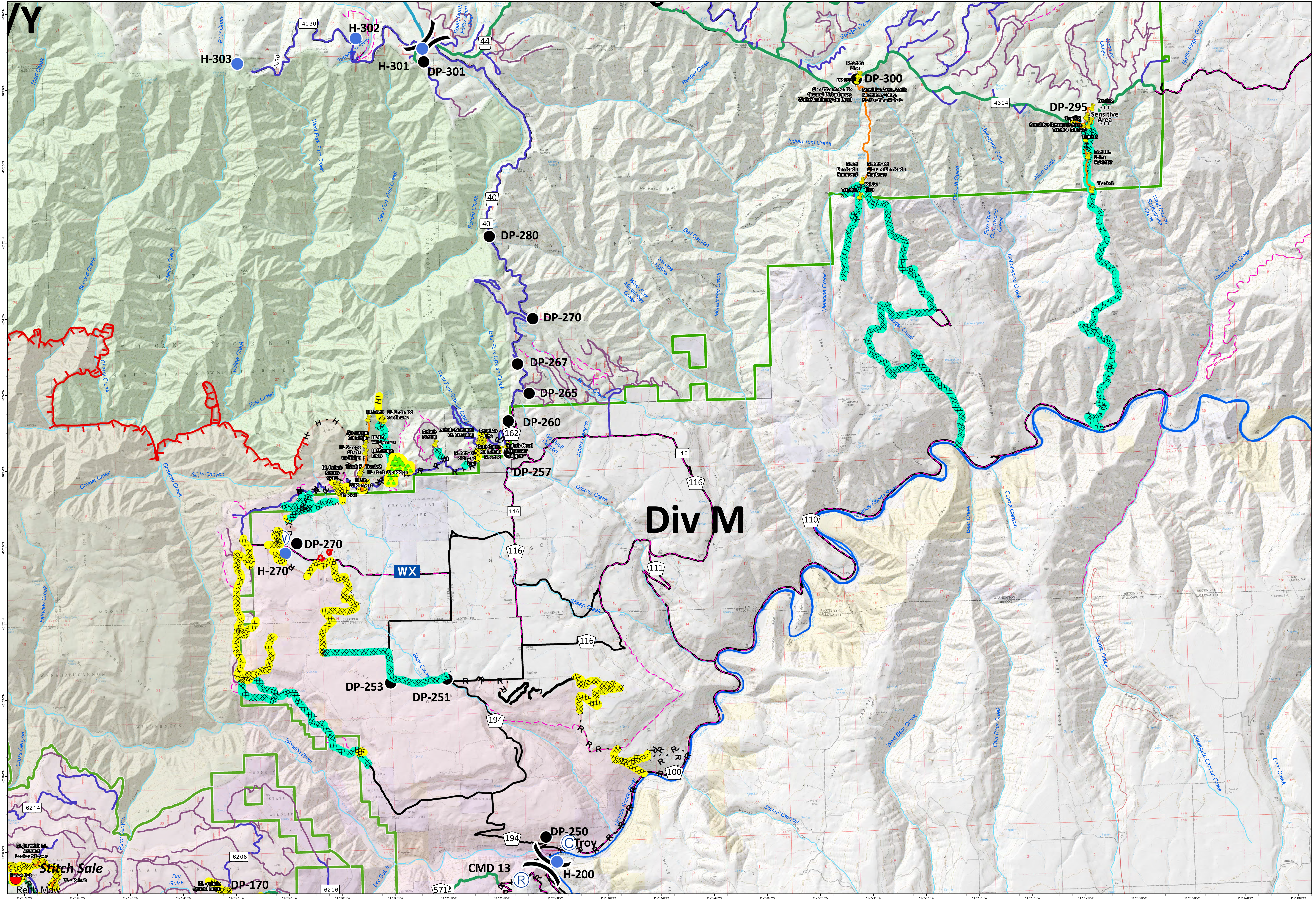
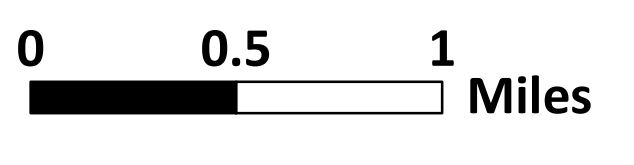
OR-UMF-000947

REHAB: DIV M

Sept. 12, 2015
IR Acres: 75,634



- | | | | | | |
|------------------------|------------------------------|----------------------|-----------------|---|-------------------------------------|
| ● Drop Point | Uncontrolled Fire Edge | Rehab Progress | Rehab Points | Road Surface | 3 - SUITABLE FOR PASSENGER CARS |
| ● Helispot | ----- Feller/Buncher | Needs Work | ✦ Fence | ----- Unknown | 4 - MODERATE DEGREE OF USER COMFORT |
| WX Mobile Weather Unit | ----- Cold Edge | Ready for READ Check | H HandLine | ----- 1 - BASIC CUSTODIAL CARE (CLOSED) | 5 - HIGH DEGREE OF USER COMFORT |
| Ⓡ Repeater | ----- Masticator | Meets Requirements | ⬢ DozerClearing | ----- 2 - HIGH CLEARANCE VEHICLES | |
| | ----- Completed Dozer Line | | ● MiscRehab | | |
| | ----- Hand Line | | | | |
| | ----- Road as Completed Line | | | | |



Stitch Sale
Rehab Mdw

117°30'W 117°25'W 117°20'W 117°15'W 117°10'W 117°05'W 117°00'W 116°55'W 116°50'W 116°45'W 116°40'W 116°35'W 116°30'W 116°25'W 116°20'W 116°15'W 116°10'W 116°05'W 116°00'W