

Grizzly Bear Complex

OR-UMF-000947

IAP Tile: DIV M

Sept. 13, 2015

IR Acres: 75,634 20150910 2134

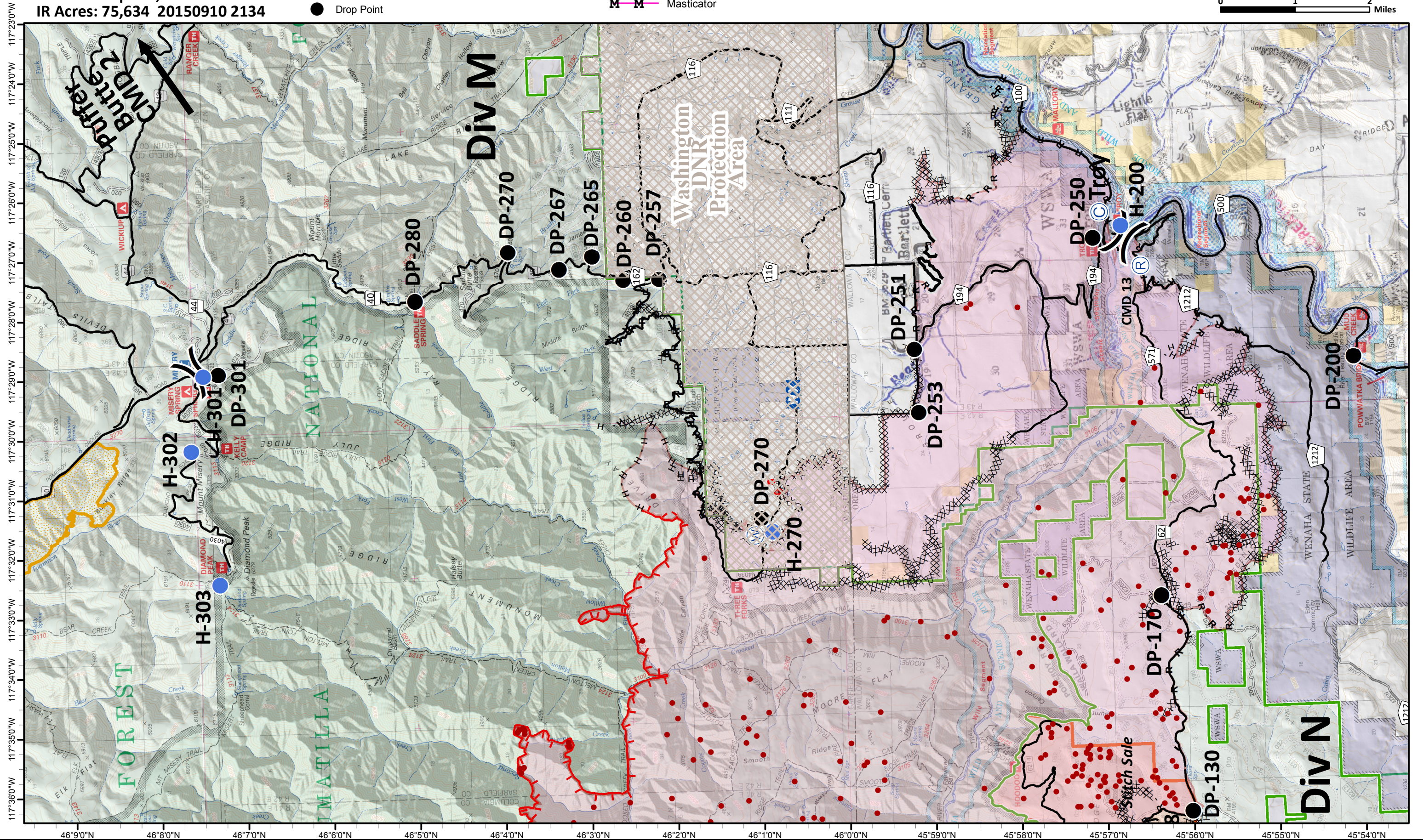
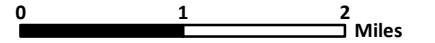
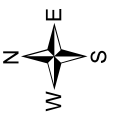
- Isolated Heat
- Ⓡ Repeaters
- Ⓒ Camp
- Drop Point

- Helispot
- WX Mobile Weather Unit
- Ⓜ Water Source

- Uncontrolled Fire Edge
- F—F Feller/Buncher
- Cold Edge
- M—M Masticator

- XXXXX Completed Dozer Line
- H - H - Hand Line
- R - R - Road as Completed Line

- Washington DNR Protection Area
- Columbia Complex 2006
- Upper Mill Creek Municipal Watershed



Grizzly Bear Complex

OR-UMF-000947

IAP Tile: DIV R

Sept. 13, 2015

IR Acres: 75,634 20150910 2134

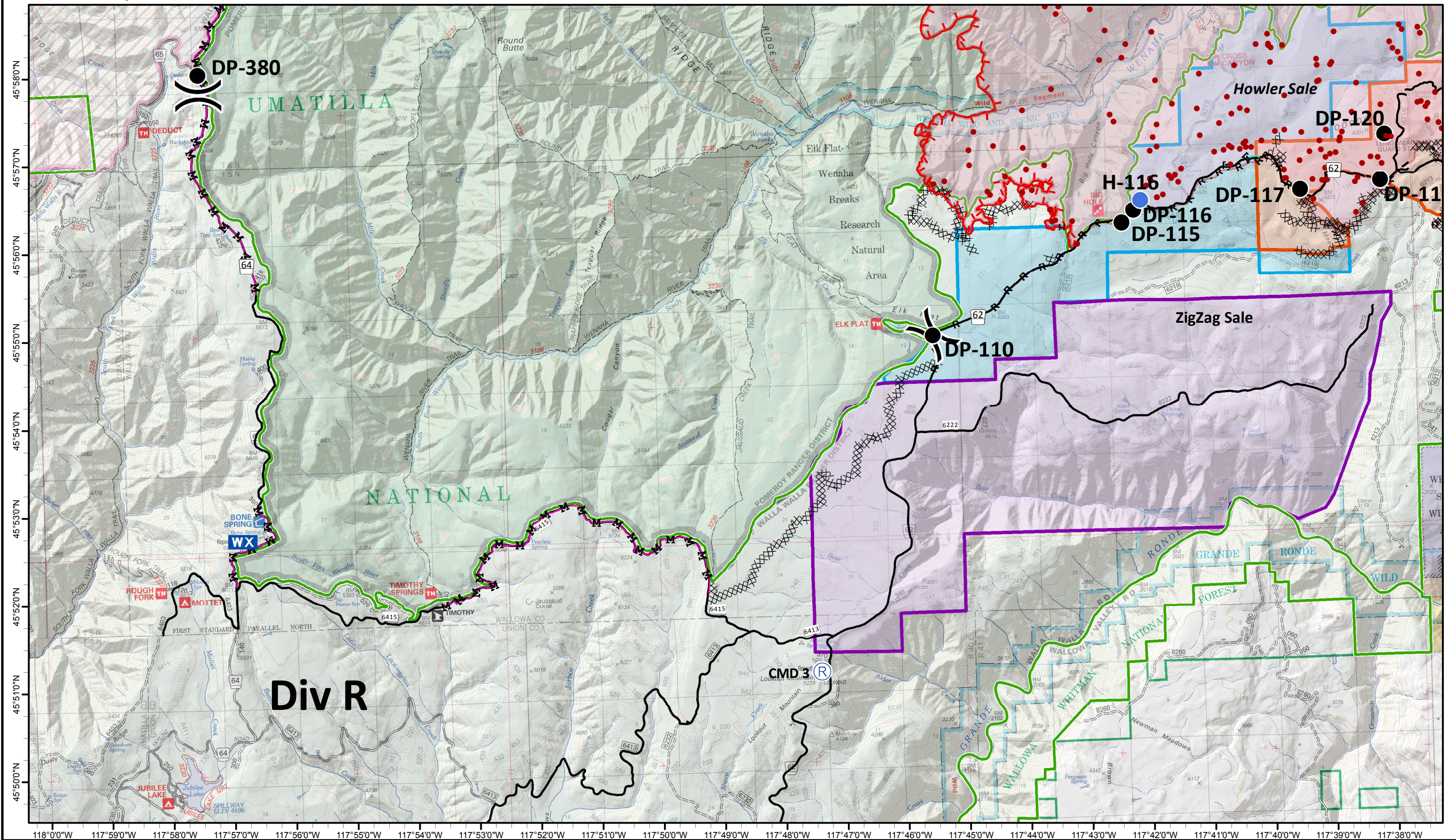
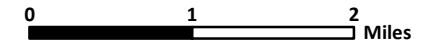
- Isolated Heat
- Ⓡ Repeaters
- Ⓢ Camp
- Drop Point

- Helispot
- WX Mobile Weather Unit
- W Water Source

- Uncontrolled Fire Edge
- F-F Feller/Buncher
- Cold Edge
- M-M Masticator

- Completed Dozer Line
- H - H - Hand Line
- R - R - Road as Completed Line

- Washington DNR Protection Area
- Columbia Complex 2006
- Upper Mill Creek Municipal Watershed



Grizzly Bear Complex

OR-UMF-000947

IAP Tile: DIV W/Y (East)

Sept. 13, 2015

IR Acres: 75,634 20150910 2134

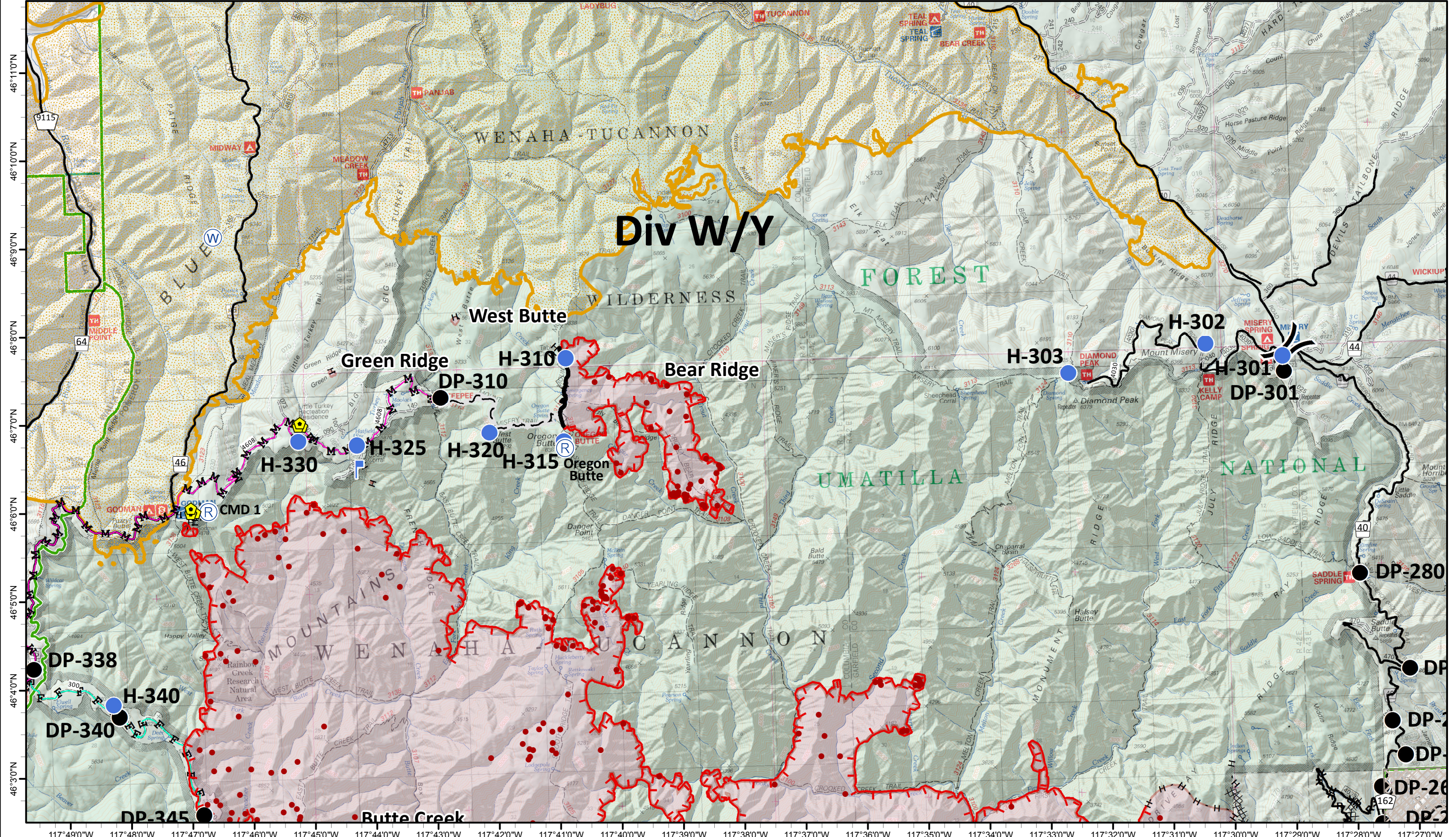
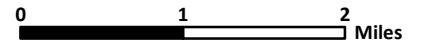
- Isolated Heat
- Ⓡ Repeaters
- Ⓢ Camp
- Drop Point

- Helispot
- WX Mobile Weather Unit
- W Water Source

- Uncontrolled Fire Edge
- F-F Feller/Buncher
- Cold Edge
- M-M Masticator

- Completed Dozer Line
- H - H - Hand Line
- R - R - Road as Completed Line

- Washington DNR Protection Area
- Columbia Complex 2006
- Upper Mill Creek Municipal Watershed



Grizzly Bear Complex

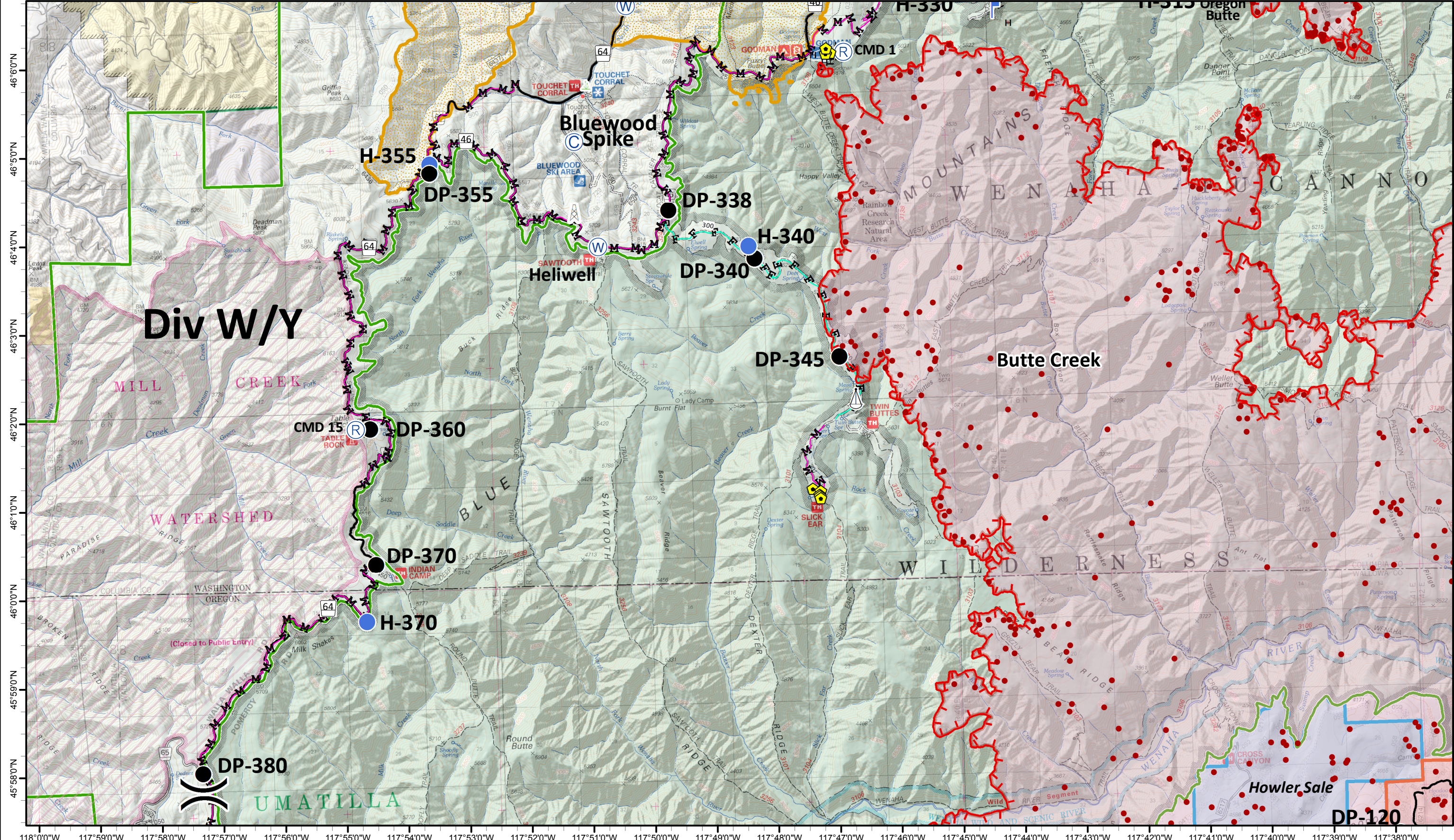
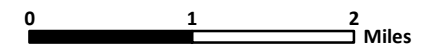
OR-UMF-000947

IAP Tile: DIV W/Y (West)

Sept. 13, 2015

IR Acres: 75,634 20150910 2134

- Isolated Heat
- Helispot
- ⊠ Repeater
- ⊠ Mobile Weather Unit
- ⊠ Camp
- ⊠ Water Source
- Drop Point
- Uncontrolled Fire Edge
- Feller/Buncher
- Cold Edge
- Masticator
- ⊠ Completed Dozer Line
- H - H - Hand Line
- R - R - Road as Completed Line
- ⊠ Washington DNR Protection Area
- ⊠ Columbia Complex 2006
- ⊠ Upper Mill Creek Municipal Watershed



Div W/Y

WATERSHED

UMATILLA

Bluewood Spike

Heliwell

Butte Creek

Howler Sale

DP-120