

# Grizzly Bear Complex

OR-UMF-000947

IAP Tile: DIV M

Sept. 13, 2015

IR Acres: 75,634 20150910 2134

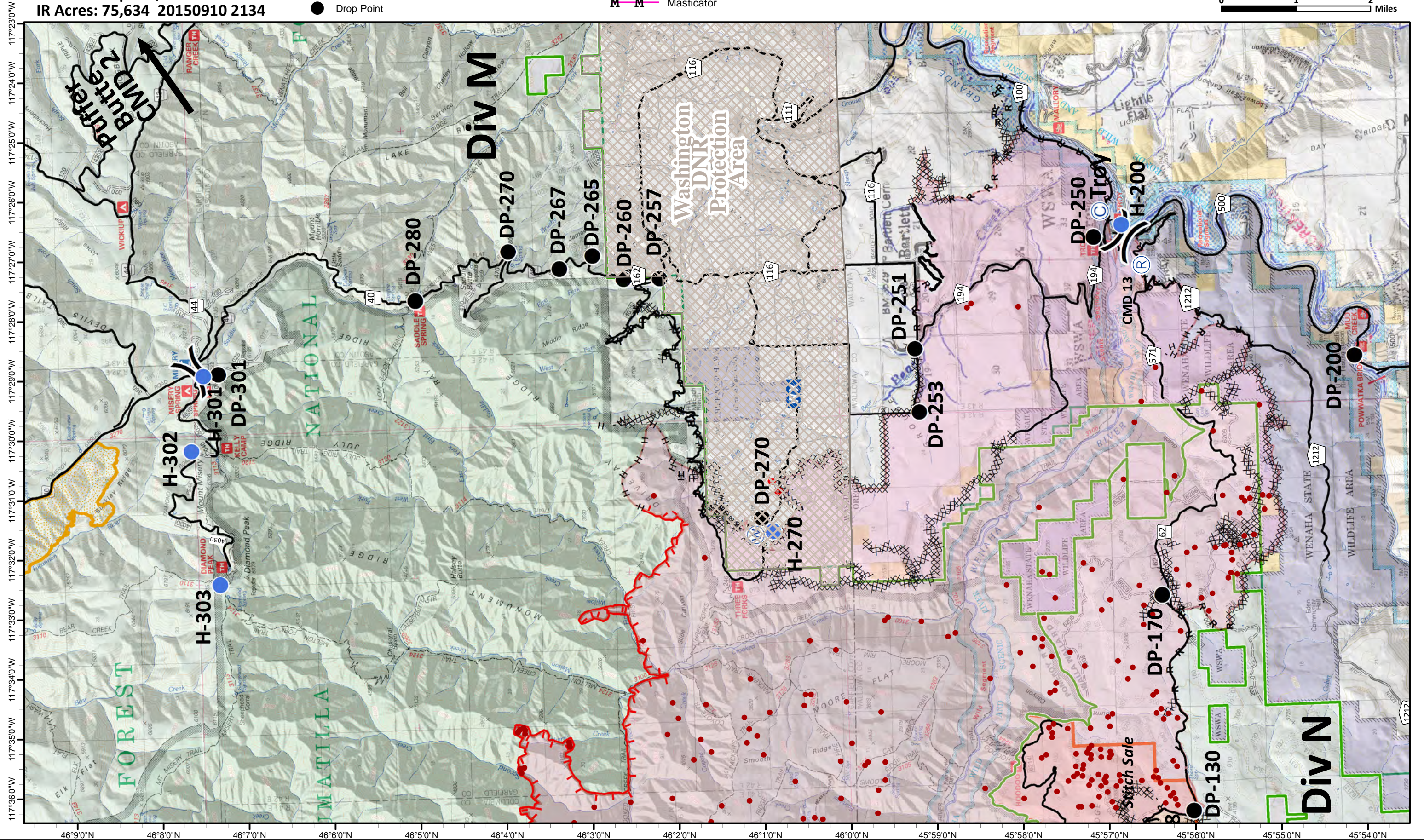
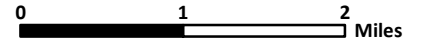
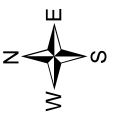
- Isolated Heat
- Ⓡ Repeaters
- Ⓒ Camp
- Drop Point

- Helispot
- WX Mobile Weather Unit
- W Water Source

- Uncontrolled Fire Edge
- F-F Feller/Buncher
- Cold Edge
- M-M Masticator

- XXXXX Completed Dozer Line
- H - H - Hand Line
- R - R - Road as Completed Line

- Washington DNR Protection Area
- Columbia Complex 2006
- Upper Mill Creek Municipal Watershed



# Grizzly Bear Complex

OR-UMF-000947

IAP Tile: DIV N

Sept. 13, 2015

IR Acres: 75,634 20150910 2134

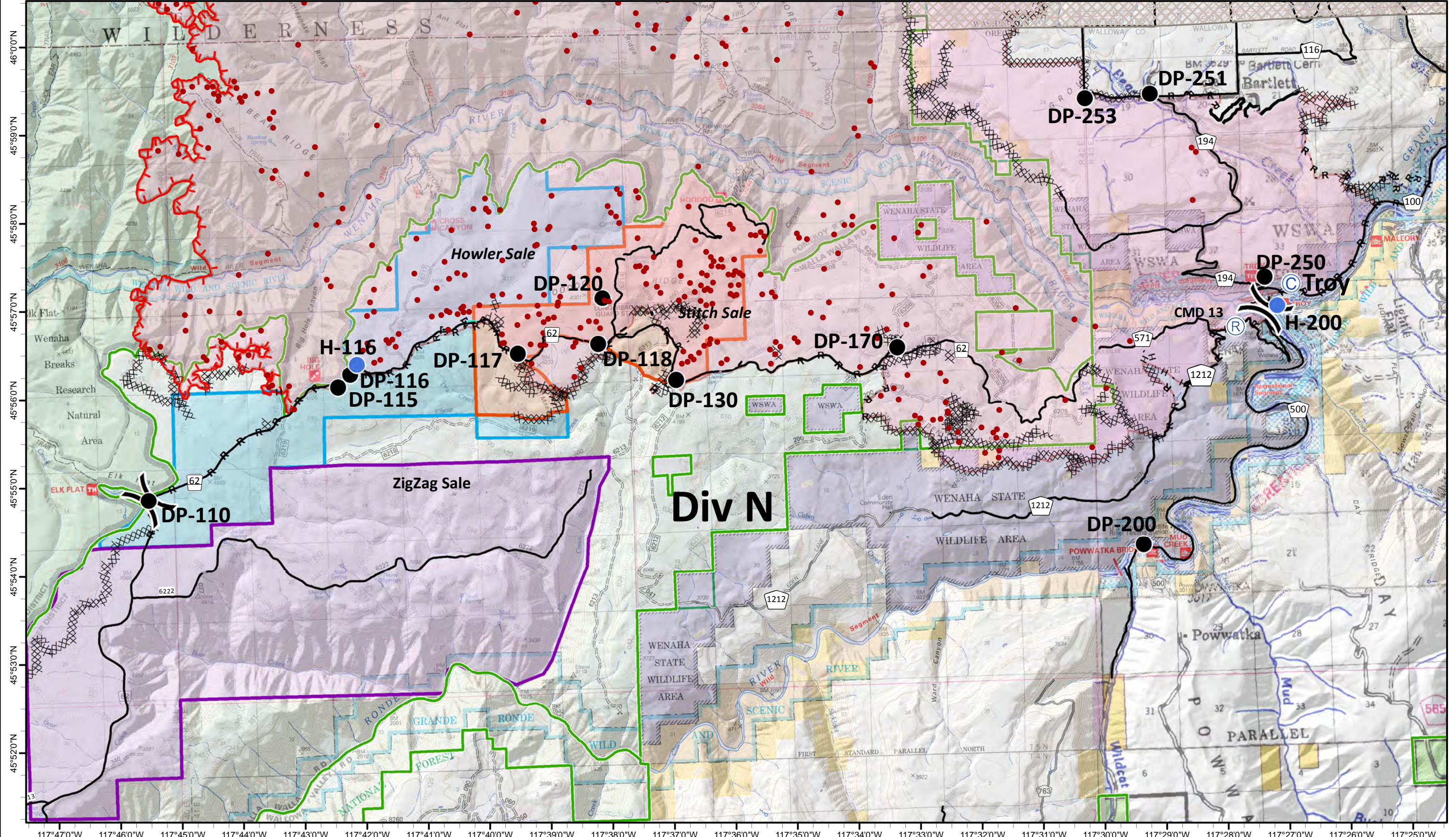
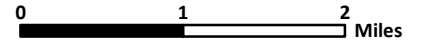
- Isolated Heat
- Ⓡ Repeaters
- Ⓒ Camp
- Drop Point

- Helispot
- WX Mobile Weather Unit
- W Water Source

- Uncontrolled Fire Edge
- F-F Feller/Buncher
- Cold Edge
- M-M Masticator

- XXXXX Completed Dozer Line
- H - H - Hand Line
- R - R - Road as Completed Line

- Washington DNR Protection Area
- Columbia Complex 2006
- Upper Mill Creek Municipal Watershed



# Grizzly Bear Complex

OR-UMF-000947

IAP Tile: DIV R

Sept. 13, 2015

IR Acres: 75,634 20150910 2134

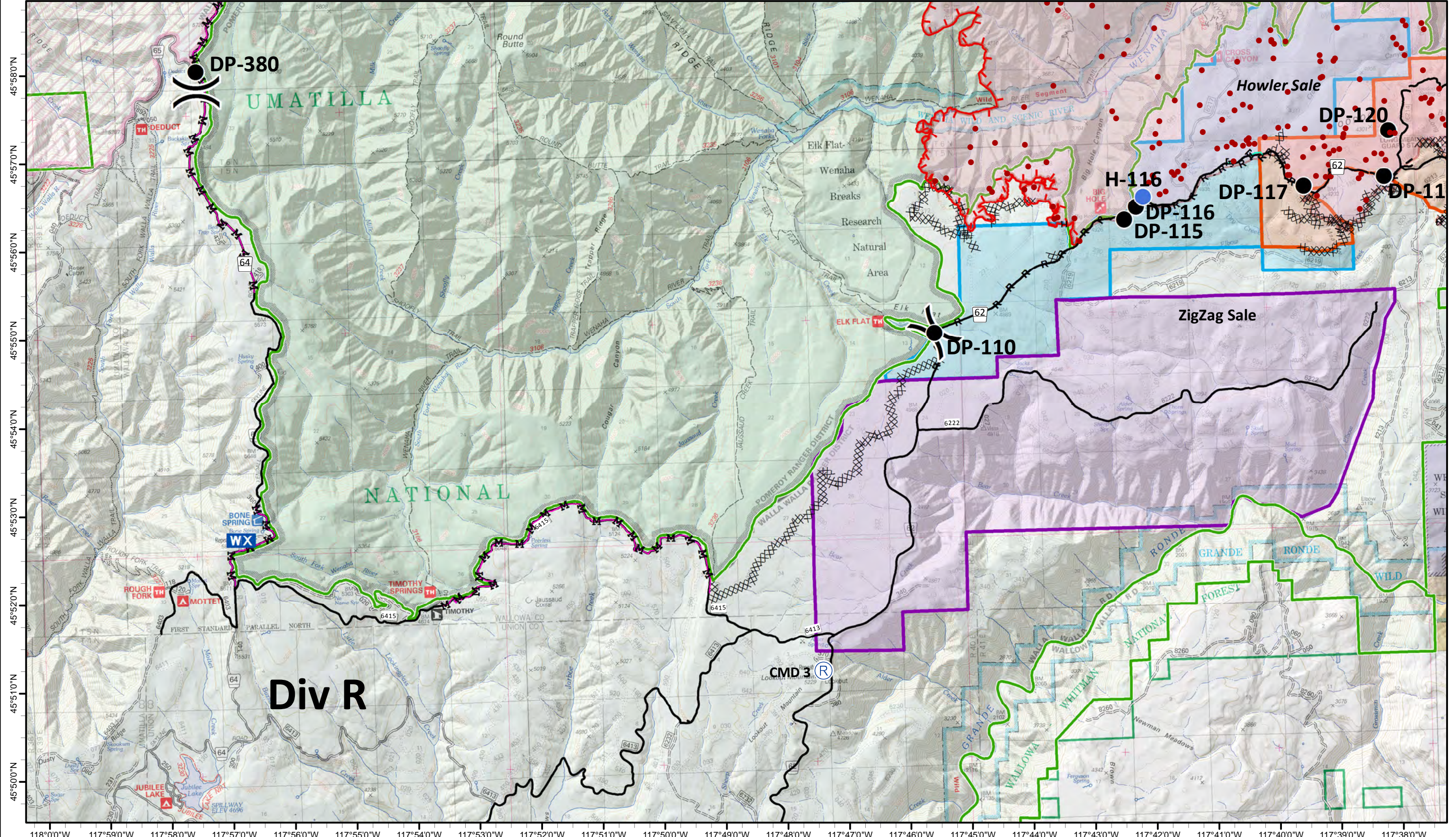
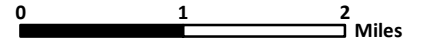
- Isolated Heat
- Ⓡ Repeaters
- Ⓢ Camp
- Drop Point

- Helispot
- WX Mobile Weather Unit
- W Water Source

- Uncontrolled Fire Edge
- F-F Feller/Buncher
- Cold Edge
- M-M Masticator

- Completed Dozer Line
- H - H - Hand Line
- R - R - Road as Completed Line

- Washington DNR Protection Area
- Columbia Complex 2006
- Upper Mill Creek Municipal Watershed



## Div R

CMD 3 Ⓡ

# Grizzly Bear Complex

OR-UMF-000947

IAP Tile: DIV W/Y (East)

Sept. 13, 2015

IR Acres: 75,634 20150910 2134

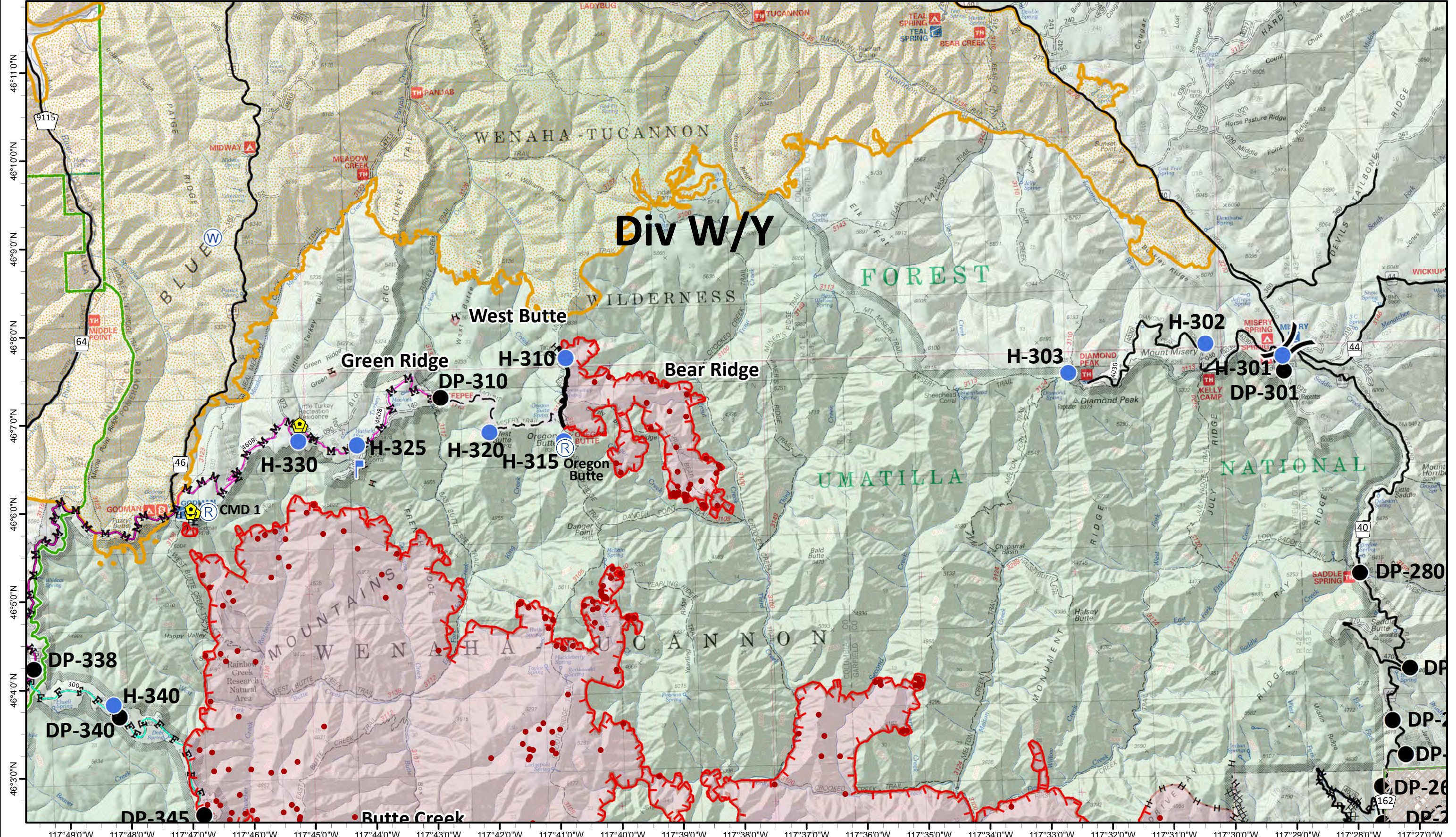
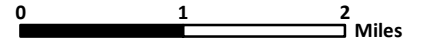
- Isolated Heat
- Ⓡ Repeaters
- Ⓢ Camp
- Drop Point

- Helispot
- WX Mobile Weather Unit
- W Water Source

- Uncontrolled Fire Edge
- F-F Feller/Buncher
- Cold Edge
- M-M Masticator

- Completed Dozer Line
- H - H - Hand Line
- R - R - Road as Completed Line

- Washington DNR Protection Area
- Columbia Complex 2006
- Upper Mill Creek Municipal Watershed



# Grizzly Bear Complex

OR-UMF-000947

IAP Tile: DIV W/Y (West)

Sept. 13, 2015

IR Acres: 75,634 20150910 2134

- Isolated Heat
- Helispot
- ☒ Repeater
- ☒ Camp
- Drop Point
- ☒ Mobile Weather Unit
- ☒ Water Source
- ☒ Uncontrolled Fire Edge
- ☒ Feller/Buncher
- ☒ Cold Edge
- ☒ Masticator
- ☒ Completed Dozer Line
- H - H - Hand Line
- R - R - Road as Completed Line
- ☒ Washington DNR Protection Area
- ☒ Columbia Complex 2006
- ☒ Upper Mill Creek Municipal Watershed

