

# Grizzly Bear Complex

OR-UMF-000947

IAP Tile: DIV M

Sept. 15, 2015

IR Acres: 77,193 20150913 2235

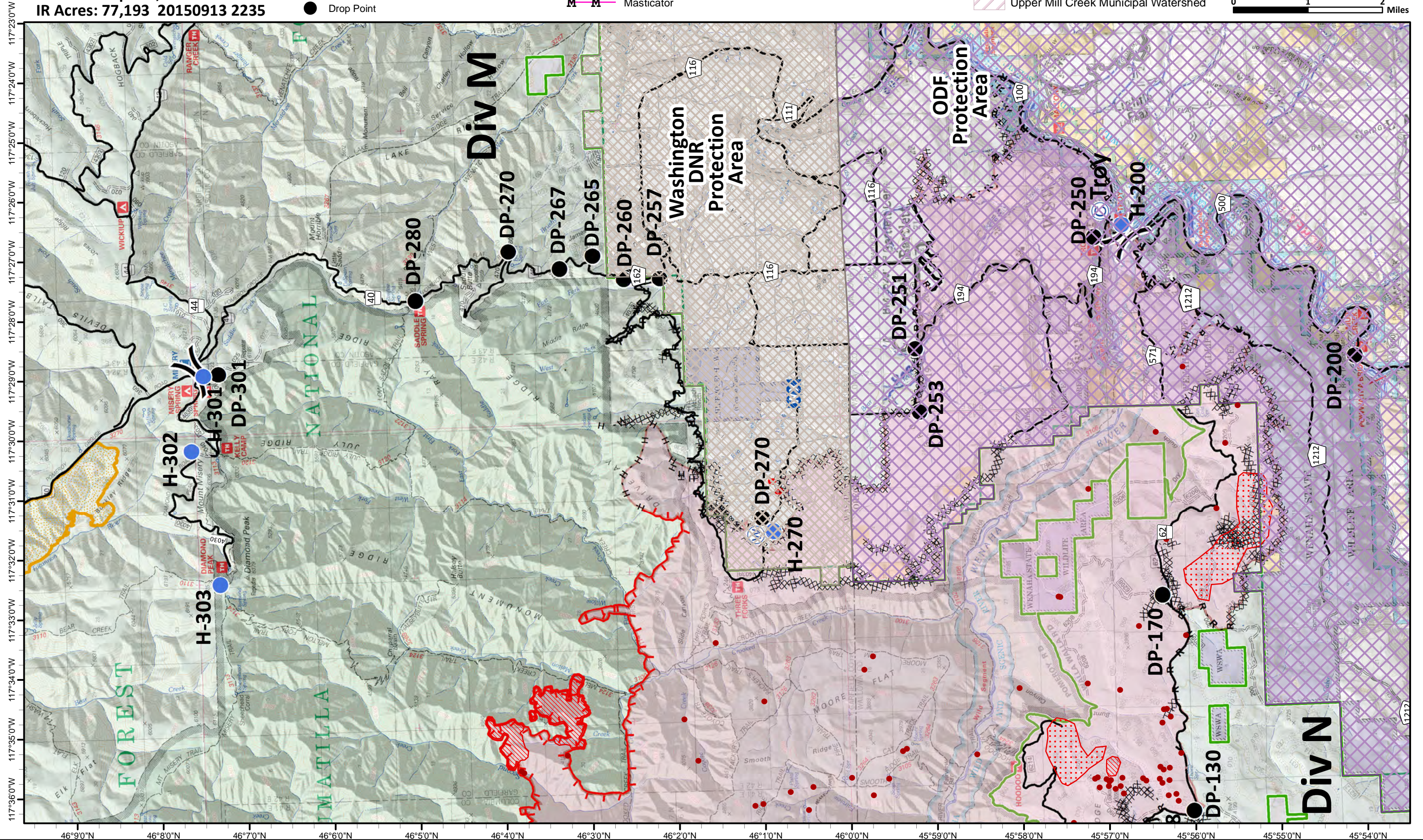
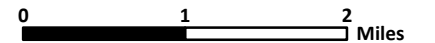
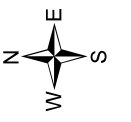
- Isolated Heat
- Ⓡ Repeaters
- Ⓒ Camp
- Drop Point

- Helispot
- WX Mobile Weather Unit
- W Water Source

- Uncontrolled Fire Edge
- F-F Feller/Buncher
- Cold Edge
- M-M Masticator

- XXXXXX Completed Dozer Line
- H - H - Hand Line
- R - R - Road as Completed Line

- Washington DNR Protection Area
- ODF Protection Area
- Columbia Complex 2006
- Upper Mill Creek Municipal Watershed





# Grizzly Bear Complex

OR-UMF-000947

IAP Tile: DIV N

Sept. 15, 2015

IR Acres: 77,193 20150913 2235

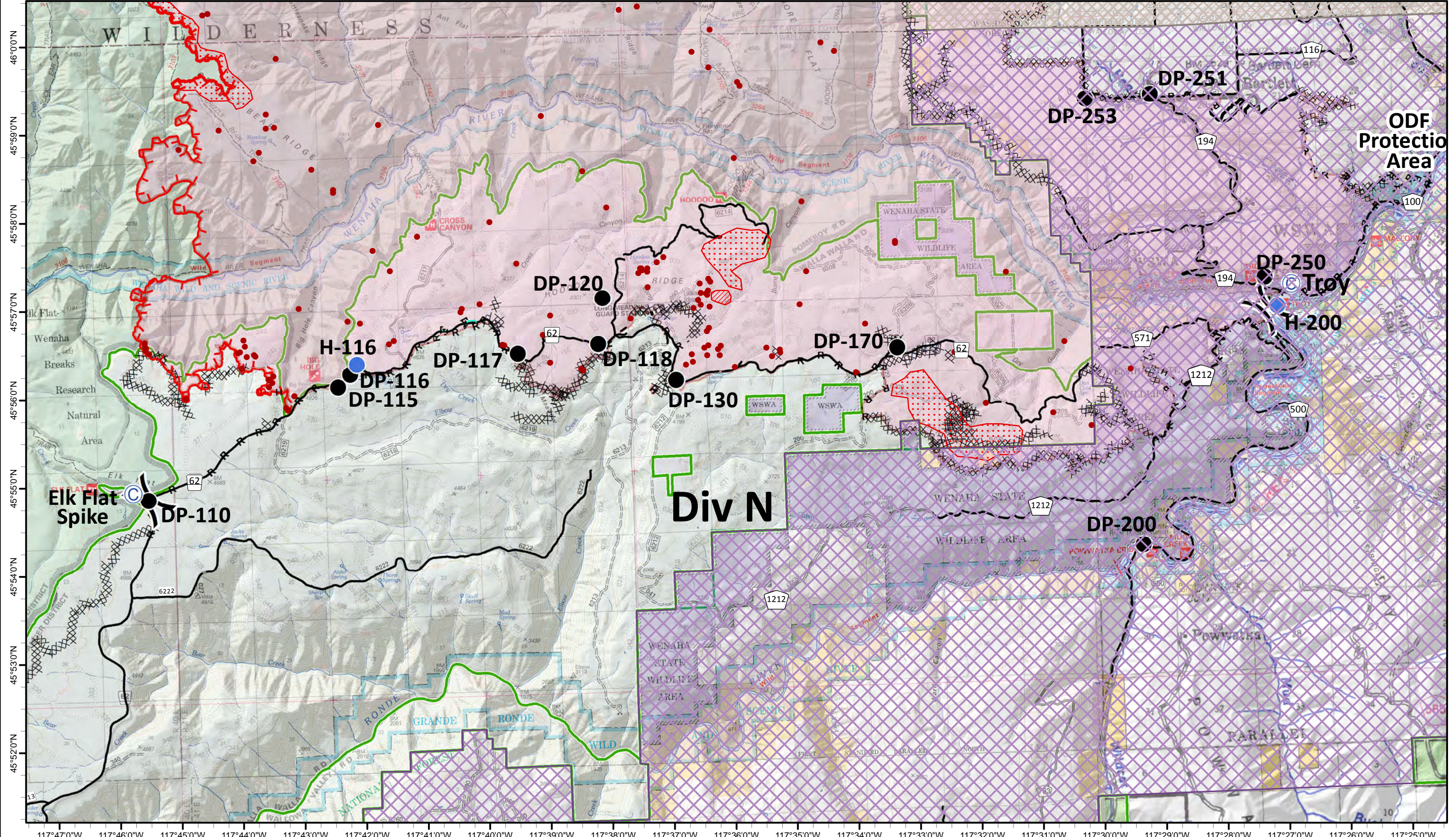
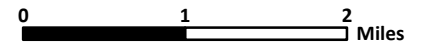
- Isolated Heat
- Ⓡ Repeaters
- Ⓒ Camp
- Drop Point

- Helispot
- WX Mobile Weather Unit
- W Water Source

- Uncontrolled Fire Edge
- F-F Feller/Buncher
- Cold Edge
- M-M Masticator

- Completed Dozer Line
- H - H - Hand Line
- R - R - Road as Completed Line

- Washington DNR Protection Area
- ODF Protection Area
- Columbia Complex 2006
- Upper Mill Creek Municipal Watershed



Div N

ODF Protection Area

Elk Flat Spike

DP-251

DP-253

DP-250

H-200

DP-120

DP-170

DP-200

DP-116

DP-115

DP-117

DP-118

DP-130

DP-110



# Grizzly Bear Complex

OR-UMF-000947

IAP Tile: DIV R

Sept. 15, 2015

IR Acres: 77,193 20150913 2235

● Isolated Heat

Ⓡ Repeaters

Ⓒ Camp

● Drop Point

● Helispot

WX Mobile Weather Unit

W Water Source

Uncontrolled Fire Edge

F F Feller/Buncher

— Cold Edge

M M Masticator

Completed Dozer Line

H - H - Hand Line

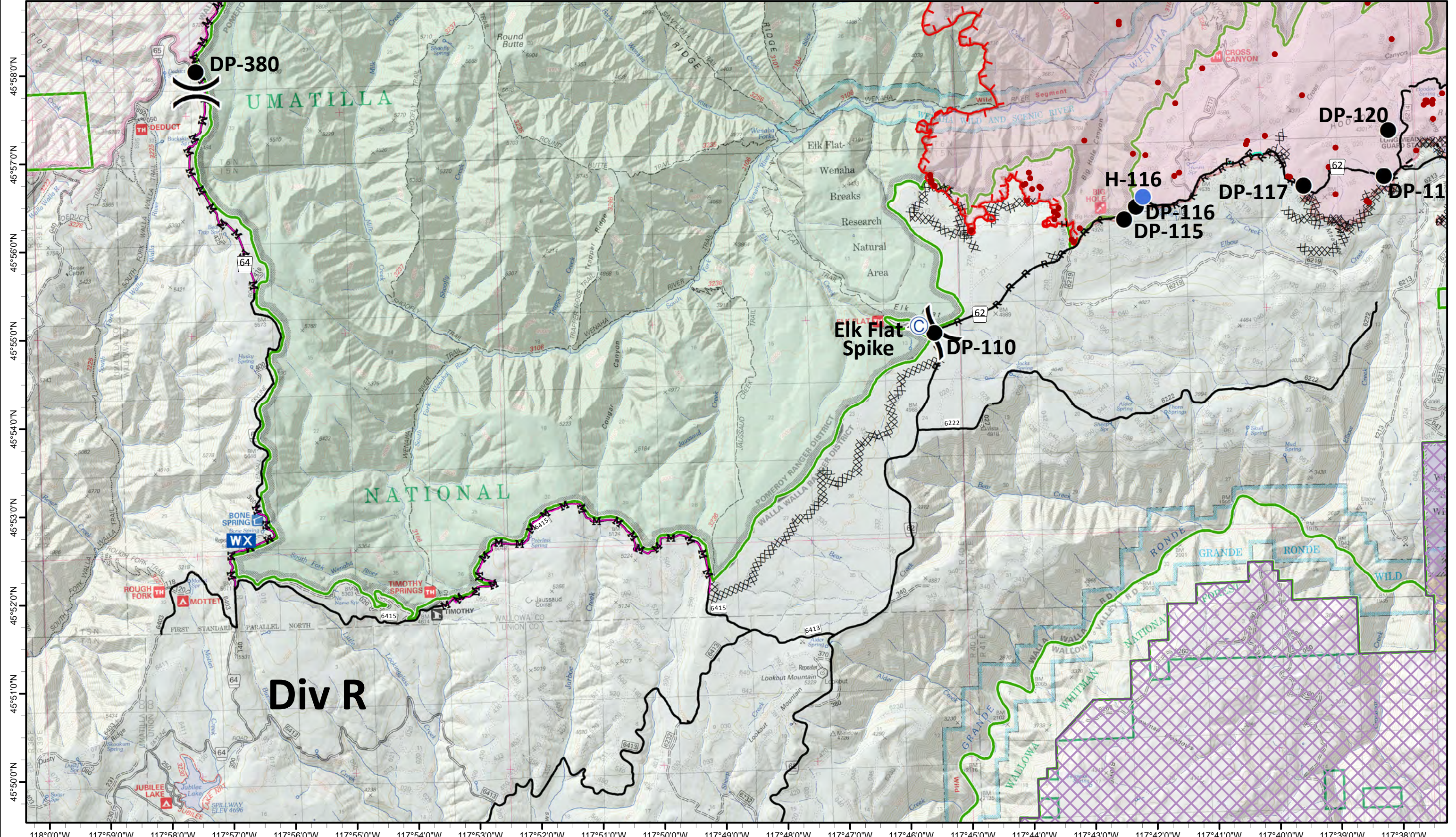
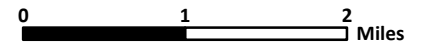
R - R - Road as Completed Line

Washington DNR Protection Area

ODF Protection Area

Columbia Complex 2006

Upper Mill Creek Municipal Watershed



118°00'W 117°59'W 117°58'W 117°57'W 117°56'W 117°55'W 117°54'W 117°53'W 117°52'W 117°51'W 117°50'W 117°49'W 117°48'W 117°47'W 117°46'W 117°45'W 117°44'W 117°43'W 117°42'W 117°41'W 117°40'W 117°39'W 117°38'W



# Grizzly Bear Complex

OR-UMF-000947

IAP Tile: DIV W/Y (East)

Sept. 15, 2015

IR Acres: 77,193 20150913 2235

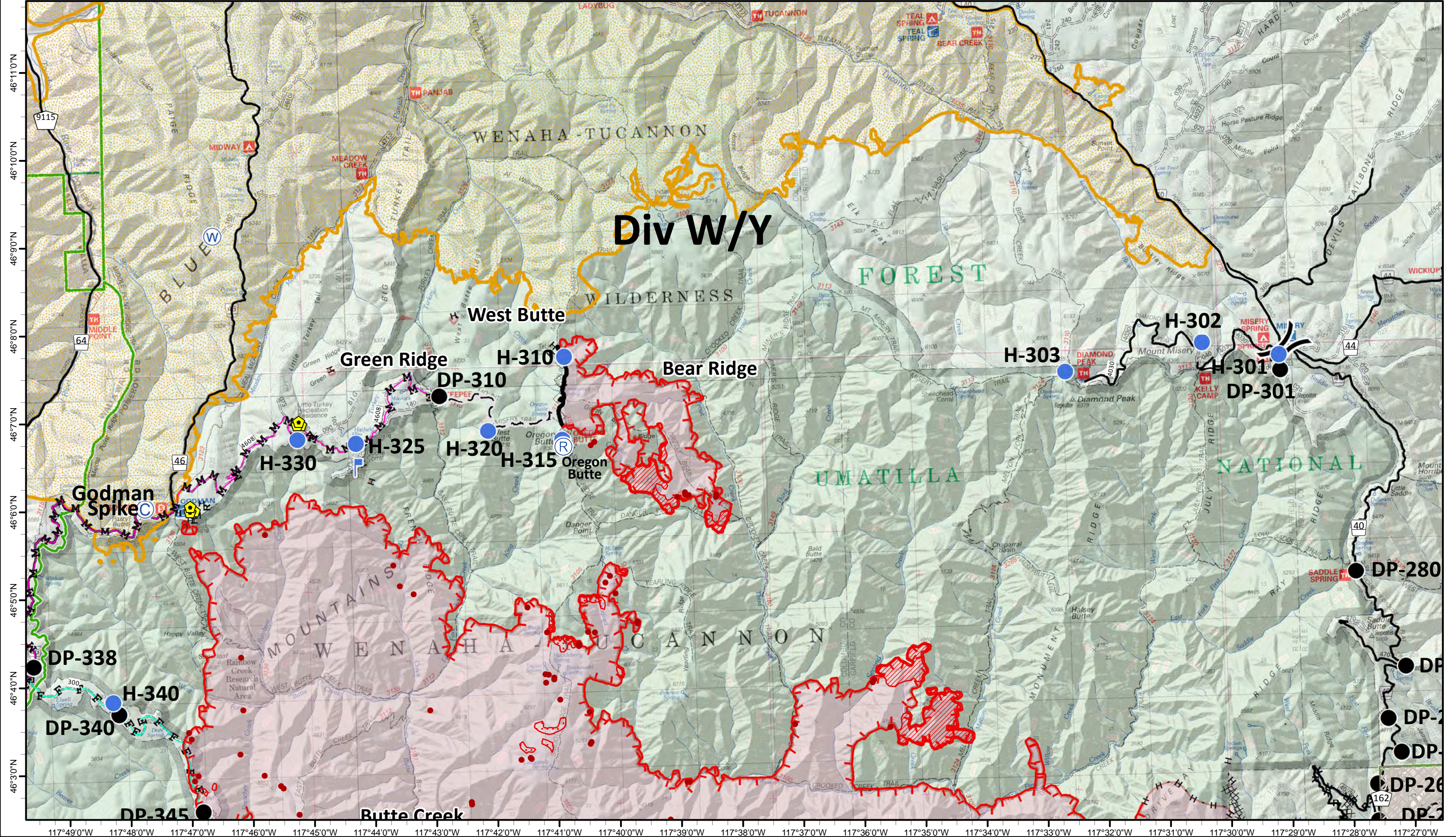
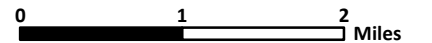
- Isolated Heat
- Ⓡ Repeaters
- Ⓢ Camp
- Drop Point

- Helispot
- WX Mobile Weather Unit
- W Water Source

- Uncontrolled Fire Edge
- F-F Feller/Buncher
- Cold Edge
- M-M Masticator

- Completed Dozer Line
- H - H - Hand Line
- R - R - Road as Completed Line

- Washington DNR Protection Area
- ODF Protection Area
- Columbia Complex 2006
- Upper Mill Creek Municipal Watershed



117°49'0"W 117°48'0"W 117°47'0"W 117°46'0"W 117°45'0"W 117°44'0"W 117°43'0"W 117°42'0"W 117°41'0"W 117°40'0"W 117°39'0"W 117°38'0"W 117°37'0"W 117°36'0"W 117°35'0"W 117°34'0"W 117°33'0"W 117°32'0"W 117°31'0"W 117°30'0"W 117°29'0"W 117°28'0"W 117°27'0"W



# Grizzly Bear Complex

OR-UMF-000947

IAP Tile: DIV W/Y (West)

Sept. 15, 2015

IR Acres: 77,193 20150913 2235

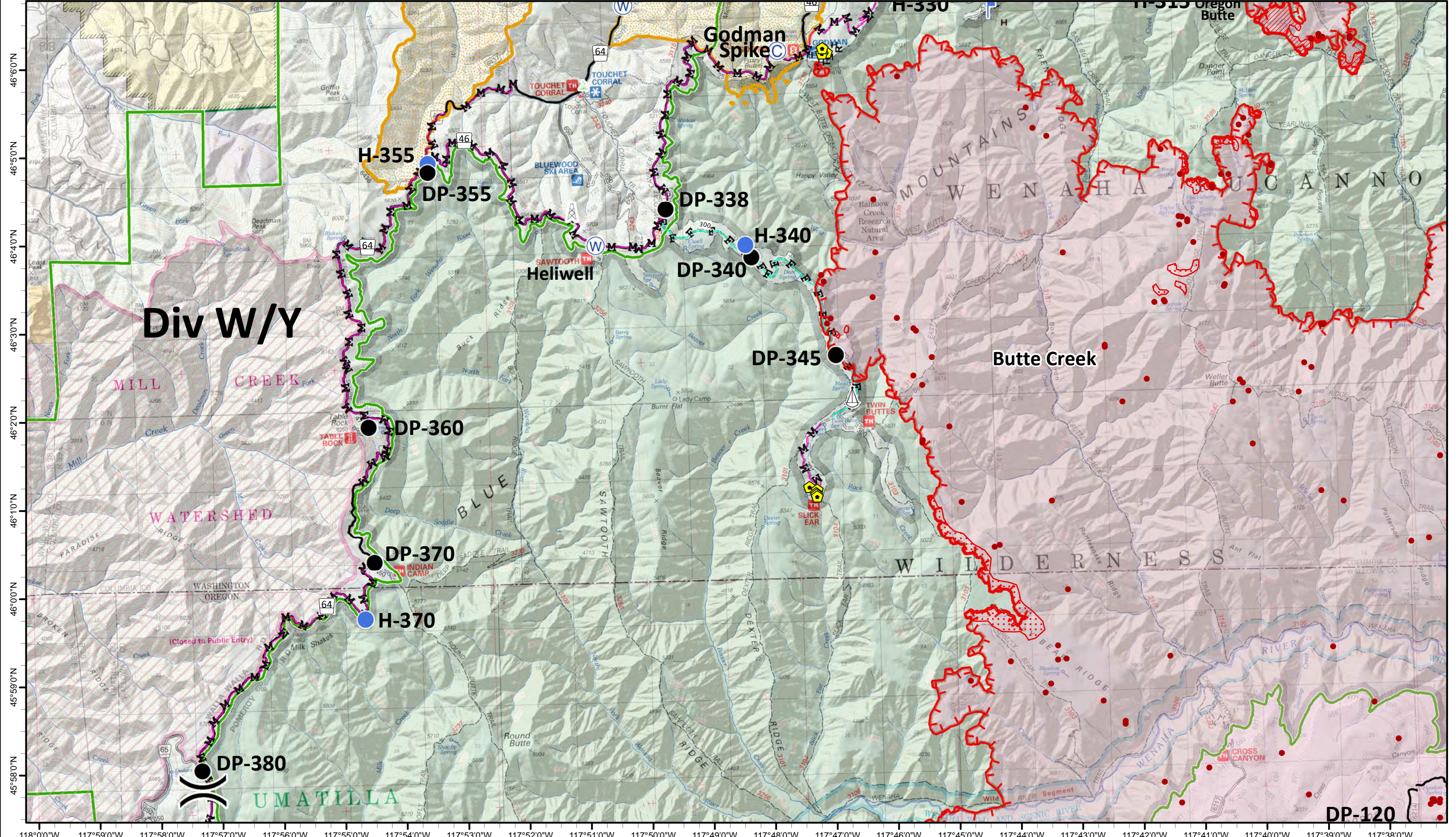
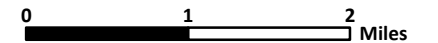
- Isolated Heat
- Ⓡ Repeaters
- Ⓢ Camp
- Drop Point

- Helispot
- WX Mobile Weather Unit
- W Water Source

- Uncontrolled Fire Edge
- F F Feller/Buncher
- Cold Edge
- M M Masticator

- Completed Dozer Line
- H - H - Hand Line
- R - R - Road as Completed Line

- Washington DNR Protection Area
- ODF Protection Area
- Columbia Complex 2006
- Upper Mill Creek Municipal Watershed



DP-120