

Grizzly Bear Complex

OR-UMF-000947

IAP Tile: DIV M

Sept. 16, 2015

GIS Acres: 77,345 IR: 20150913 2235

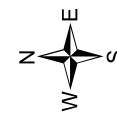
- Isolated Heat
- Ⓡ Repeaters
- Ⓒ Camp
- Drop Point

- Helispot
- WX Mobile Weather Unit
- W Water Source

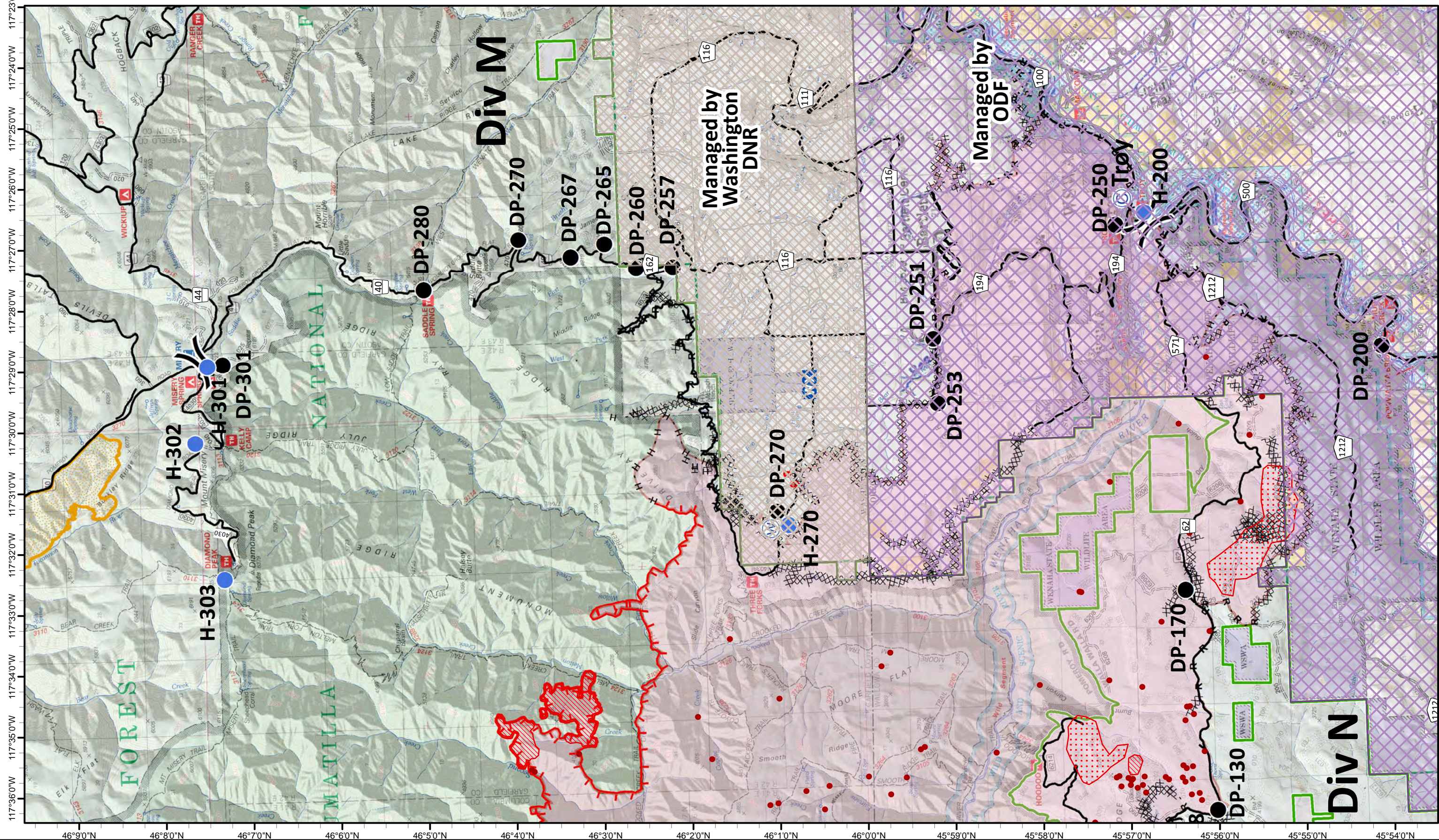
- Uncontrolled Fire Edge
- F-F Feller/Buncher
- Cold Edge
- M-M Masticator

- Completed Dozer Line
- H - H - Hand Line
- R - R - Road as Completed Line

- Washington DNR Protection Area
- ODF Protection Area
- Columbia Complex 2006
- Upper Mill Creek Municipal Watershed



0 1 2 Miles



Grizzly Bear Complex

OR-UMF-000947

IAP Tile: DIV N

Sept. 16, 2015

GIS Acres: 77,345 IR: 20150913 2235

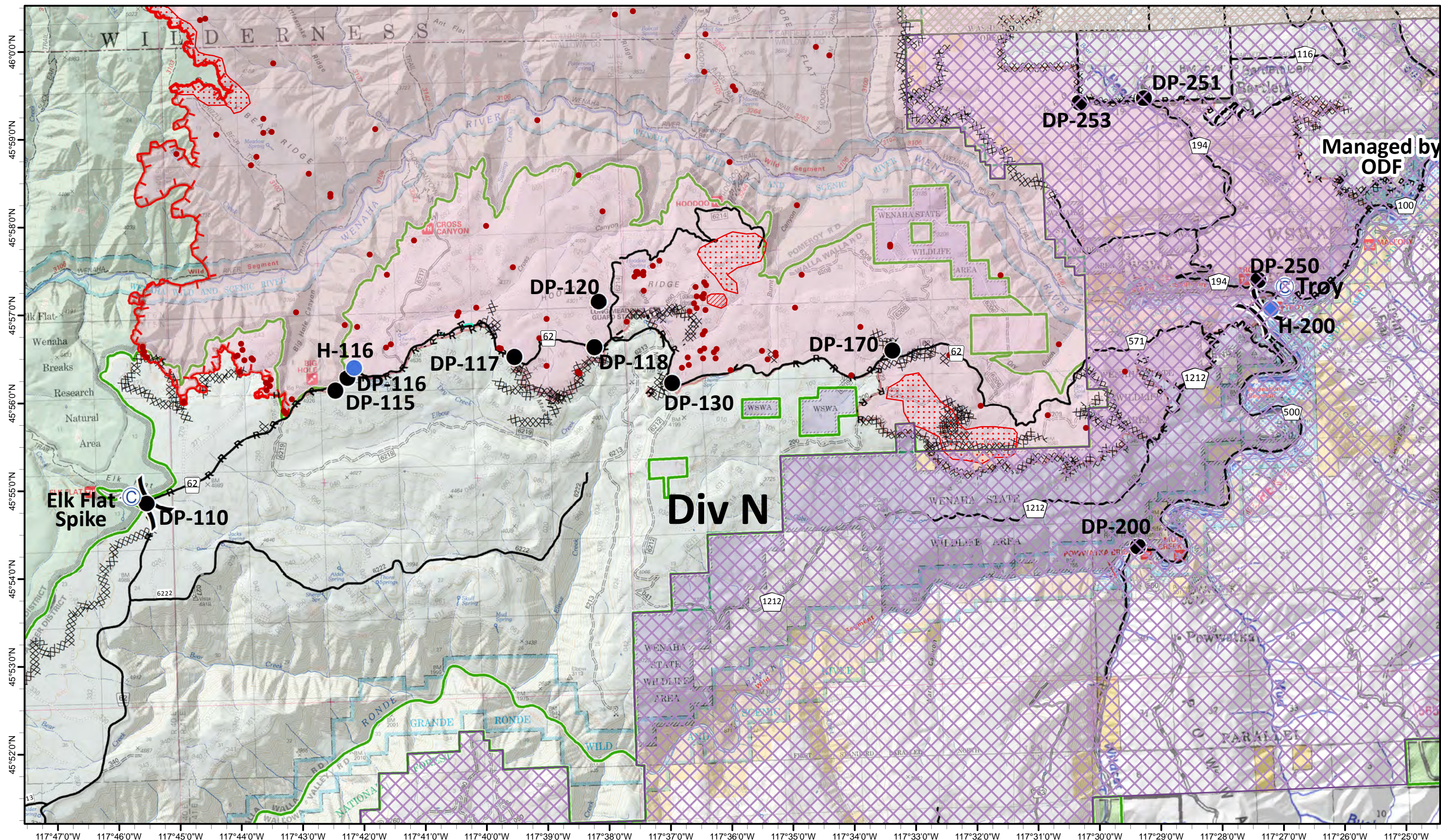
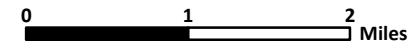
- Isolated Heat
- Ⓡ Repeaters
- Ⓒ Camp
- Drop Point

- Helispot
- WX Mobile Weather Unit
- W Water Source

- Uncontrolled Fire Edge
- F-F Feller/Buncher
- Cold Edge
- M-M Masticator

- Completed Dozer Line
- H - H - Hand Line
- R - R - Road as Completed Line

- Washington DNR Protection Area
- ODF Protection Area
- Columbia Complex 2006
- Upper Mill Creek Municipal Watershed



Managed by ODF

Div N

DP-251
DP-253

DP-250
Troy
H-200

DP-170

DP-120

H-116
DP-116
DP-115

DP-117

DP-130

DP-200

Elk Flat Spike
DP-110

Grizzly Bear Complex

OR-UMF-000947

IAP Tile: DIV R

Sept.16, 2015

GIS Acres: 77,345 IR: 20150913 2235

● Isolated Heat

Ⓡ Repeaters

Ⓒ Camp

● Drop Point

● Helispot

WX Mobile Weather Unit

W Water Source

Uncontrolled Fire Edge

F Feller/Buncher

— Cold Edge

M Masticator

Completed Dozer Line

H - H - Hand Line

R - R - Road as Completed Line

Washington DNR Protection Area

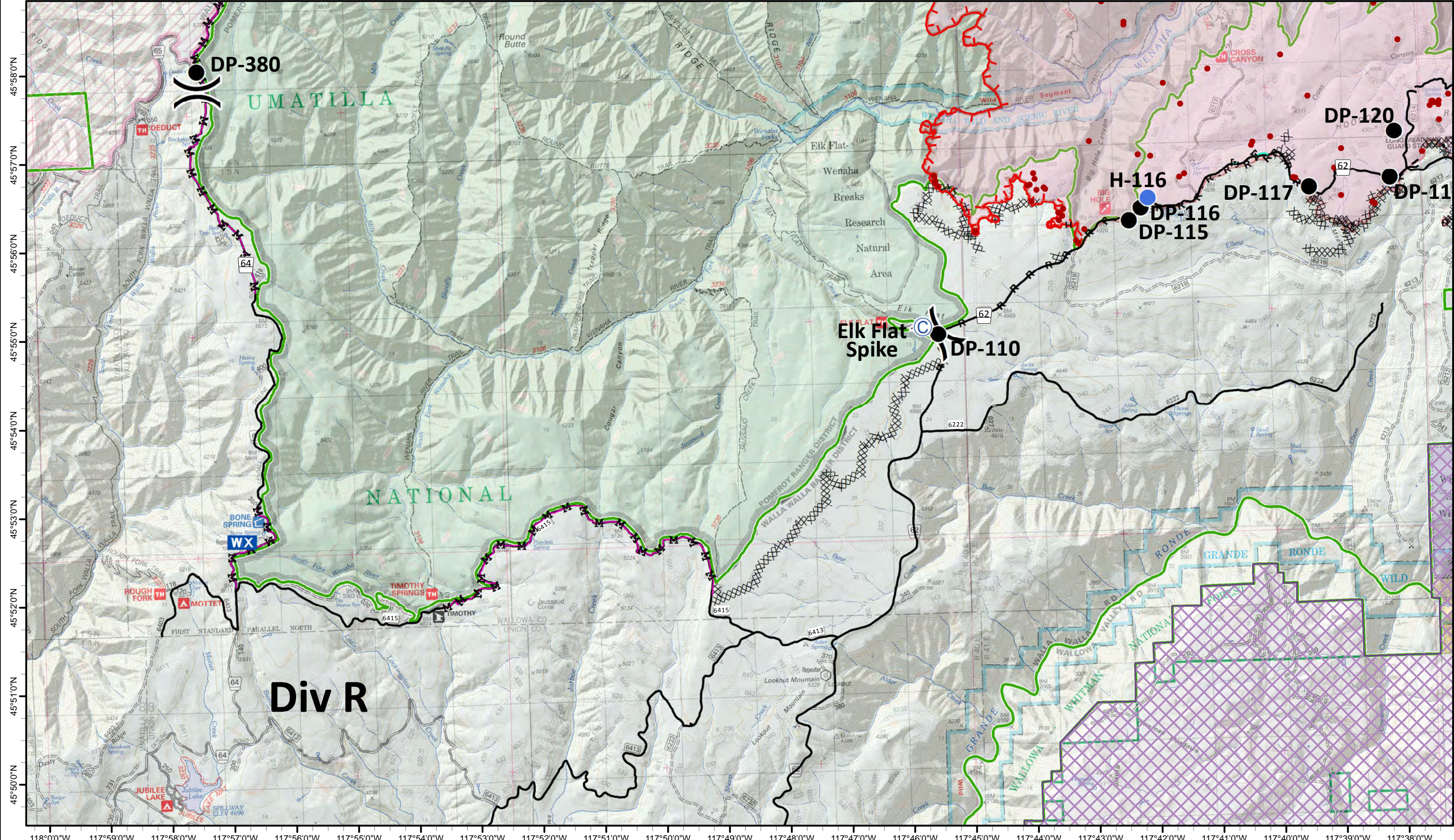
ODF Protection Area

Columbia Complex 2006

Upper Mill Creek Municipal Watershed



0 1 2 Miles



Grizzly Bear Complex

OR-UMF-000947

IAP Tile: DIV W/Y (East)

Sept.16, 2015

GIS Acres: 77,345 IR: 20150913 2235

● Isolated Heat

Ⓡ Repeaters

Ⓒ Camp

● Drop Point

● Helispot

WX Mobile Weather Unit

W Water Source

Uncontrolled Fire Edge

F F Feller/Buncher

— Cold Edge

M M Masticator

Completed Dozer Line

H - H - Hand Line

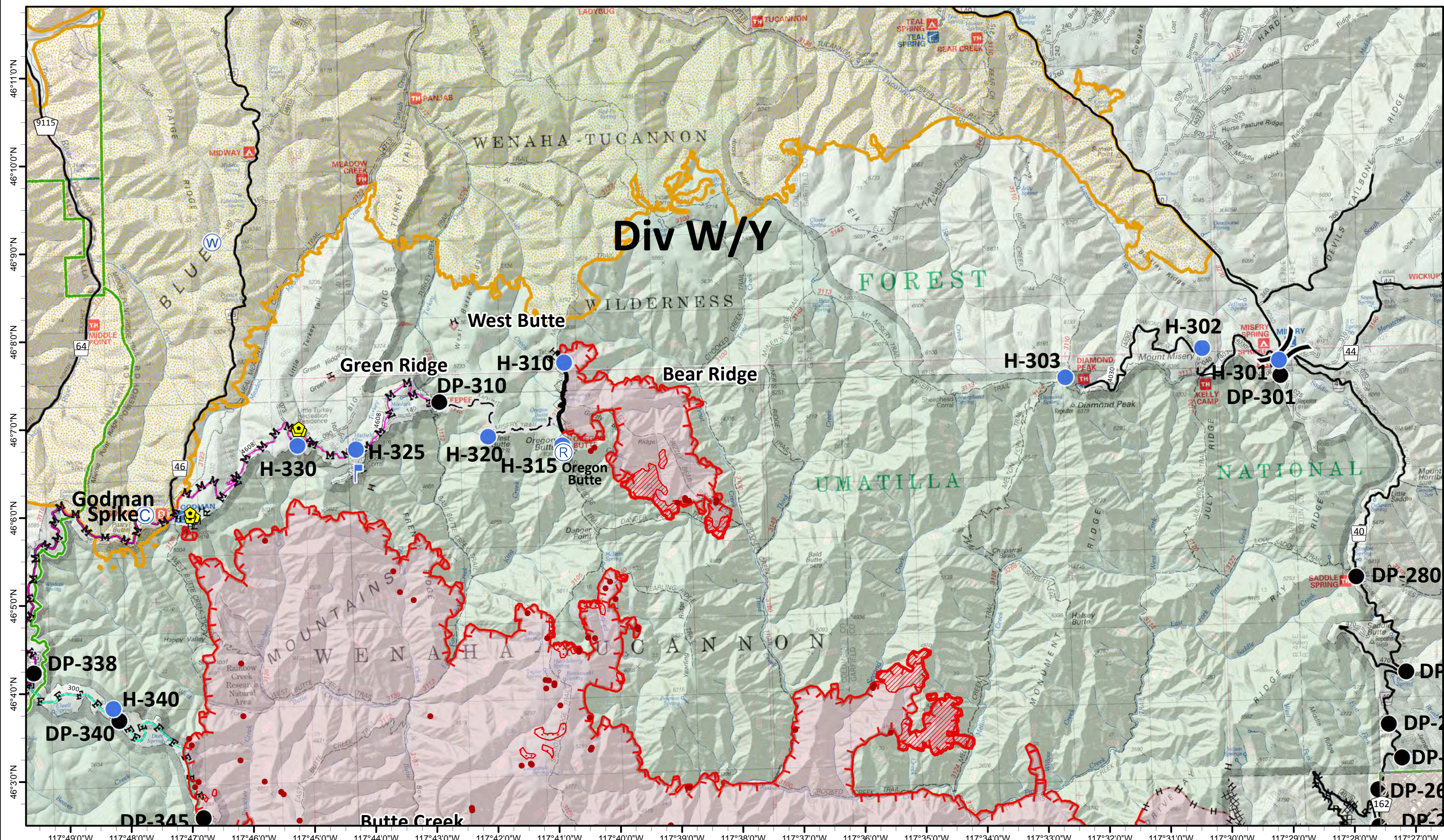
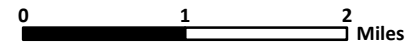
R - R - Road as Completed Line

Washington DNR Protection Area

ODF Protection Area

Columbia Complex 2006

Upper Mill Creek Municipal Watershed



Grizzly Bear Complex

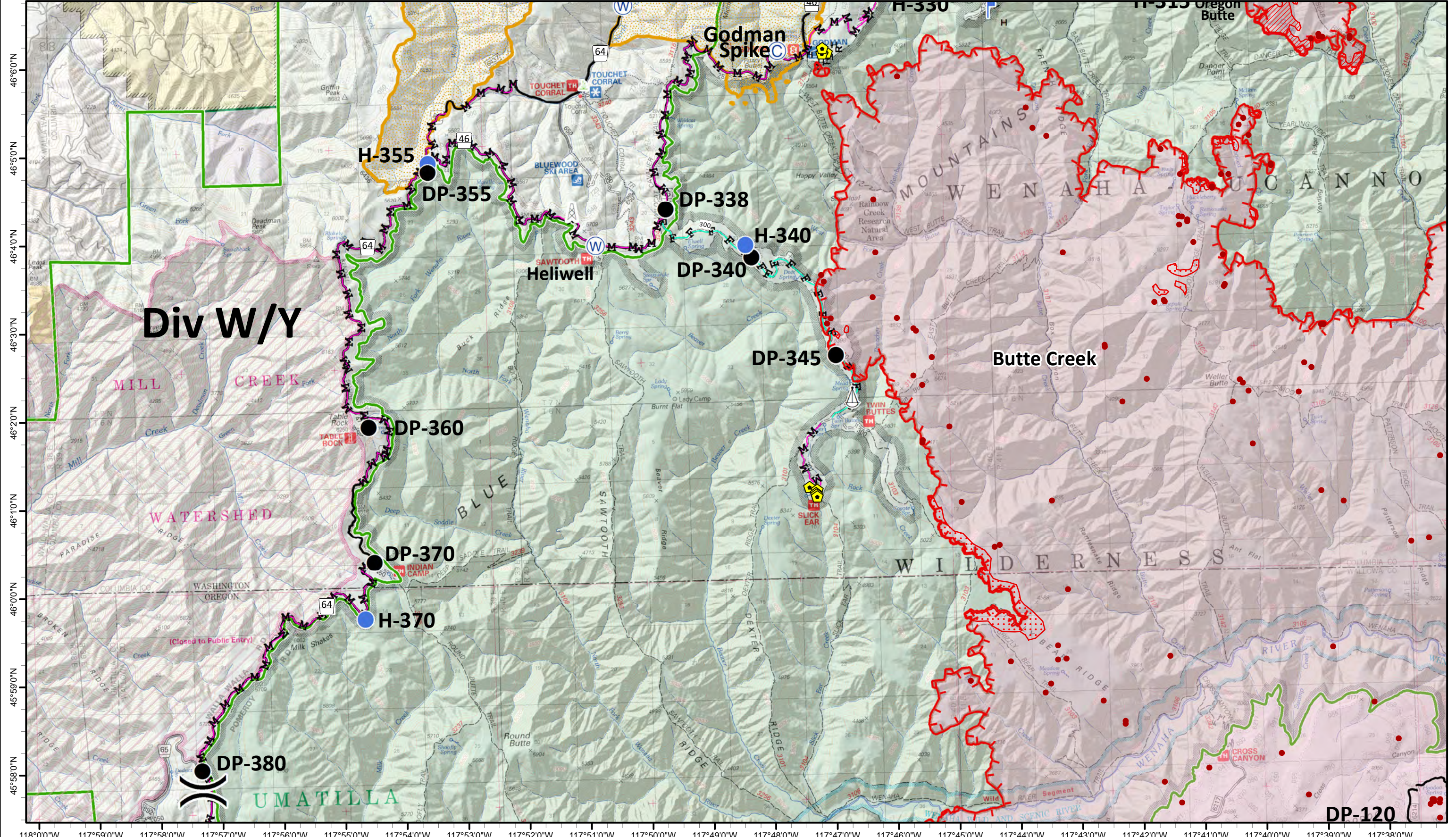
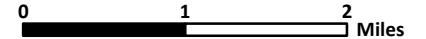
OR-UMF-000947

IAP Tile: DIV W/Y (West)

Sept.16, 2015

GIS Acres: 77,345 IR: 20150913 2235

- Isolated Heat
- Helispot
- ▬ Uncontrolled Fire Edge
- ▬ Feller/Buncher
- ▬ Cold Edge
- ▬ Masticator
- ⊗ Repeater
- ⊗ Mobile Weather Unit
- ⊗ Camp
- ⊗ Drop Point
- ▬ Completed Dozer Line
- H - H - Hand Line
- R - R - Road as Completed Line
- ▨ Washington DNR Protection Area
- ▨ ODF Protection Area
- ▨ Columbia Complex 2006
- ▨ Upper Mill Creek Municipal Watershed



Div W/Y

Butte Creek

UMATILLA

DP-120