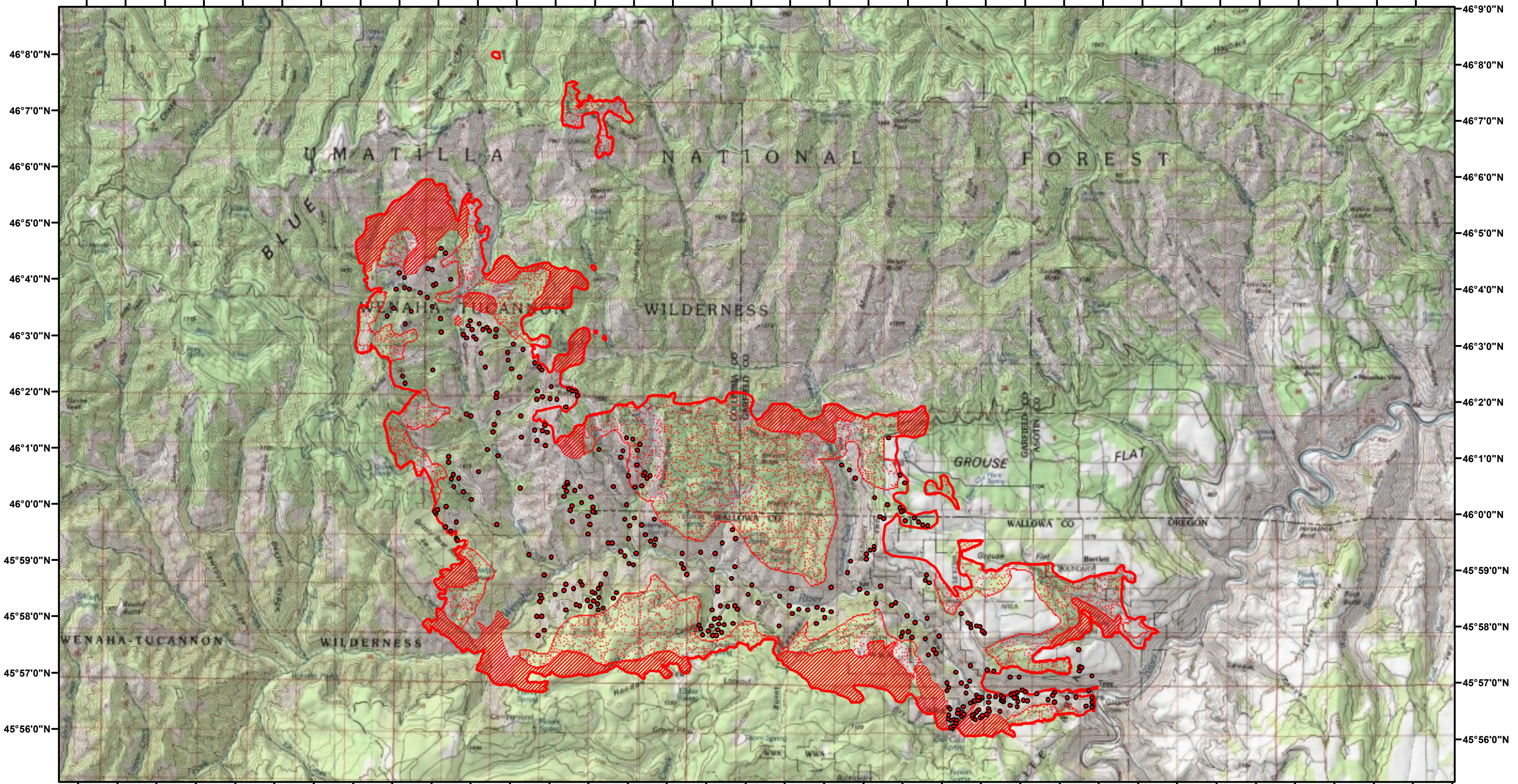






117°53'0"W 117°51'0"W 117°49'0"W 117°47'0"W 117°45'0"W 117°43'0"W 117°41'0"W 117°39'0"W 117°37'0"W 117°35'0"W 117°33'0"W 117°31'0"W 117°29'0"W 117°27'0"W 117°25'0"W 117°23'0"W 117°21'0"W 117°19'0"W



117°53'0"W 117°51'0"W 117°49'0"W 117°47'0"W 117°45'0"W 117°43'0"W 117°41'0"W 117°39'0"W 117°37'0"W 117°35'0"W 117°33'0"W 117°31'0"W 117°29'0"W 117°27'0"W 117°25'0"W 117°23'0"W 117°21'0"W 117°19'0"W

Grizzly Bear Complex  
Incident # - OR-UMF-000947  
Infrared Imagery Map  
Imagery Flown:  
August 21, 2015 - 2008 (PDT)  
Interpreted Acres: 50,625 Acres  
IRIN: Bob Brantlinger

**Legend**

-  Heat Perimeter
-  Intense Heat
-  Isolated Heat Source
-  Scattered Heat Source

