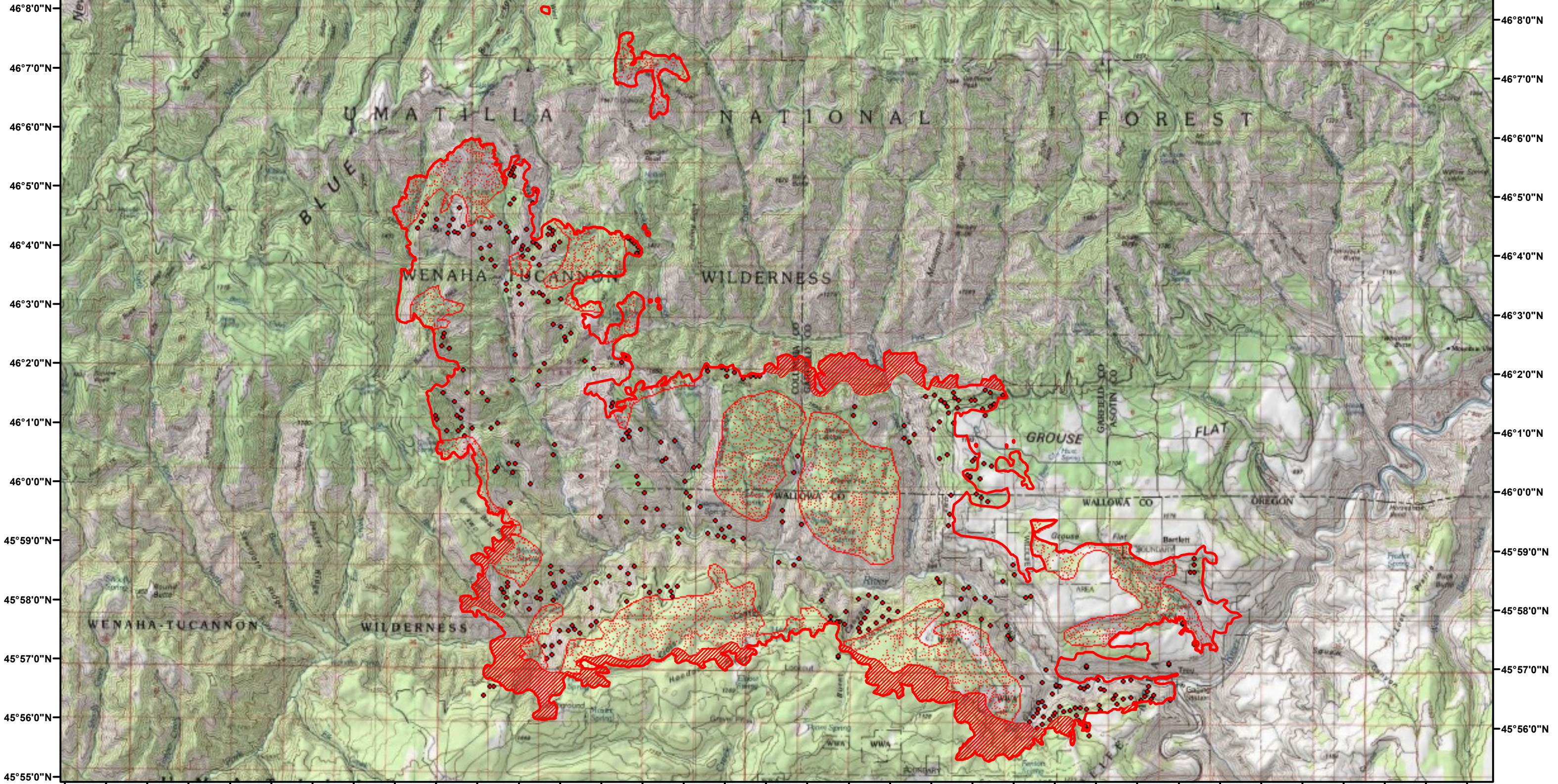





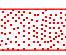
117°54'0"W 117°52'0"W 117°50'0"W 117°48'0"W 117°46'0"W 117°44'0"W 117°42'0"W 117°40'0"W 117°38'0"W 117°36'0"W 117°34'0"W 117°32'0"W 117°30'0"W 117°28'0"W 117°26'0"W 117°24'0"W 117°22'0"W 117°20'0"W



46°8'0"N 46°7'0"N 46°6'0"N 46°5'0"N 46°4'0"N 46°3'0"N 46°2'0"N 46°1'0"N 46°0'0"N 45°59'0"N 45°58'0"N 45°57'0"N 45°56'0"N 45°55'0"N

Grizzly Bear Complex
Incident # - OR-UMF-000947
Infrared Imagery Map
Imagery Flown:
August 22, 2015 - 2230 (PDT)
Interpreted Acres: 54,914 Acres
IRIN: Bob Brantlinger

Legend

-  Heat Perimeter
-  Intense Heat
-  Isolated Heat Source
-  Scattered Heat Source

