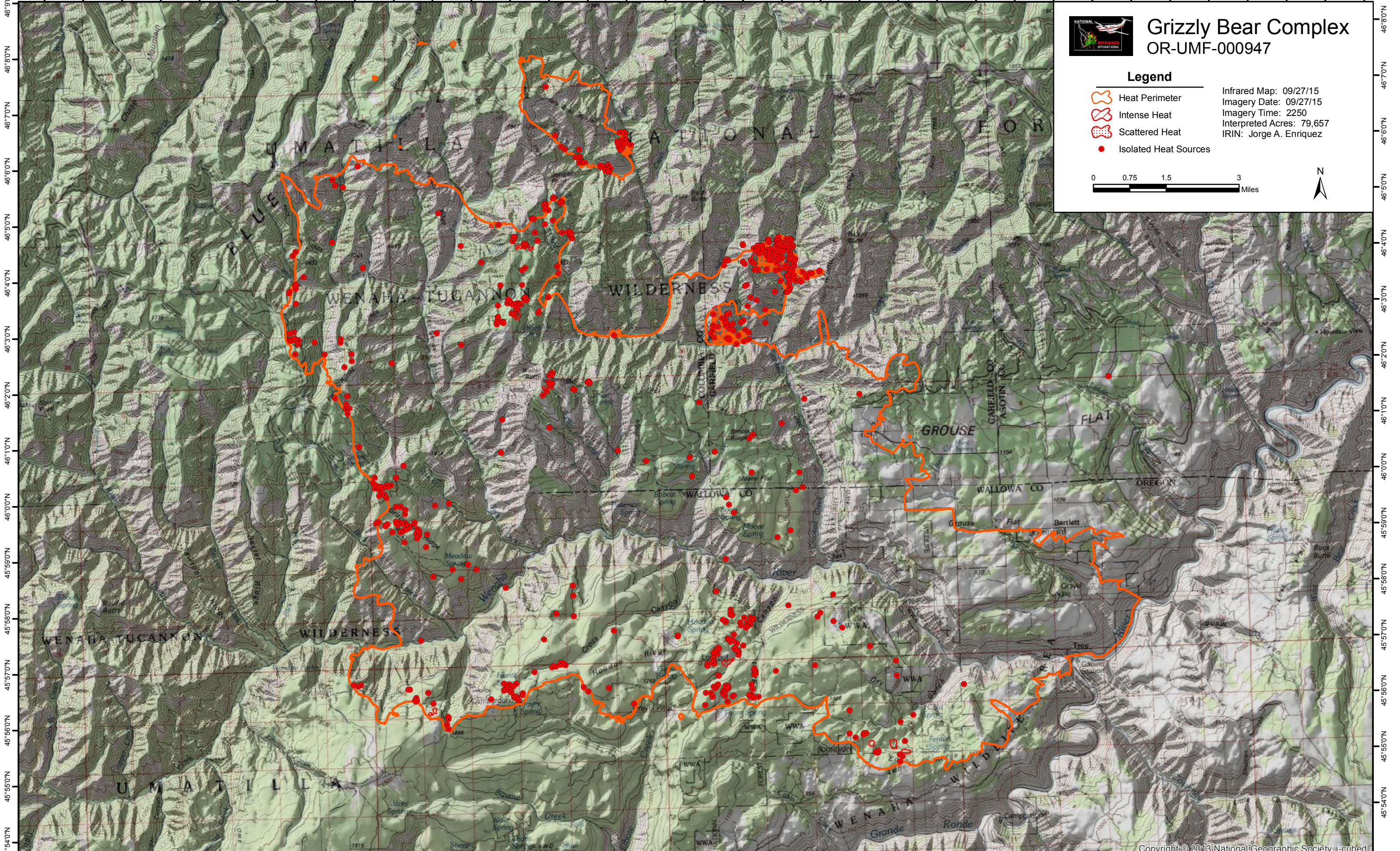


117°53'0"W 117°52'0"W 117°51'0"W 117°50'0"W 117°49'0"W 117°48'0"W 117°47'0"W 117°46'0"W 117°45'0"W 117°44'0"W 117°43'0"W 117°42'0"W 117°41'0"W 117°40'0"W 117°39'0"W 117°38'0"W 117°37'0"W 117°36'0"W 117°35'0"W 117°34'0"W 117°33'0"W 117°32'0"W 117°31'0"W 117°30'0"W 117°29'0"W 117°28'0"W 117°27'0"W 117°26'0"W 117°25'0"W 117°24'0"W 117°23'0"W 117°22'0"W 117°21'0"W 117°20'0"W 117°19'0"W



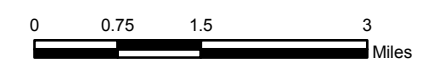
# Grizzly Bear Complex

## OR-UMF-000947

### Legend

- Heat Perimeter
- Intense Heat
- Scattered Heat
- Isolated Heat Sources

Infrared Map: 09/27/15  
 Imagery Date: 09/27/15  
 Imagery Time: 2250  
 Interpreted Acres: 79,657  
 IRIN: Jorge A. Enriquez



117°54'0"W 117°53'0"W 117°52'0"W 117°51'0"W 117°50'0"W 117°49'0"W 117°48'0"W 117°47'0"W 117°46'0"W 117°45'0"W 117°44'0"W 117°43'0"W 117°42'0"W 117°41'0"W 117°40'0"W 117°39'0"W 117°38'0"W 117°37'0"W 117°36'0"W 117°35'0"W 117°34'0"W 117°33'0"W 117°32'0"W 117°31'0"W 117°30'0"W 117°29'0"W 117°28'0"W 117°27'0"W 117°26'0"W 117°25'0"W 117°24'0"W 117°23'0"W 117°22'0"W 117°21'0"W 117°20'0"W