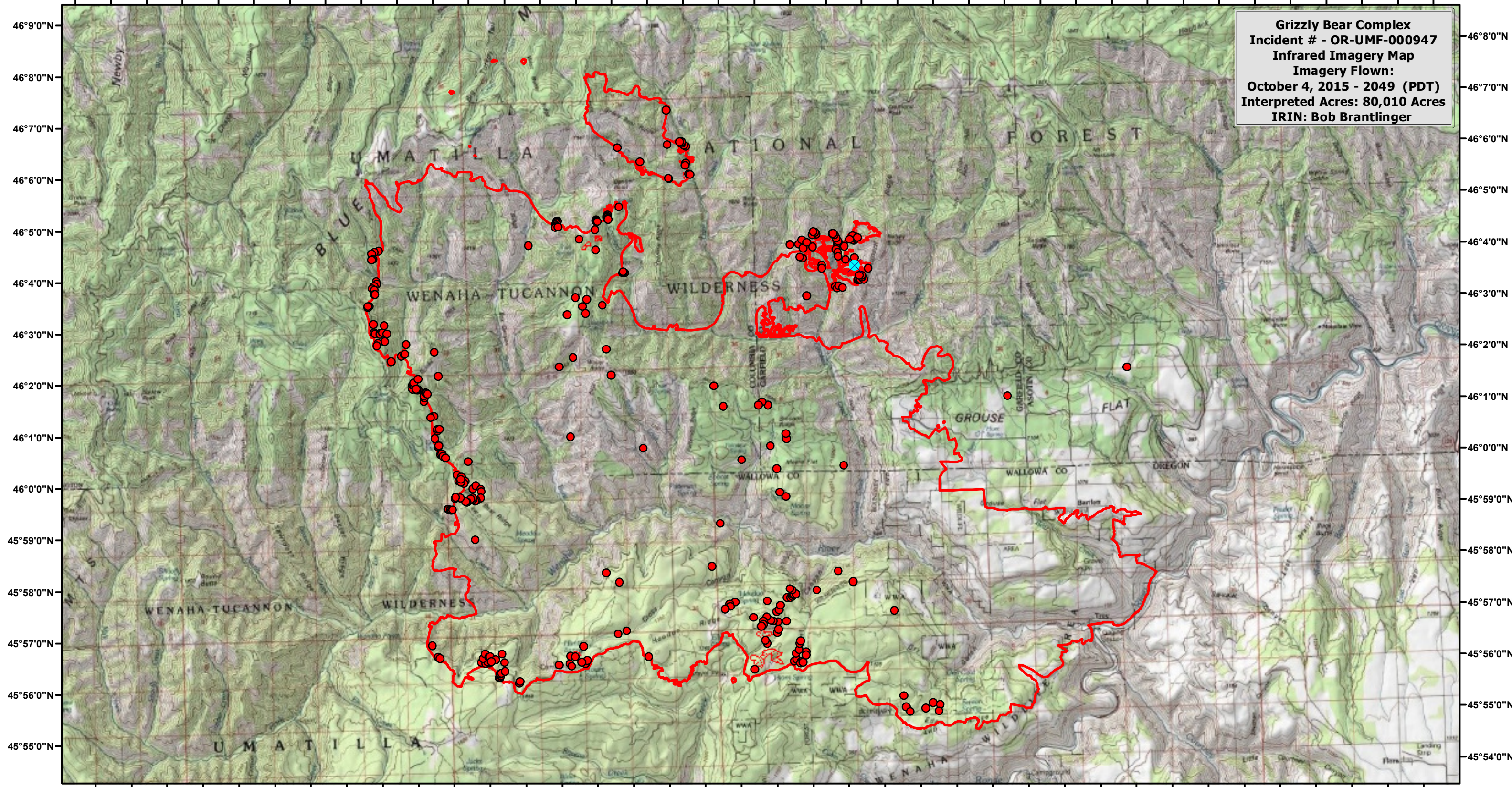





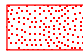
117°55'0"W 117°53'0"W 117°51'0"W 117°49'0"W 117°47'0"W 117°45'0"W 117°43'0"W 117°41'0"W 117°39'0"W 117°37'0"W 117°35'0"W 117°33'0"W 117°31'0"W 117°29'0"W 117°27'0"W 117°25'0"W 117°23'0"W 117°21'0"W 117°19'0"W 117°17'0"W



Grizzly Bear Complex
Incident # - OR-UMF-000947
Infrared Imagery Map
Imagery Flown:
October 4, 2015 - 2049 (PDT)
Interpreted Acres: 80,010 Acres
IRIN: Bob Brantlinger

117°54'0"W 117°52'0"W 117°50'0"W 117°48'0"W 117°46'0"W 117°44'0"W 117°42'0"W 117°40'0"W 117°38'0"W 117°36'0"W 117°34'0"W 117°32'0"W 117°30'0"W 117°28'0"W 117°26'0"W 117°24'0"W 117°22'0"W 117°20'0"W 117°18'0"W

Legend

-  **Heat Perimeter**
-  **Intense Heat**
-  **Isolated Heat Source**
-  **Scattered Heat Source**

