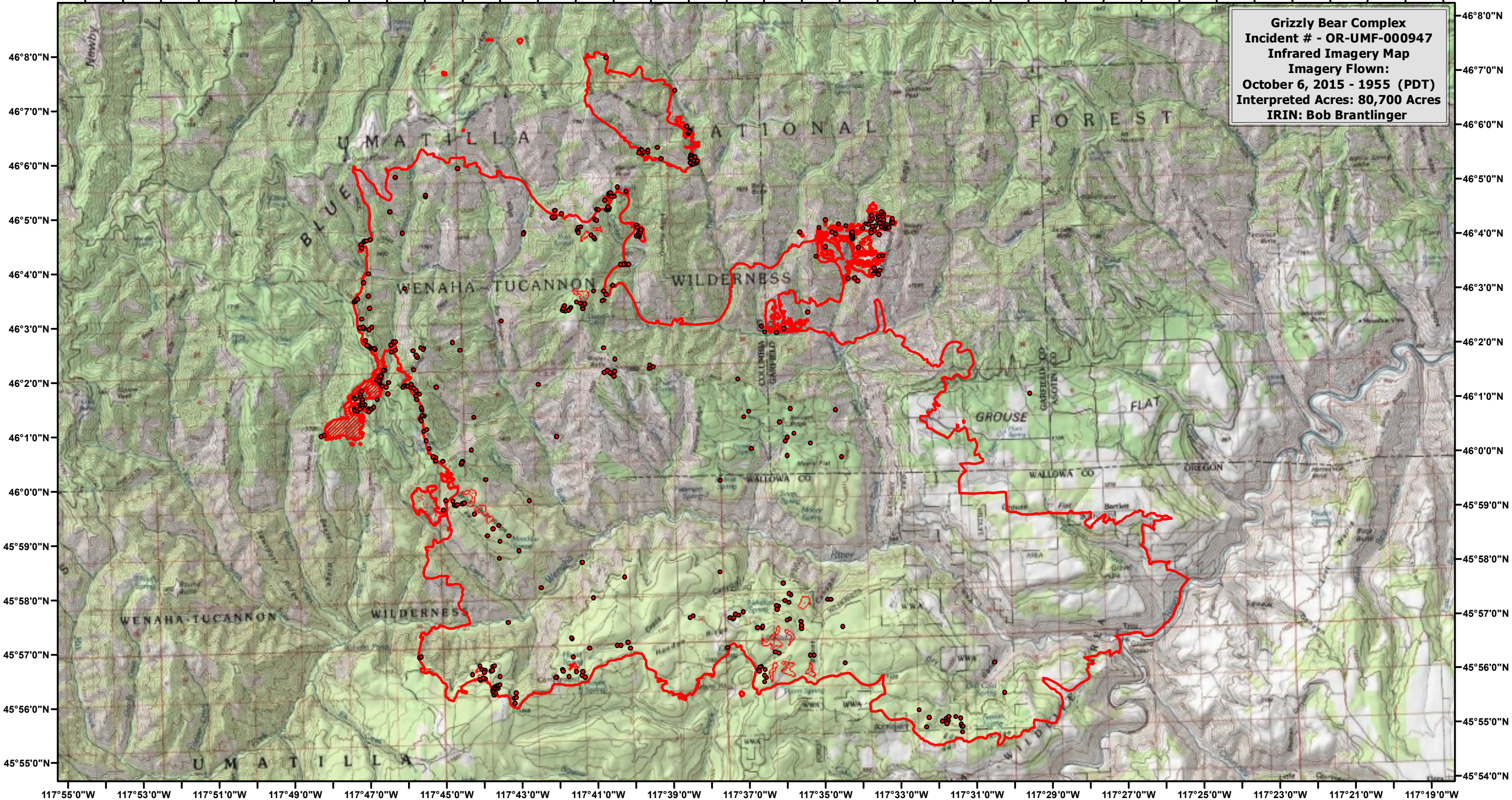



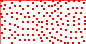


117°54'0"W 117°52'0"W 117°50'0"W 117°48'0"W 117°46'0"W 117°44'0"W 117°42'0"W 117°40'0"W 117°38'0"W 117°36'0"W 117°34'0"W 117°32'0"W 117°30'0"W 117°28'0"W 117°26'0"W 117°24'0"W 117°22'0"W 117°20'0"W 117°18'0"W

Grizzly Bear Complex
Incident # - OR-UMF-000947
Infrared Imagery Map
Imagery Flown:
October 6, 2015 - 1955 (PDT)
Interpreted Acres: 80,700 Acres
IRIN: Bob Brantlinger



Legend

-  **Heat Perimeter**
-  **Intense Heat**
-  **Isolated Heat Source**
-  **Scattered Heat Source**

