

119°19'W

119°18'W

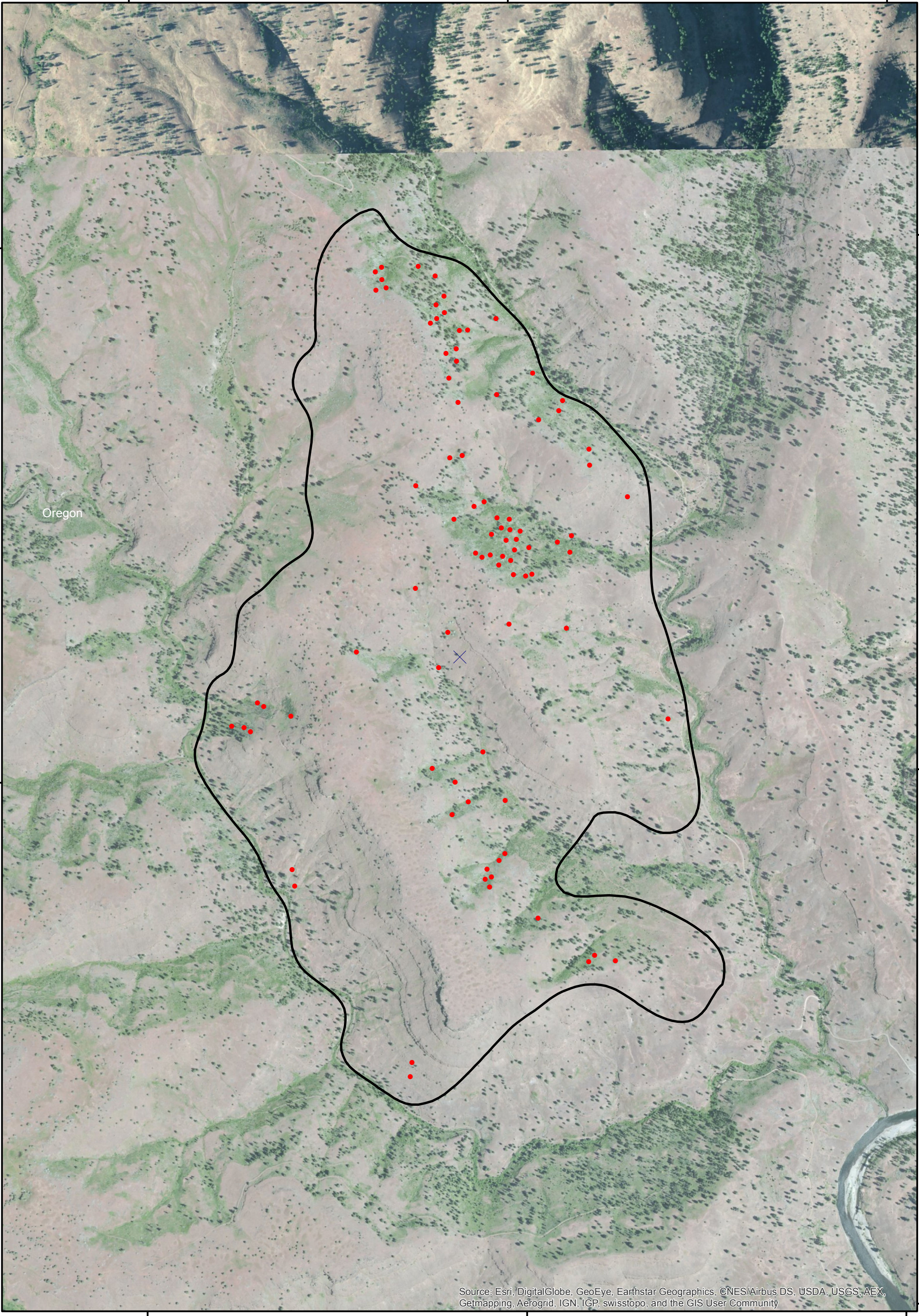
119°17'W

45°0'N

45°0'N

44°59'N

44°59'N



Oregon



Source: Esri, DigitalGlobe, GeoEye, Earthstar Geographics, CNES/Airbus DS, USDA, USGS, AEX, Getmapping, Aerogrid, IGN, IGP, swisstopo, and the GIS User Community

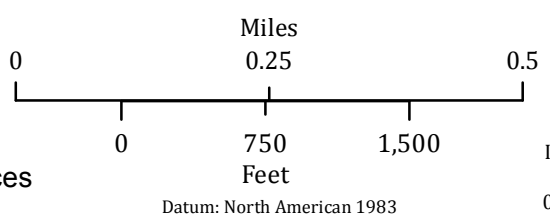
119°19'W

119°18'W

119°17'W

Jones Canyon
 OR-952S-015118
 Infrared Interpretation
 Imagery Date:
 7/1/2015 2244 hrs

-  Incident Perimeter
-  Isolated Heat Sources



IRIN: Jacob Rosenberg
 Map produced:
 07/02/2015 0114 hrs

