

119°19'W

119°18'W

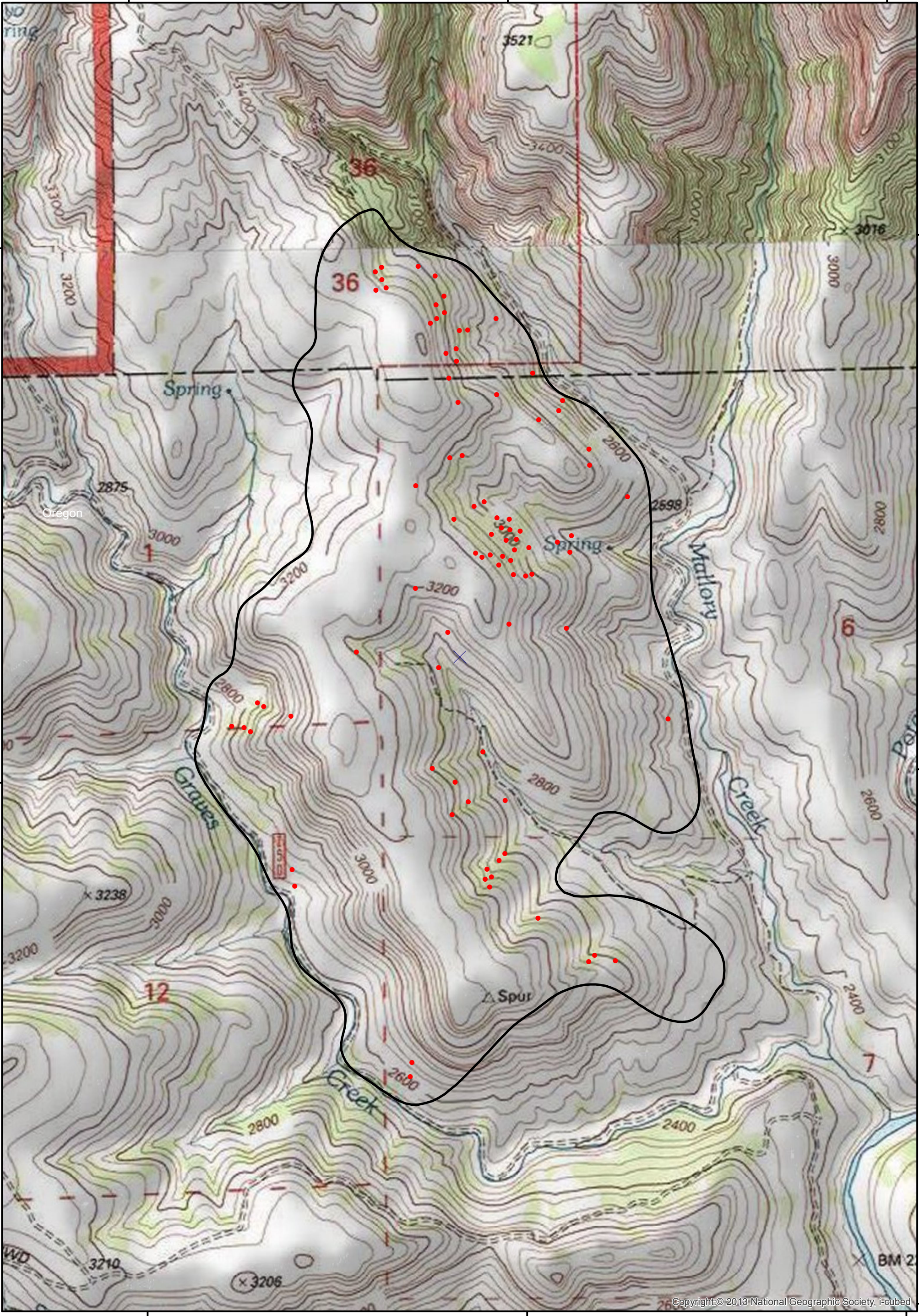
119°17'W

45°00'N

45°00'N

44°59'N

44°59'N





Copyright © 2013 National Geographic Society, i-cubed

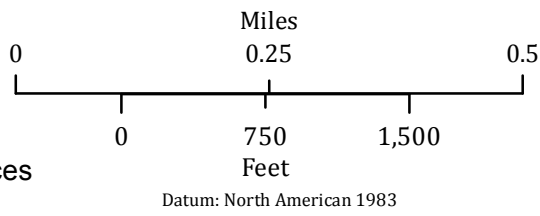
119°19'W

119°18'W

119°17'W

Jones Canyon
 OR-952S-015118
 Infrared Interpretation
 Imagery Date:
 7/1/2015 2244 hrs

-  Incident Perimeter
-  Isolated Heat Sources



IRIN: Jacob Rosenberg
 Map produced:
 07/02/2015 0113 hrs

