

119°19'W

R28E

119°18'W

R29E

119°17'W

T6S

45°0'N

44°59'N

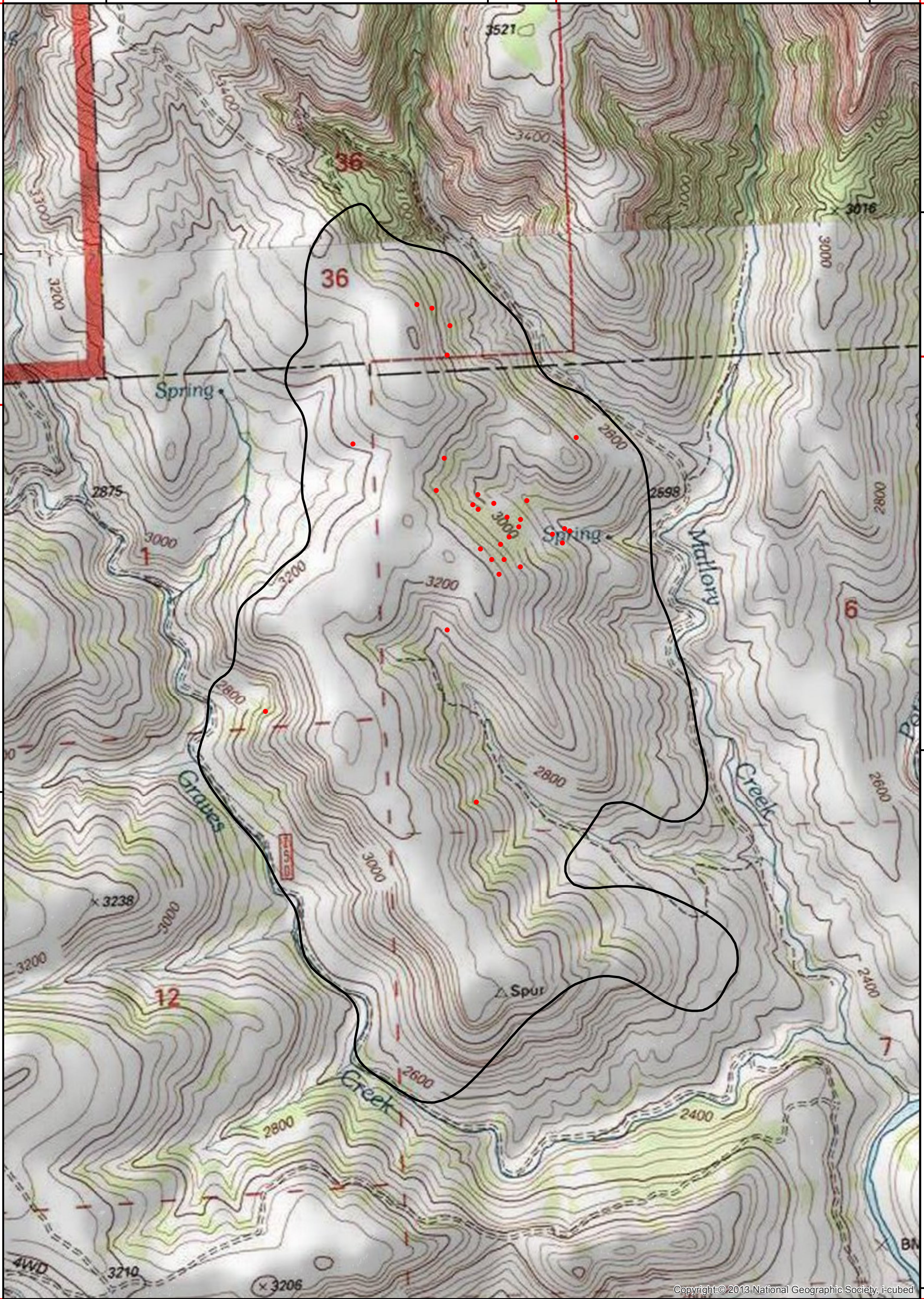
T7S

T6S

44°59'N

T7S

44°58'N



Copyright © 2013 National Geographic Society, i-cubed

119°19'W

R28E





119°18'W

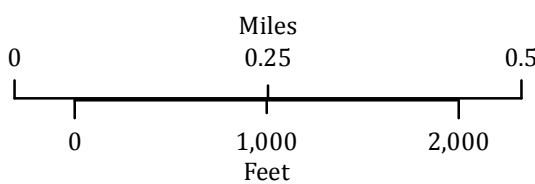
R29E

Jones Canyon Fire

OR-952S-015118

Infrared Interpretation

-  Perimeter from incident 07/01/2015 1230PDT
-  Intense Heat
-  Scattered Heat
-  Isolated Heat Sources



Imagery Date:
07/02/2015 2122 PDT

Datum: North American 1983

IRIN-T: Howard Harrison
Map produced:
07/02/2015 2215 PDT

