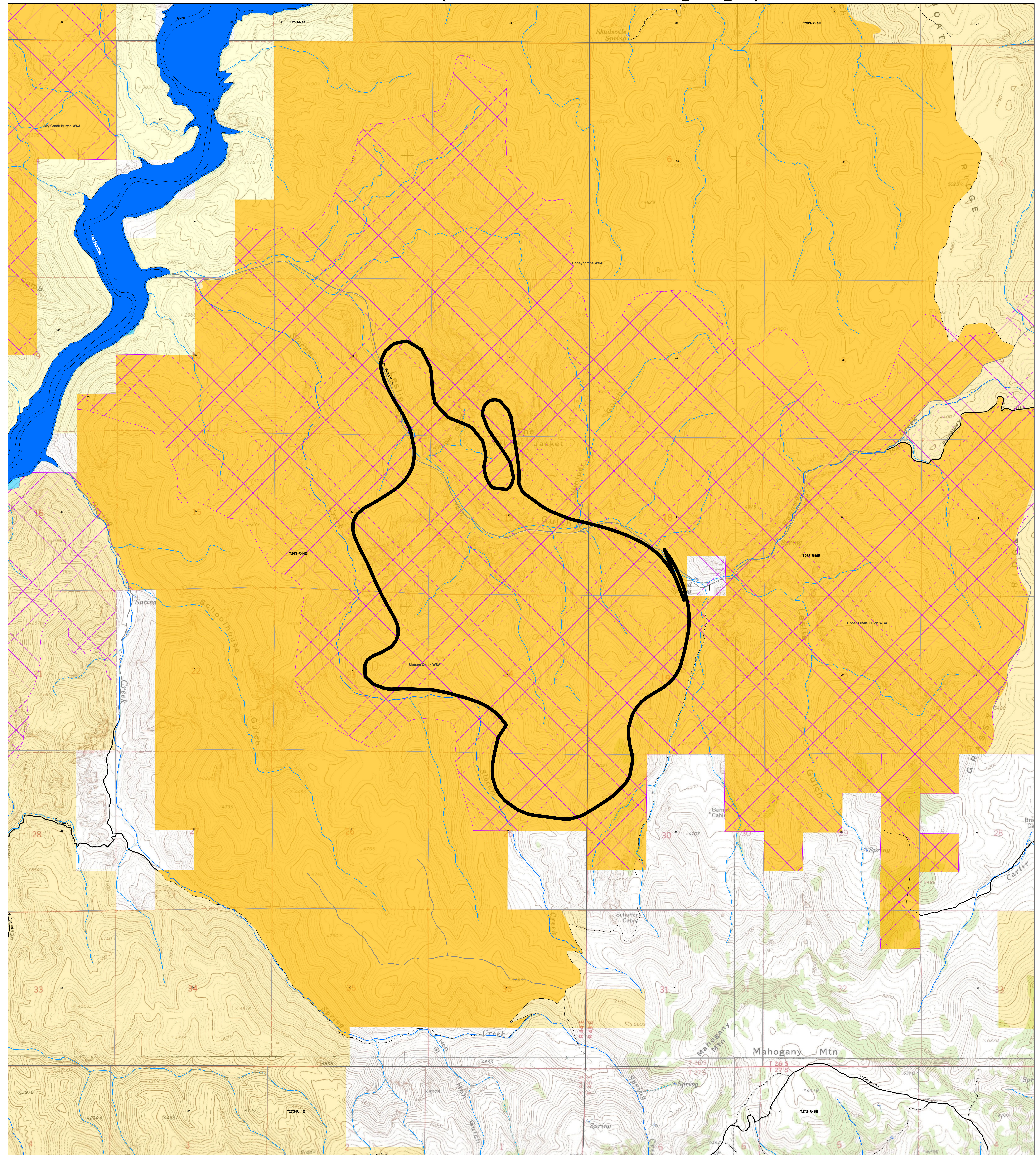
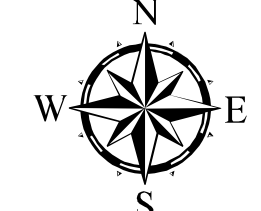
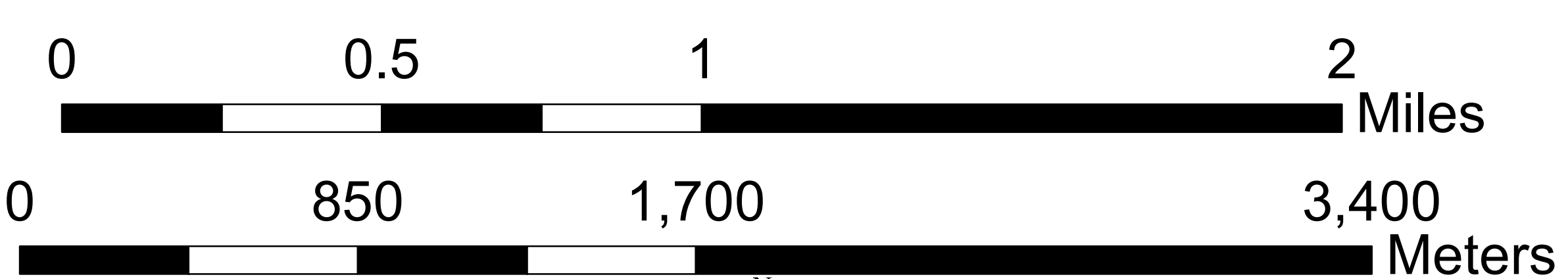


LESLIE GULCH

ACRES: 2123 (GPS'd 6/29/2015 Morning Flight)



- Legend**
- 20150629_JACA_AM_FLIGHT
 - <all other values>
 - Impoundment
 - Intermittent Lake/pond
 - Wilderness Study Area
 - Areas of Critical Environmental Concern
 - Bureau of Land Management
 - Bureau of Reclamation
 - Bureau of Indian Affairs
 - Other Federal
 - U.S. Forest Service
 - Private
 - State Lands
 - Corps of Engineers
 - U.S. Fish and Wildlife Service
 - National Park Service
 - WATER



No warranty is made by the Bureau of Land Management as to the accuracy, reliability, or completeness of these data of individual or aggregate use with other data. Original data were compiled from various sources. This information may not meet National Map Accuracy Standards. This product was developed through digital means and may be updated without notification.

U.S. Department of Interior
Bureau of Land Management



Vale District
6/29/2015
22:46
GIS: M. Russell