

121°53'0"W

121°52'30"W

121°52'0"W

121°51'30"W



Marion Incident
OR-WIF-000208
Infrared Map



Imagery Date: July 22 @ 2352hrs PDT
Interpreted Acres: 122
IRIN: Max Wahlberg

44°34'0"N

44°33'30"N

44°33'0"N

44°32'30"N

44°34'0"N

44°33'30"N

44°33'0"N

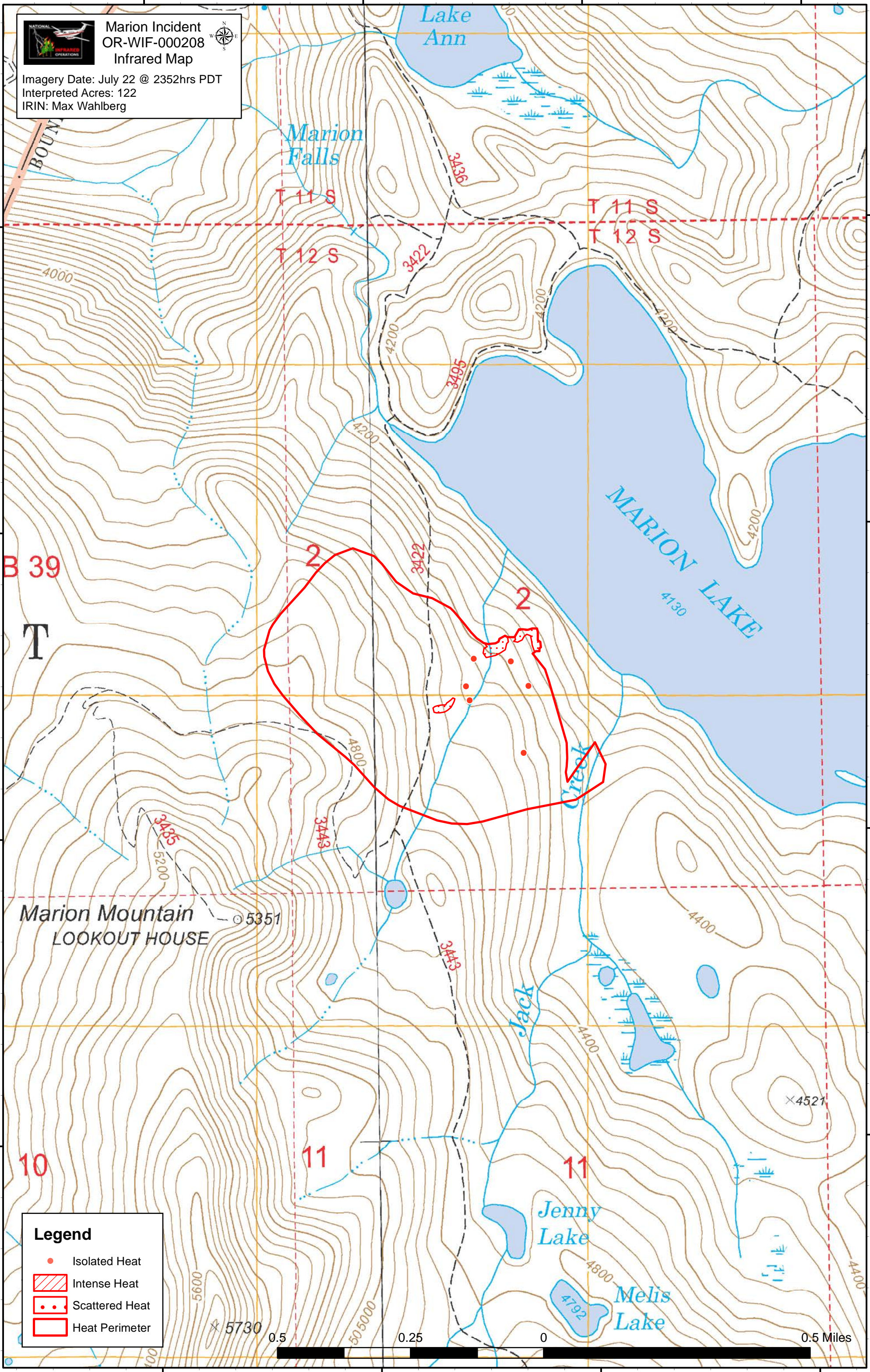
44°32'30"N

121°53'0"W

121°52'30"W

121°52'0"W

121°51'30"W



Legend

- Isolated Heat
- Intense Heat
- Scattered Heat
- Heat Perimeter

