

122°25'W

122°20'W

122°15'W

122°10'W

National Creek Complex

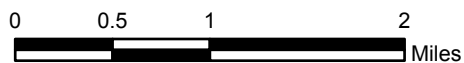
OR-RSF-000836
Crescent Fire: 297 acres
National Fire: 115 acres

Air Operations Map
August 10, 2015

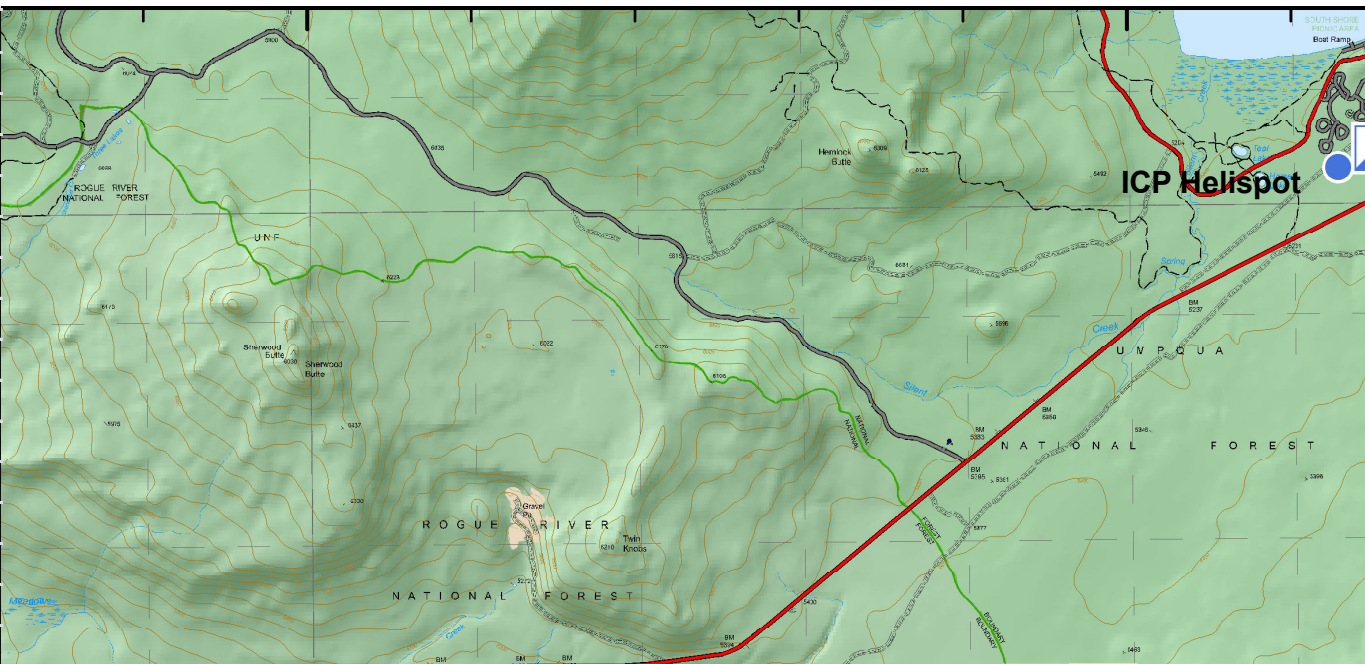
- Helispot
- Drop Point
- W Water Source
- R Repeater



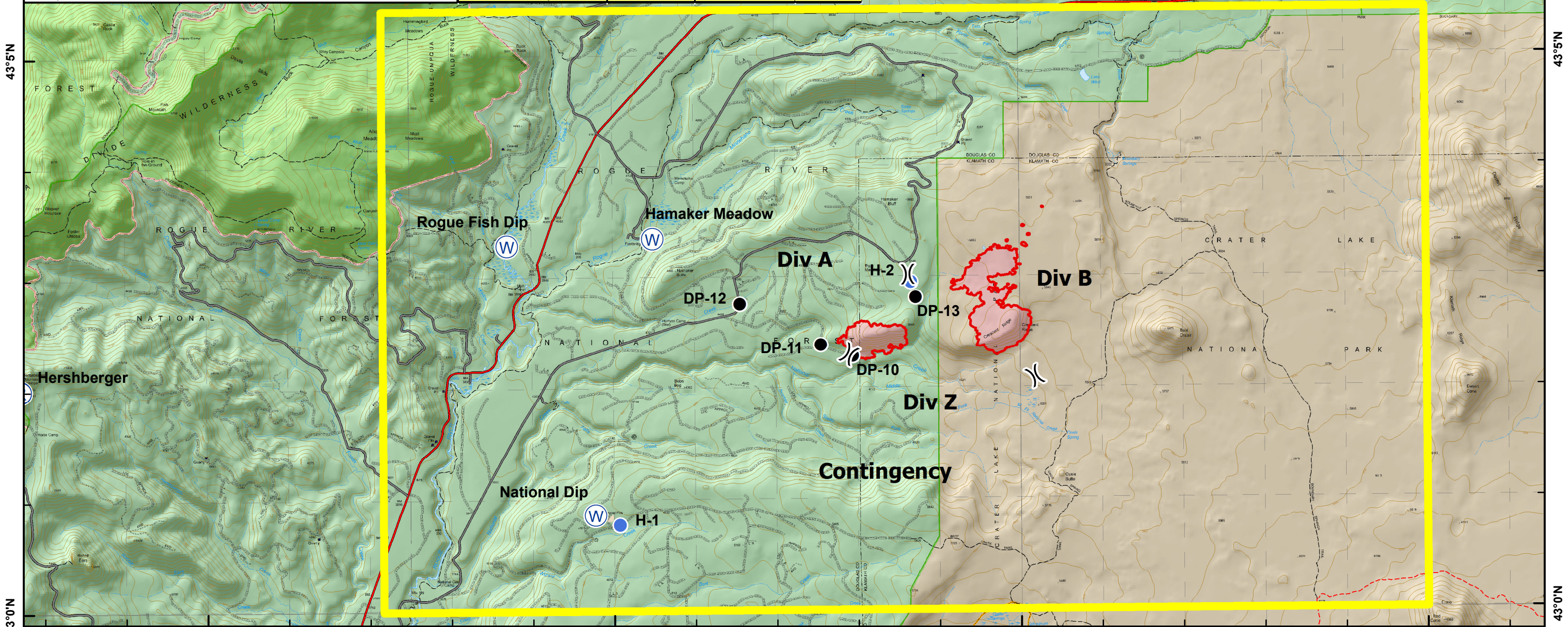
- TFR
- IR Perimeter 8/8/15 @ 2039



Name	Latitude	Longitude	Elevation
Prospect Helibase	42° 44.555' N	122° 29.338' W	2558
Hamaker Meadow	43° 3.36' N	122° 19.509' W	4002
National Dip	43° 0.871' N	122° 20.228' W	4638
Rogue Fish Dip	43° 3.3' N	122° 21.3' W	3920
Polebridge Dip	42° 50.703' N	122° 9.022' W	5961
H-1	43° 0.782' N	122° 19.925' W	4638
H-2	43° 2.959' N	122° 16.336' W	5507
ICP Helispot	43° 7.658' N	122° 8.726' W	5205
ICP	43° 7.741' N	122° 8.491' W	5209
DP-10	43° 2.295' N	122° 17.053' W	4700
DP-11	43° 2.394' N	122° 17.445' W	4636
DP-12	43° 2.763' N	122° 18.439' W	4490
DP-13	43° 2.818' N	122° 16.278' W	5487
Hershberger Repeater	43° 2.007' N	122° 27.286' W	6202
Watchman Repeater	42° 56.577' N	122° 10.345' W	8003



GKD August 9, 2015 2100



122°25'W

122°20'W

122°15'W

122°10'W

43°5'N

43°5'N

43°0'N

43°0'N