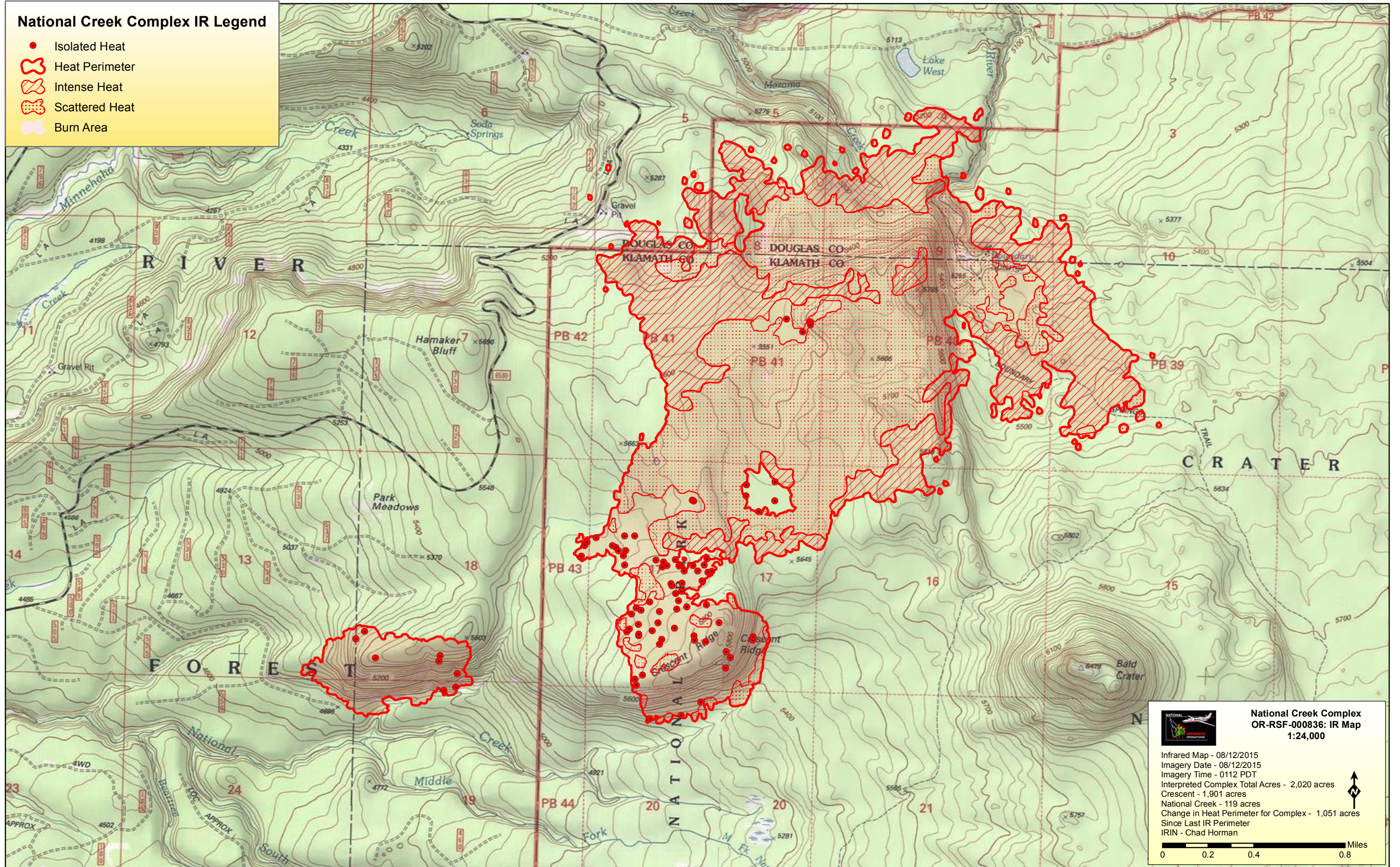



INFRARED INTERPRETER'S DAILY LOG

Incident Name: National Creek Complex	IR Interpreter(s): Chad Horman	Local Dispatch Phone: 541-618-2505	Interpreted Size: Complex Total - 2,020 acres Crescent Fire – 1,901 acres National Fire – 119 acres Growth last period: Complex Total – 1,051 acres Crescent Fire – 1,051 acres National Fire – 0 acres
Flight Time: 0122 PDT Flight Date: 8/12/15	Interpreter(s) location: Cedar City, Utah Interpreter(s) Phone: C – (435) 865-3731 Office C – (435) 590-6088 Cell chorman@fs.fed.us	GACC IR Liaison: Jim Grace GACC IR Liaison Phone: 541-771-4521	National Coordinator: Tom Mellin National Coord. Phone: 208-387-5381
Ordered By: Joseph Johndreau	A Number: A-28	Aircraft/Scanner System: N144Z/Phoenix	Pilots/Techs: Johnson/Lowery/Kuenzi
IRIN Comments on imagery: Orthorectification very good. Series of striations across the imagery on the right side. Did not interfere to much with ability to interpret the image.		Weather at time of flight: Clear	Flight Objective: Map Heat Perimeter, Intense Heat, Scattered Heat and Isolated Heat.
Date and Time Imagery Received by Interpreter: 8/12/15 @ 0218 MDT		Type of media for final product: Shapefiles (.zip), pdf maps x 3, IRIN log, KMZ file	
Date and Time Products Delivered to Incident: 8/12/15 @ 0600 MDT		Digital files sent to: ftp://ftp.nifc.gov/incident_specific_data/pacific_nw/2015_Incidents_Oregon/NationalCrkComplex/IR/20150812	
Comments /notes on tonight's mission and this interpretation: Started with previous night's (8/11/15) IR perimeter. May want to extend the scan box to the east to -122 12 Crescent Fire – Fire continues to be very active on the north end. There was significant growth. Lots intense heat and scattered heat across the upper third of the fire area. Scattered heat throughout the center portion. Mainly isolated heat sources in the southern and oldest part of the fire. There continues to be a creeping edge on the southeast flank off of Crescent Ridge. There are two unburned island of fuel in the fire. Suspect that the northern one will burn over during that day. National Fire – No perimeter growth. Eight isolated heat sources observed within the burn area. A few are close to the perimeter.			

National Creek Complex IR Legend


- Isolated Heat
- Heat Perimeter
- Intense Heat
- Scattered Heat
- Burn Area





**National Creek Complex
OR-RSF-000836: IR Map
1:24,000**

Infrared Map - 08/12/2015
 Imagery Date - 08/12/2015
 Imagery Time - 0112 PDT
 Interpreted Complex Total Acres - 2,020 acres
 Crescent - 1,901 acres
 National Creek - 119 acres
 Change in Heat Perimeter for Complex - 1,051 acres
 Since Last IR Perimeter
 IRIN - Chad Horman



Miles
0 0.2 0.4 0.8