

National Creek Complex

OR-RSF-000836
 Crescent Fire: 953 acres
 National Fire: 119 acres

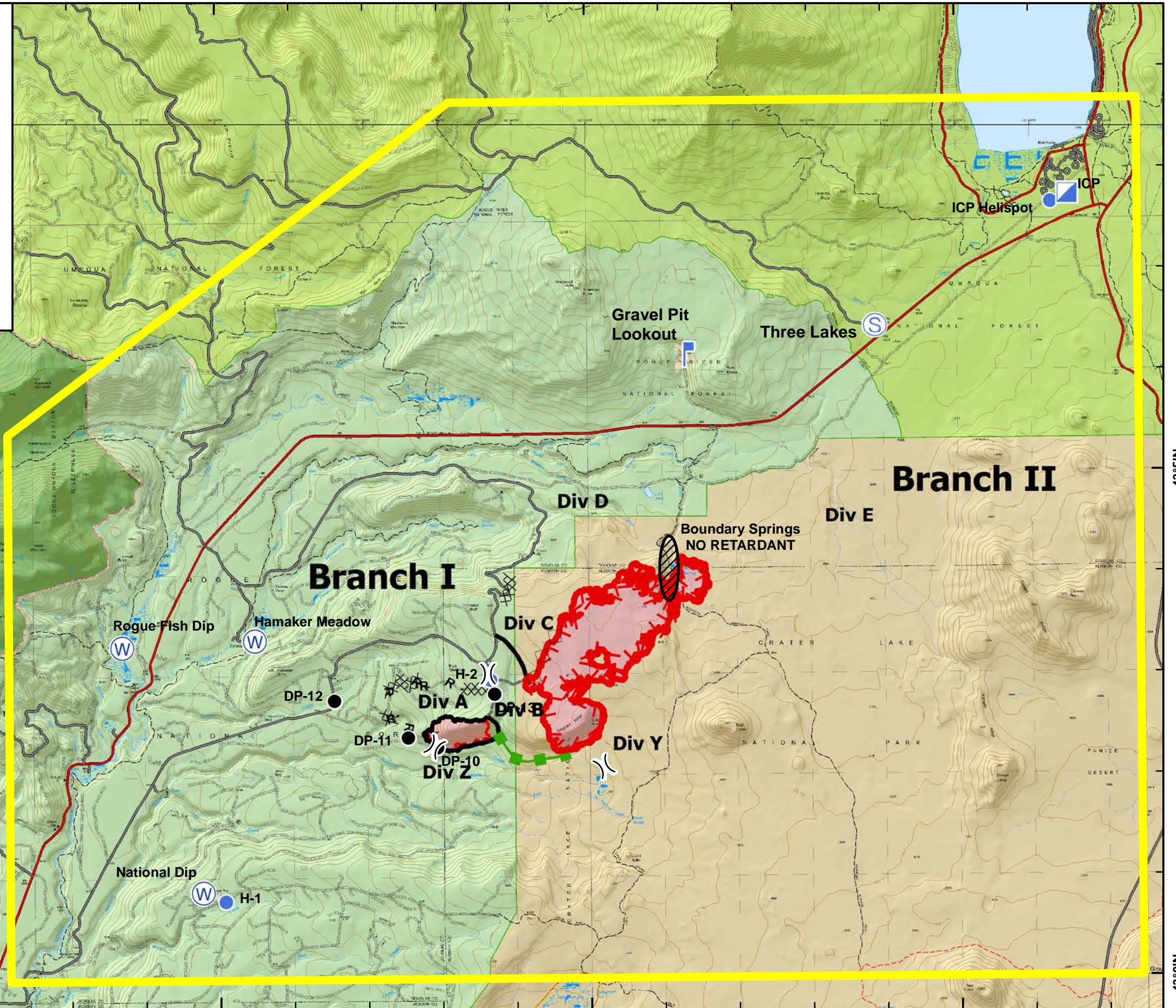
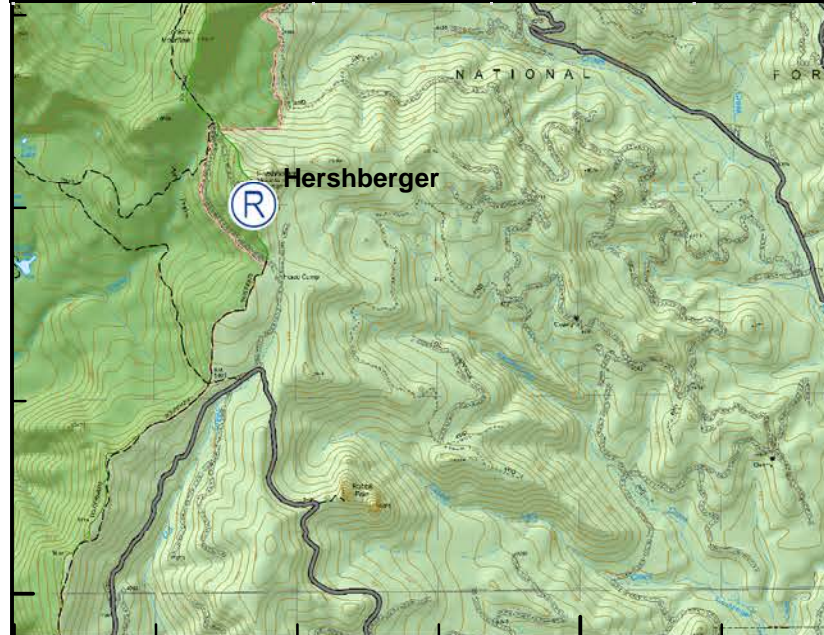
Air Operations Map
 August 11, 2015

- TFR
- IR Perimeter
8/10/15 @ 2004
- Completed Line
- Completed Dozer Line
- Access Routes
- Helispot
- Drop Point
- W Water Source
- R Repeater
- S Staging Area
- └ Lookout



GKD August 11, 2015 2130

| Name | Latitude | Longitude | Elevation |
|----------------------|---------------|----------------|-----------|
| Prospect Helibase | 42° 44.555' N | 122° 29.338' W | 2558 |
| Hamaker Meadow | 43° 3.36' N | 122° 19.509' W | 4002 |
| National Dip | 43° 0.871' N | 122° 20.228' W | 4638 |
| Rogue Fish Dip | 43° 3.3' N | 122° 21.3' W | 3920 |
| Polebridge Dip | 42° 50.703' N | 122° 9.022' W | 5961 |
| H-1 | 43° 0.782' N | 122° 19.925' W | 4638 |
| H-2 | 43° 2.959' N | 122° 16.336' W | 5507 |
| ICP Helispot | 43° 7.658' N | 122° 8.726' W | 5205 |
| ICP | 43° 7.741' N | 122° 8.491' W | 5209 |
| DP-10 | 43° 2.295' N | 122° 17.053' W | 4700 |
| DP-11 | 43° 2.394' N | 122° 17.445' W | 4636 |
| DP-12 | 43° 2.763' N | 122° 18.439' W | 4490 |
| DP-13 | 43° 2.818' N | 122° 16.278' W | 5487 |
| Hershberger Repeater | 43° 2.007' N | 122° 27.286' W | 6202 |
| Watchman Repeater | 42° 56.577' N | 122° 10.345' W | 8003 |



122°25'W

122°20'W

122°15'W

122°10'W

43°5'N

43°5'N

43°0'N

43°0'N