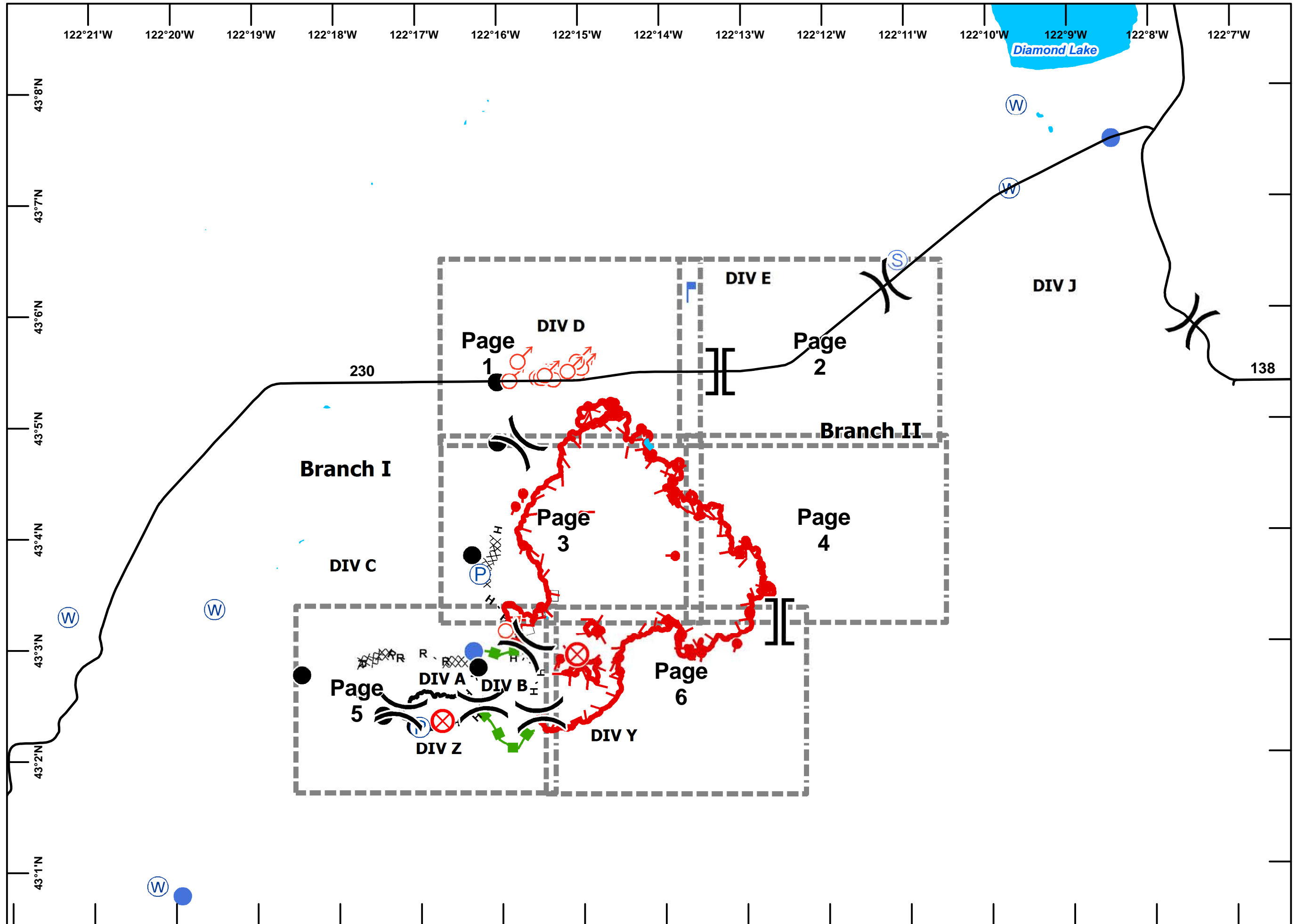
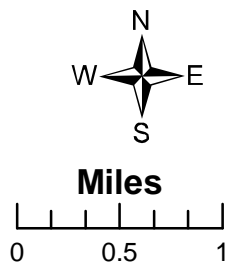


National Complex  
OR-RSF-000836  
August 14, 2015  
Day Shift  
NAD 83 Datum  
2,971 Acres

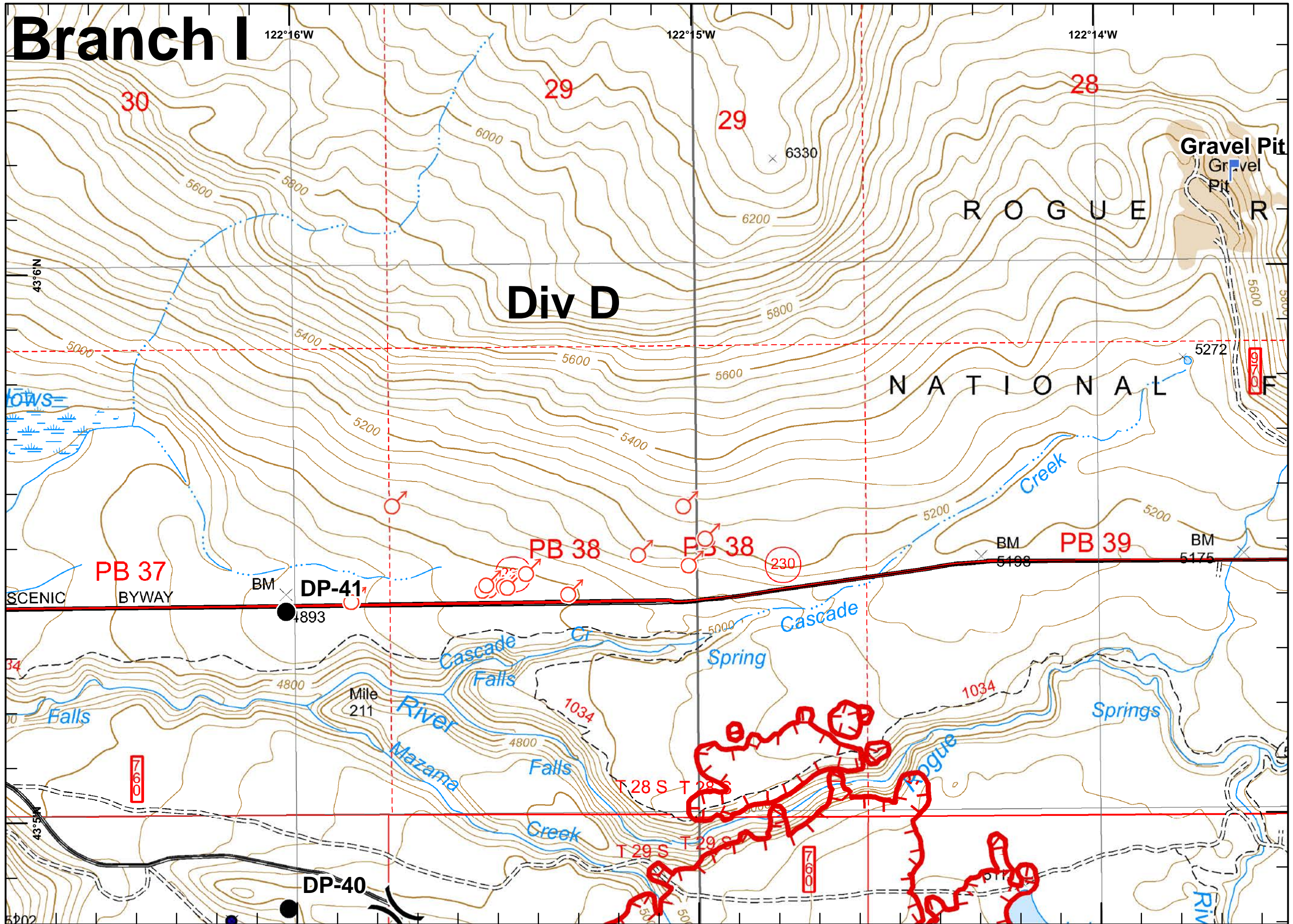
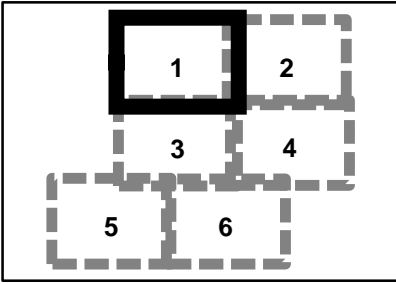


Click Code  
For Additional Maps

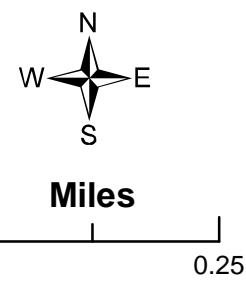
 Index Grid







- Division
- Drop Point
- Lookout
- Spot Fire
- Uncontrolled Fire Edge

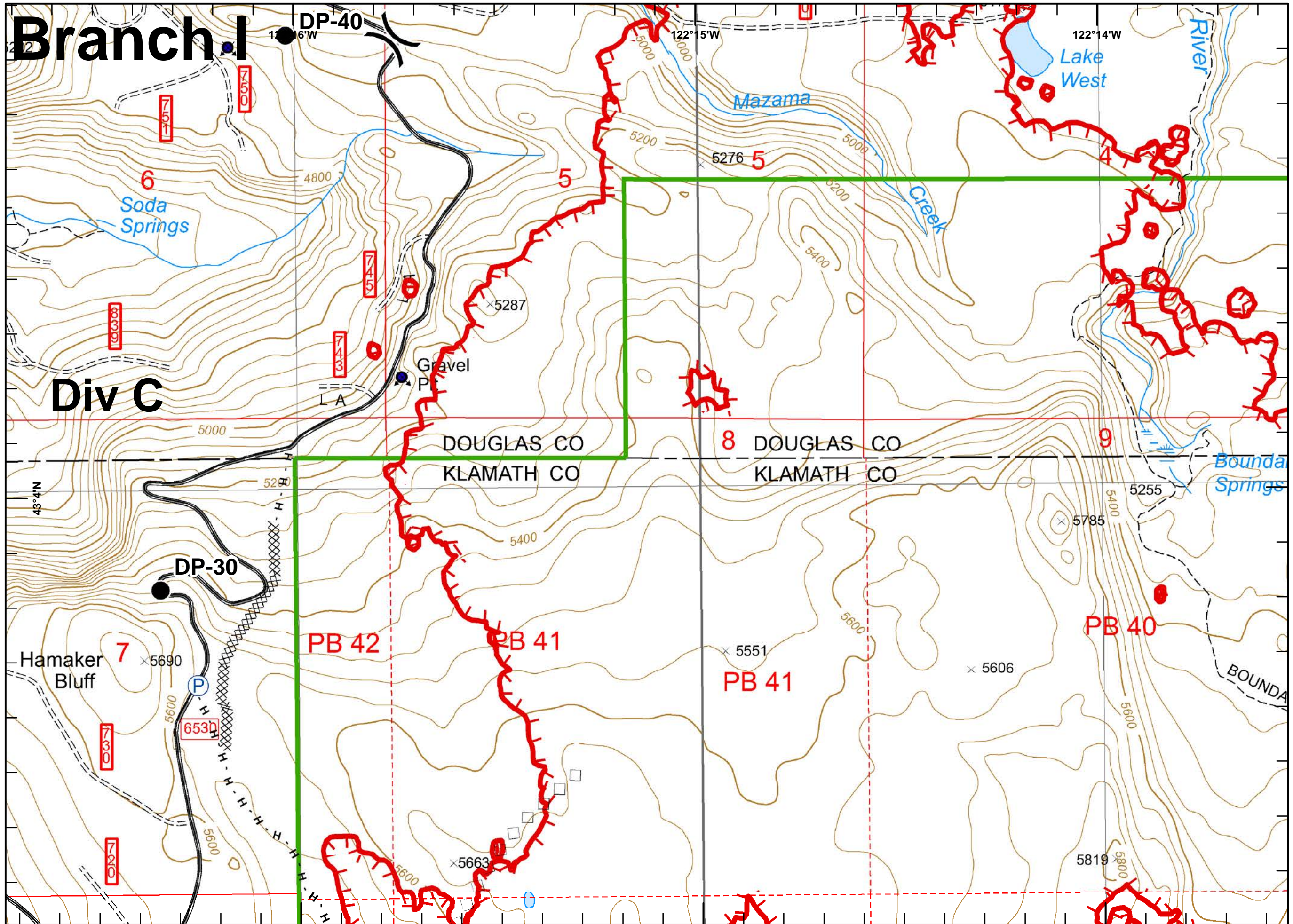
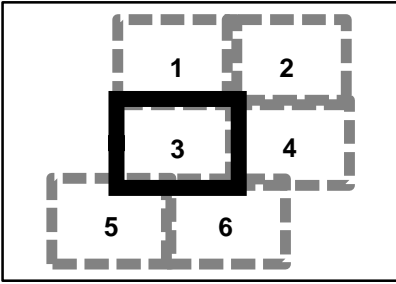


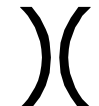




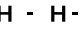

DAA  
 08/13/2015  
 2130

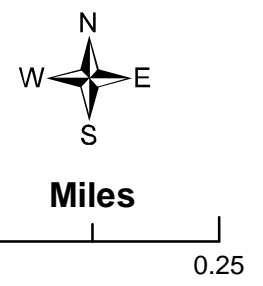




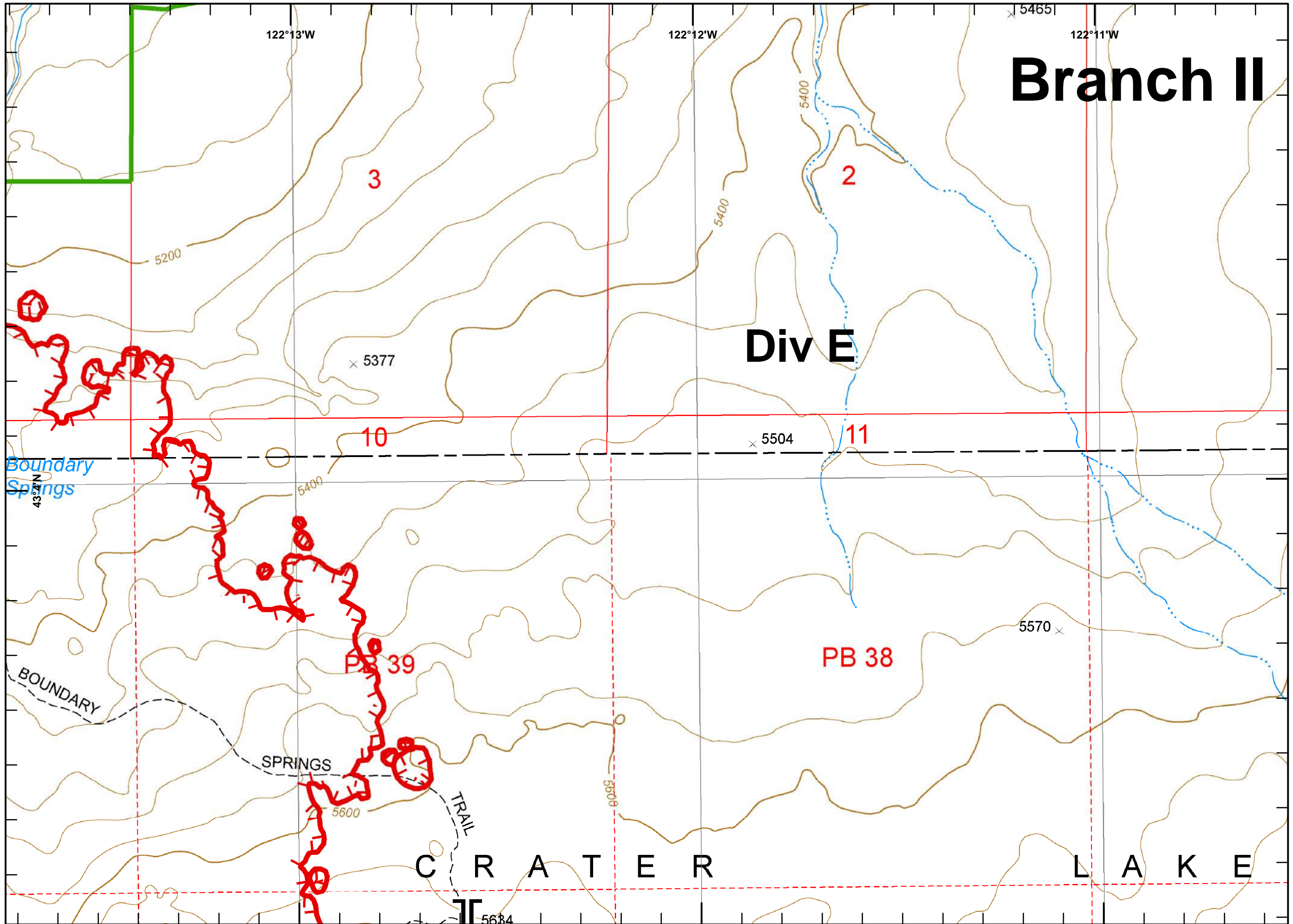
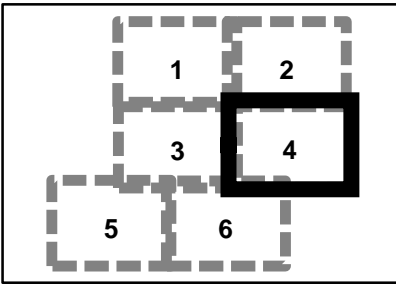






-  Division
-  Drop Point
-  Pump
-  Uncontrolled Fire Edge
-  Completed Dozer Line
-  Hand Line
-  Aerial Retardant Drop

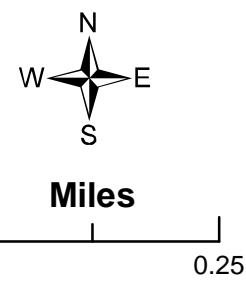




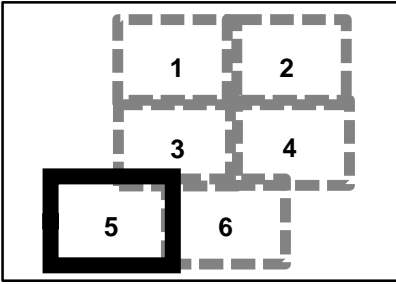


 Branch

 Uncontrolled Fire Edge



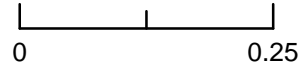




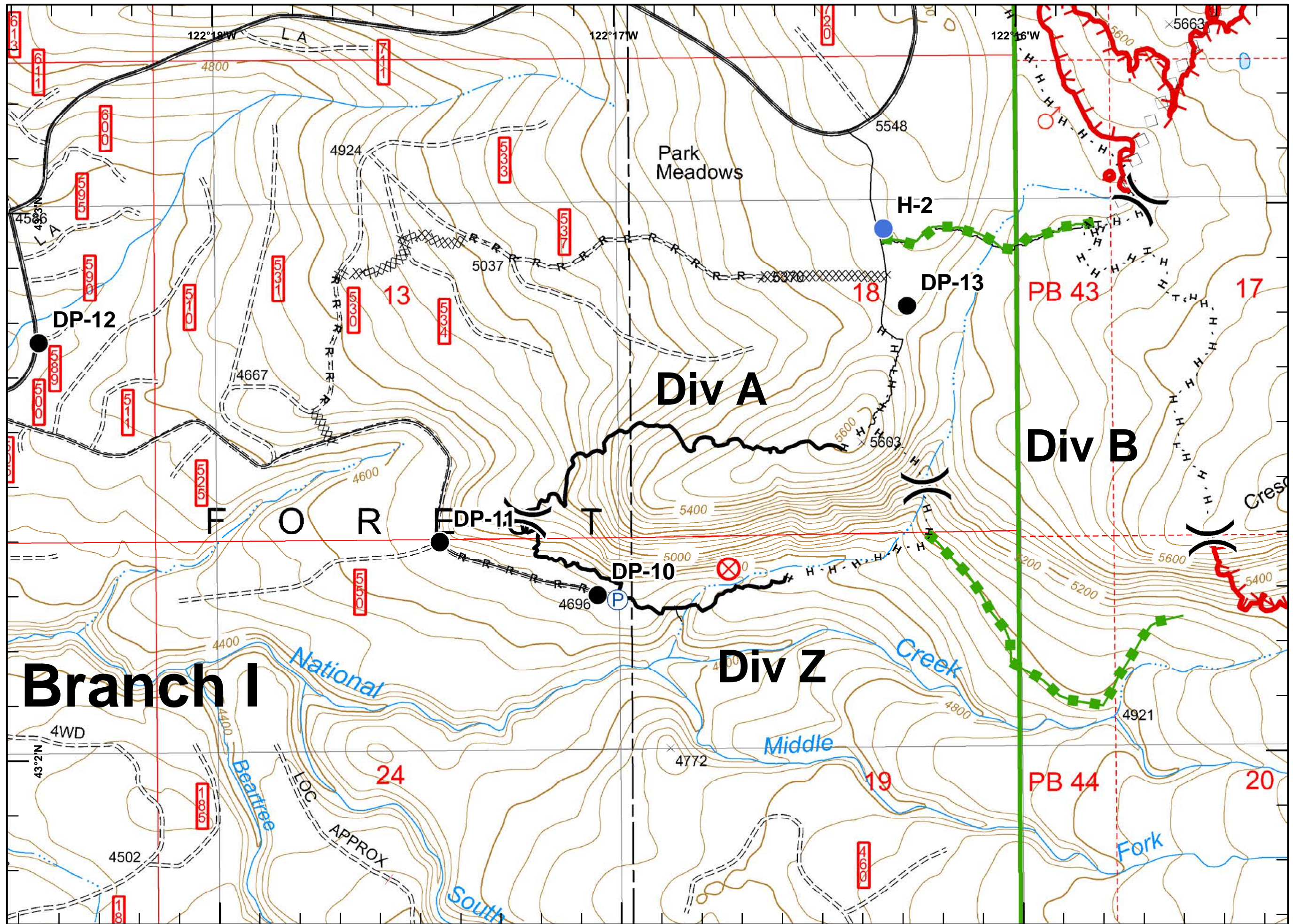
- Division
- Drop Point
- Fire Origin
- Helispot
- Pump
- Spot Fire
- Uncontrolled Fire Edge
- Completed Dozer Line
- Completed Line
- Hand Line
- Road as Completed Line
- Escape Route
- Aerial Retardant Drop



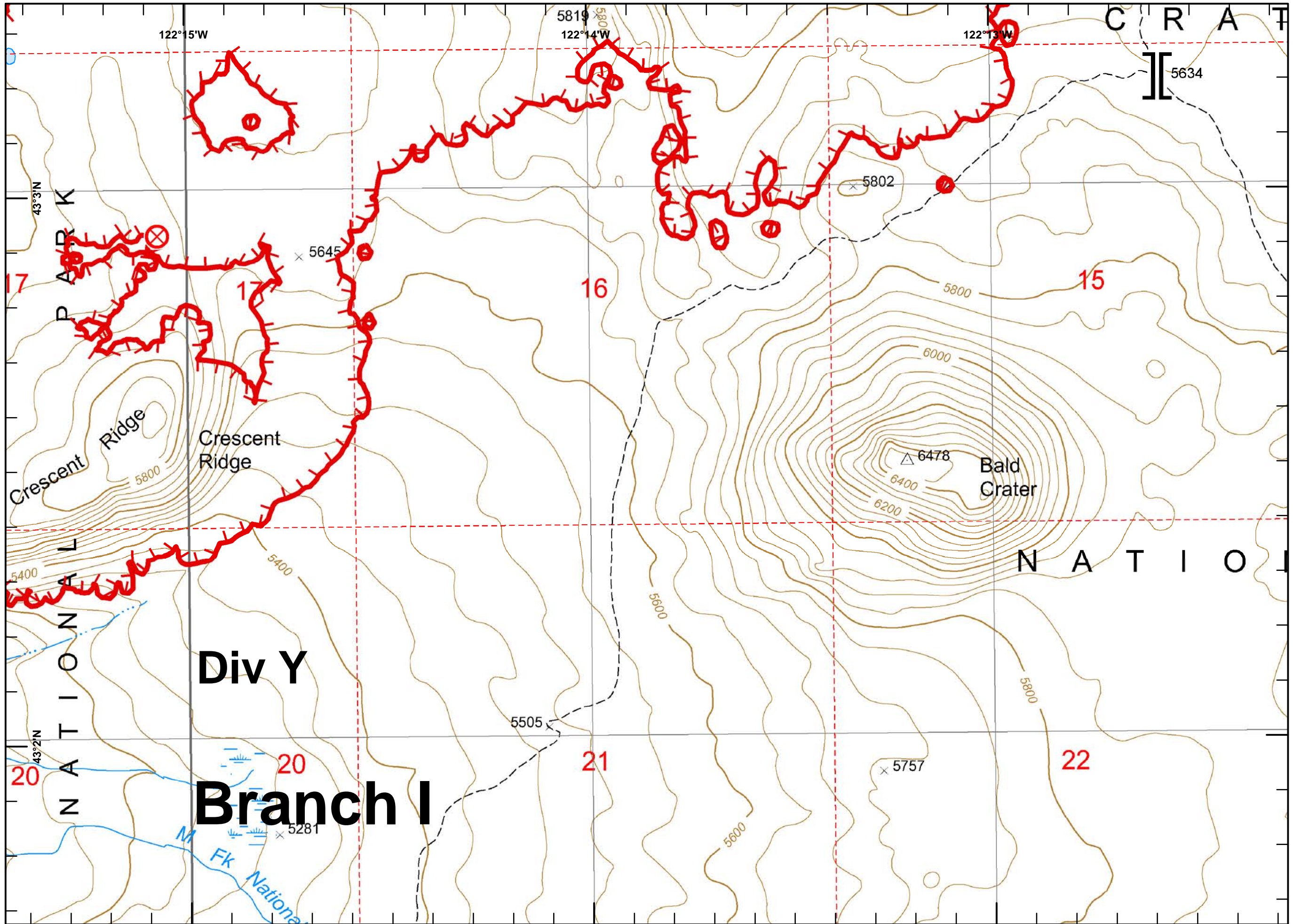
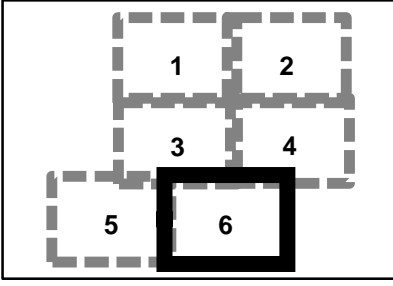
Miles



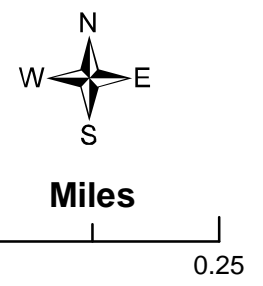
DAA  
 08/13/2015  
 2130



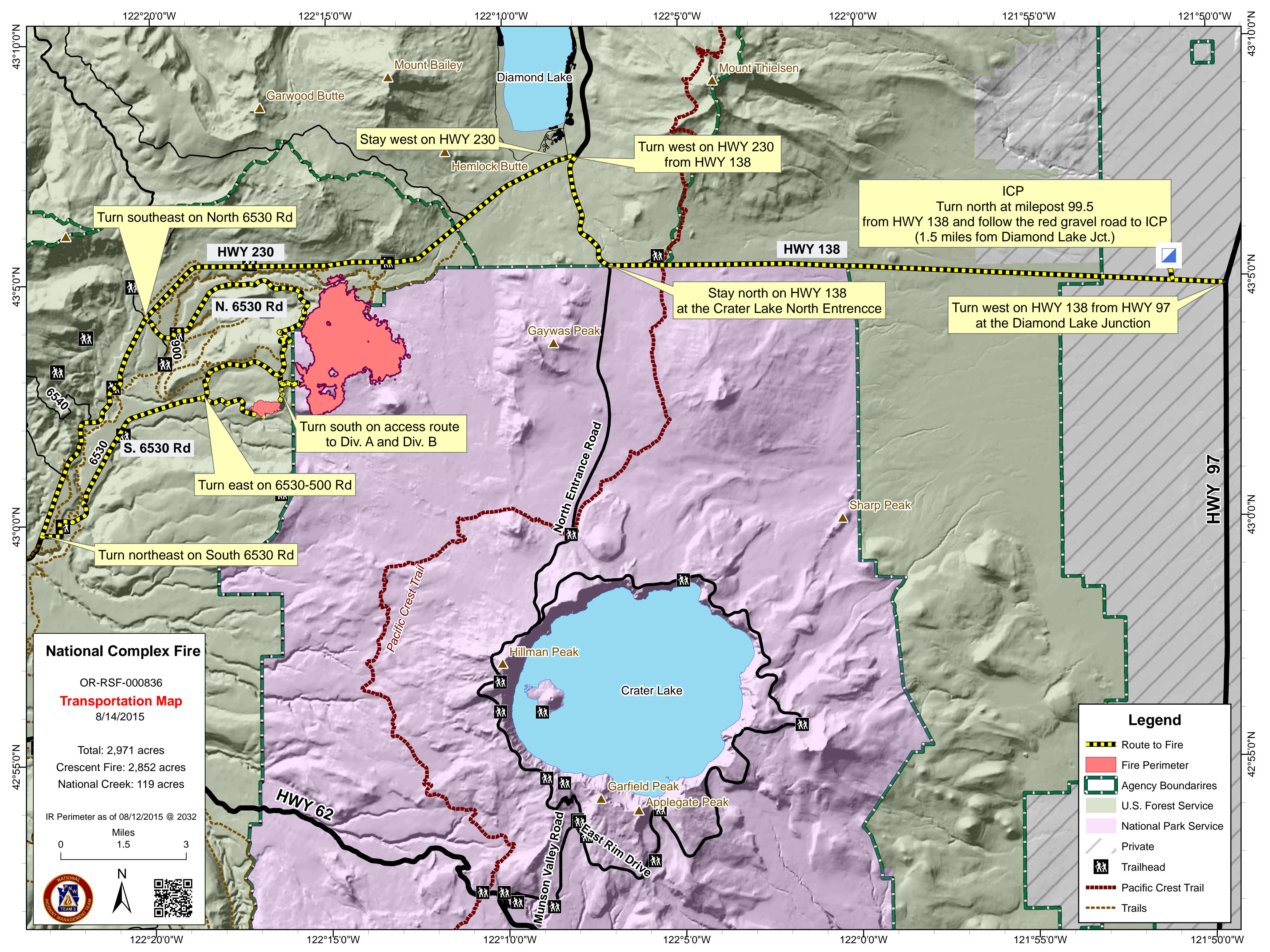




- Branch
- Fire Origin
- Uncontrolled Fire Edge





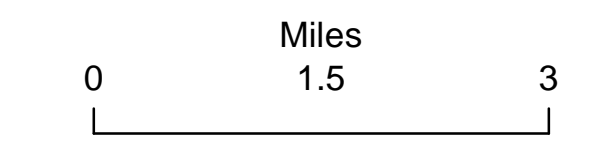


**National Complex Fire**

OR-RSF-000836  
**Transportation Map**  
 8/14/2015

Total: 2,971 acres  
 Crescent Fire: 2,852 acres  
 National Creek: 119 acres

IR Perimeter as of 08/12/2015 @ 2032



**Legend**

- Route to Fire
- Fire Perimeter
- Agency Boundaries
- U.S. Forest Service
- National Park Service
- Private
- Trailhead
- Pacific Crest Trail
- Trails

Turn southeast on North 6530 Rd

Stay west on HWY 230

Turn west on HWY 230 from HWY 138

ICP  
 Turn north at milepost 99.5 from HWY 138 and follow the red gravel road to ICP (1.5 miles from Diamond Lake Jct.)

Stay north on HWY 138 at the Crater Lake North Entrance

Turn west on HWY 138 from HWY 97 at the Diamond Lake Junction

Turn south on access route to Div. A and Div. B

Turn east on 6530-500 Rd

Turn northeast on South 6530 Rd

HWY 230

HWY 138

HWY 97

HWY 62

N. 6530 Rd

S. 6530 Rd

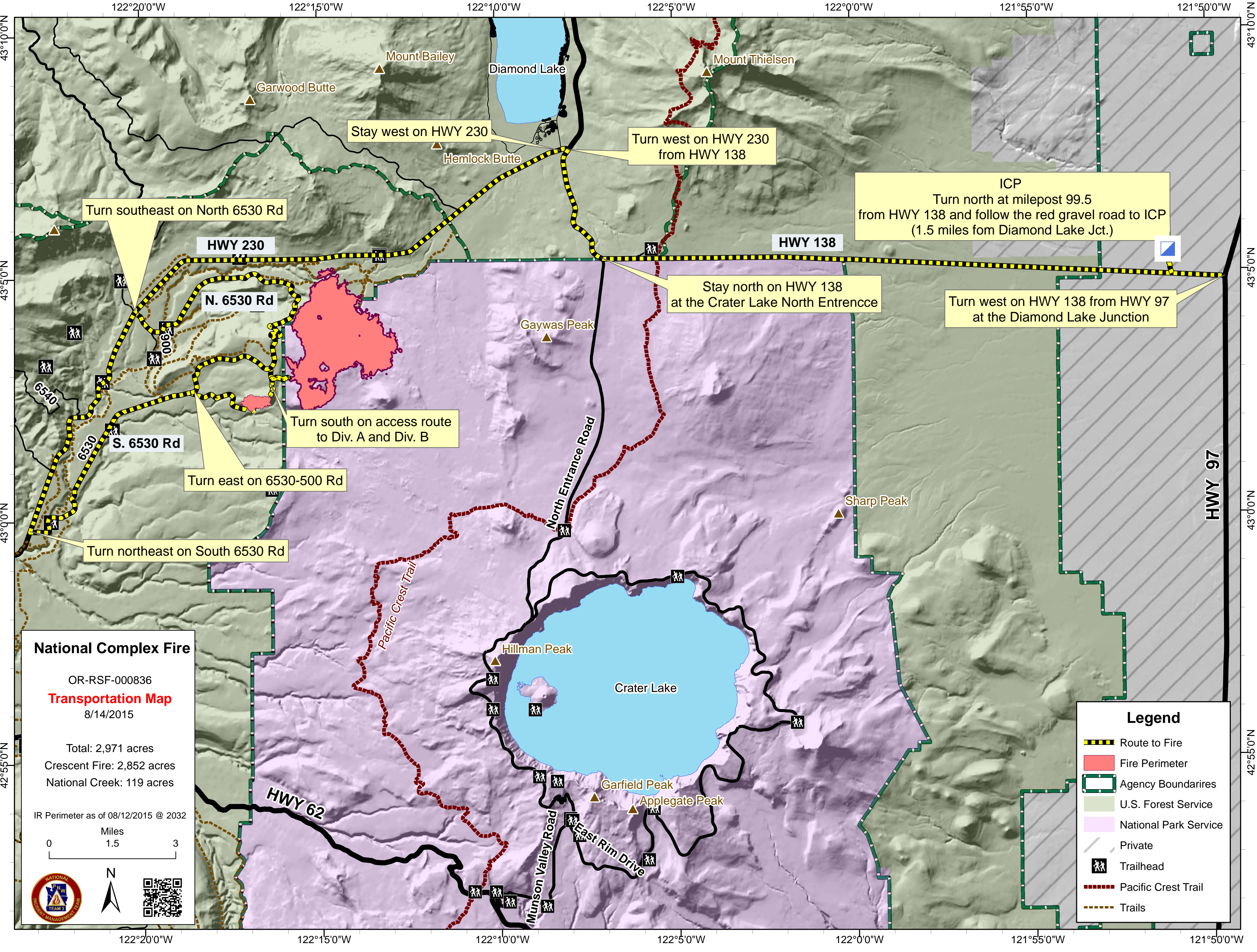
North Entrance Road

Munson Valley Road

East Rim Drive

Pacific Crest Trail

122°20'0"W 122°15'0"W 122°10'0"W 122°5'0"W 122°0'0"W 121°55'0"W 121°50'0"W



43°10'0"N  
43°5'0"N  
43°0'0"N  
42°55'0"N

43°10'0"N  
43°5'0"N  
43°0'0"N  
42°55'0"N