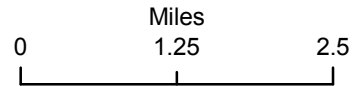


122°30'W 122°25'W 122°20'W 122°15'W 122°10'W 122°5'W

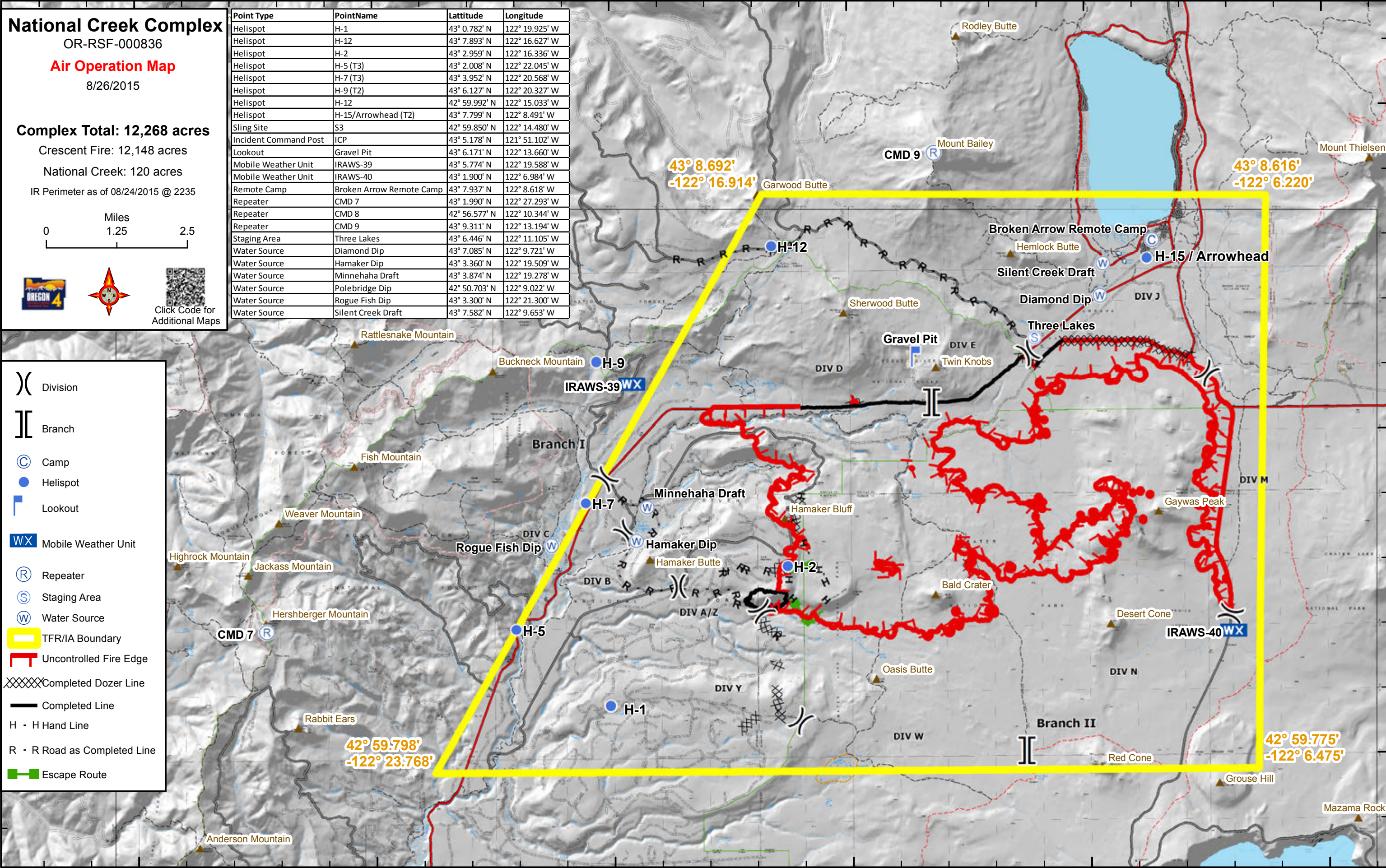
National Creek Complex
 OR-RSF-000836
Air Operation Map
 8/26/2015

Complex Total: 12,268 acres
 Crescent Fire: 12,148 acres
 National Creek: 120 acres
 IR Perimeter as of 08/24/2015 @ 2235



Point Type	PointName	Latitude	Longitude
Helispot	H-1	43° 0.782' N	122° 19.925' W
Helispot	H-12	43° 7.893' N	122° 16.627' W
Helispot	H-2	43° 2.959' N	122° 16.336' W
Helispot	H-5 (T3)	43° 2.008' N	122° 22.045' W
Helispot	H-7 (T3)	43° 3.952' N	122° 20.568' W
Helispot	H-9 (T2)	43° 6.127' N	122° 20.327' W
Helispot	H-12	42° 59.992' N	122° 15.033' W
Helispot	H-15/Arrowhead (T2)	43° 7.799' N	122° 8.491' W
Sling Site	S3	42° 59.850' N	122° 14.480' W
Incident Command Post	ICP	43° 5.178' N	121° 51.102' W
Lookout	Gravel Pit	43° 6.171' N	122° 13.660' W
Mobile Weather Unit	IRAWS-39	43° 5.774' N	122° 19.588' W
Mobile Weather Unit	IRAWS-40	43° 1.900' N	122° 6.984' W
Remote Camp	Broken Arrow Remote Camp	43° 7.937' N	122° 8.618' W
Repeater	CMD 7	43° 1.990' N	122° 27.293' W
Repeater	CMD 8	42° 56.577' N	122° 10.344' W
Repeater	CMD 9	43° 9.311' N	122° 13.194' W
Staging Area	Three Lakes	43° 6.446' N	122° 11.105' W
Water Source	Diamond Dip	43° 7.085' N	122° 9.721' W
Water Source	Hamaker Dip	43° 3.360' N	122° 19.509' W
Water Source	Minnehaha Draft	43° 3.874' N	122° 19.278' W
Water Source	Polebridge Dip	42° 50.703' N	122° 9.022' W
Water Source	Rogue Fish Dip	43° 3.300' N	122° 21.300' W
Water Source	Silent Creek Draft	43° 7.582' N	122° 9.653' W

- Division
- Branch
- Camp
- Helispot
- Lookout
- Mobile Weather Unit
- Repeater
- Staging Area
- Water Source
- TFR/IA Boundary
- Uncontrolled Fire Edge
- Completed Dozer Line
- Completed Line
- H - H Hand Line
- R - R Road as Completed Line
- Escape Route



43° 8.692'
-122° 16.914'

43° 8.616'
-122° 6.220'

42° 59.798'
-122° 23.768'

42° 59.775'
-122° 6.475'

122°30'W 122°25'W 122°20'W 122°15'W 122°10'W 122°5'W

43°10'N

43°5'N

43°0'N

43°10'N

43°5'N

43°0'N