

National Creek Complex

OR-RSF-000836

Information Map

8/28/2015

Complex Total: 13,211 acres

Crescent Fire: 13,091 acres

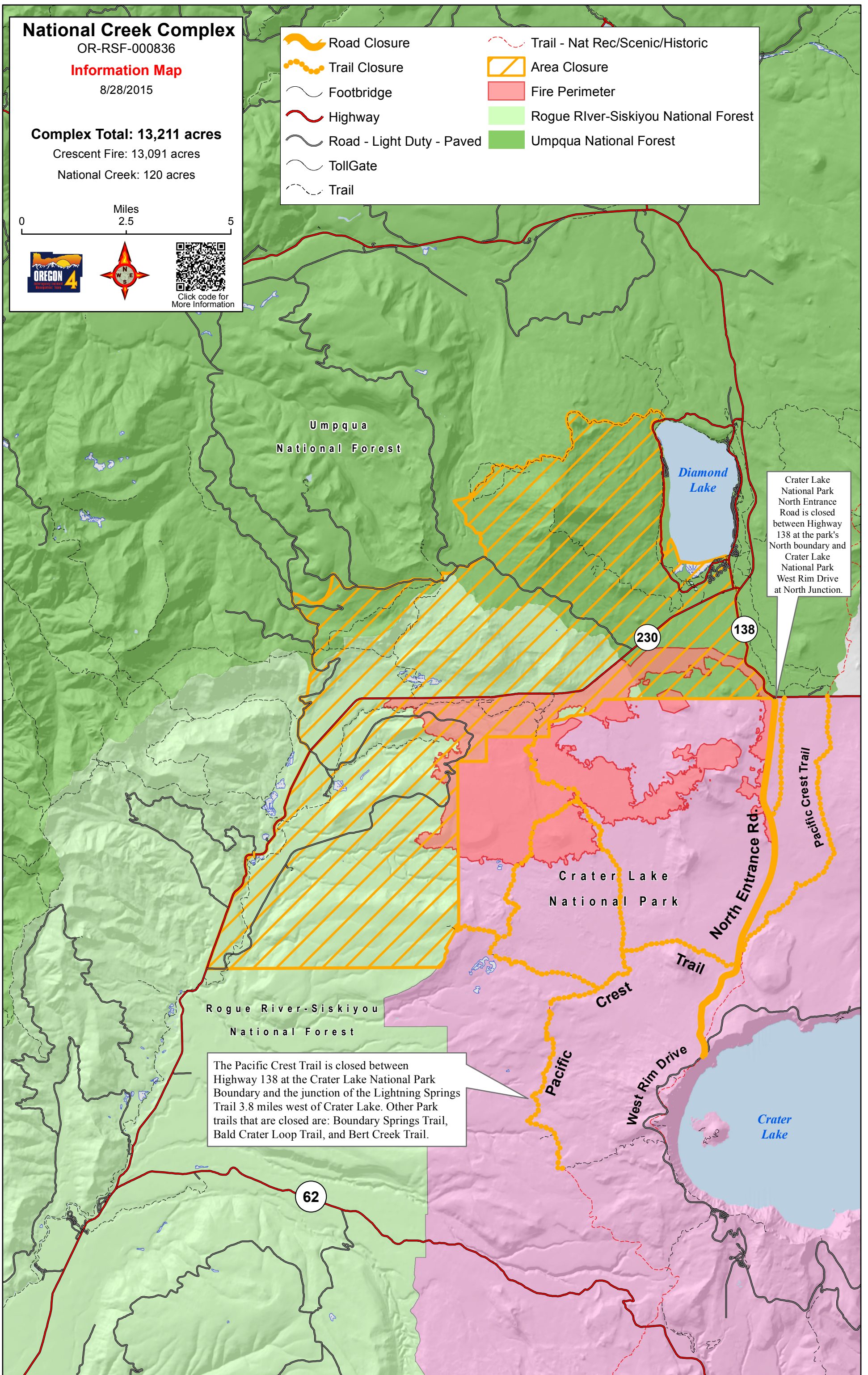
National Creek: 120 acres

0 Miles 2.5 5



Click code for More Information

- Road Closure
- Trail Closure
- Footbridge
- Highway
- Road - Light Duty - Paved
- TollGate
- Trail
- Trail - Nat Rec/Scenic/Historic
- Area Closure
- Fire Perimeter
- Rogue River-Siskiyou National Forest
- Umpqua National Forest



Crater Lake National Park North Entrance Road is closed between Highway 138 at the park's North boundary and Crater Lake National Park West Rim Drive at North Junction.

The Pacific Crest Trail is closed between Highway 138 at the Crater Lake National Park Boundary and the junction of the Lightning Springs Trail 3.8 miles west of Crater Lake. Other Park trails that are closed are: Boundary Springs Trail, Bald Crater Loop Trail, and Bert Creek Trail.