

National Creek Complex

OR-RSF-000836

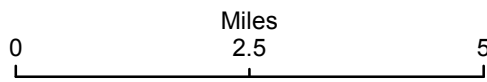
Information Map

8/28/2015

Complex Total: 13,211 acres

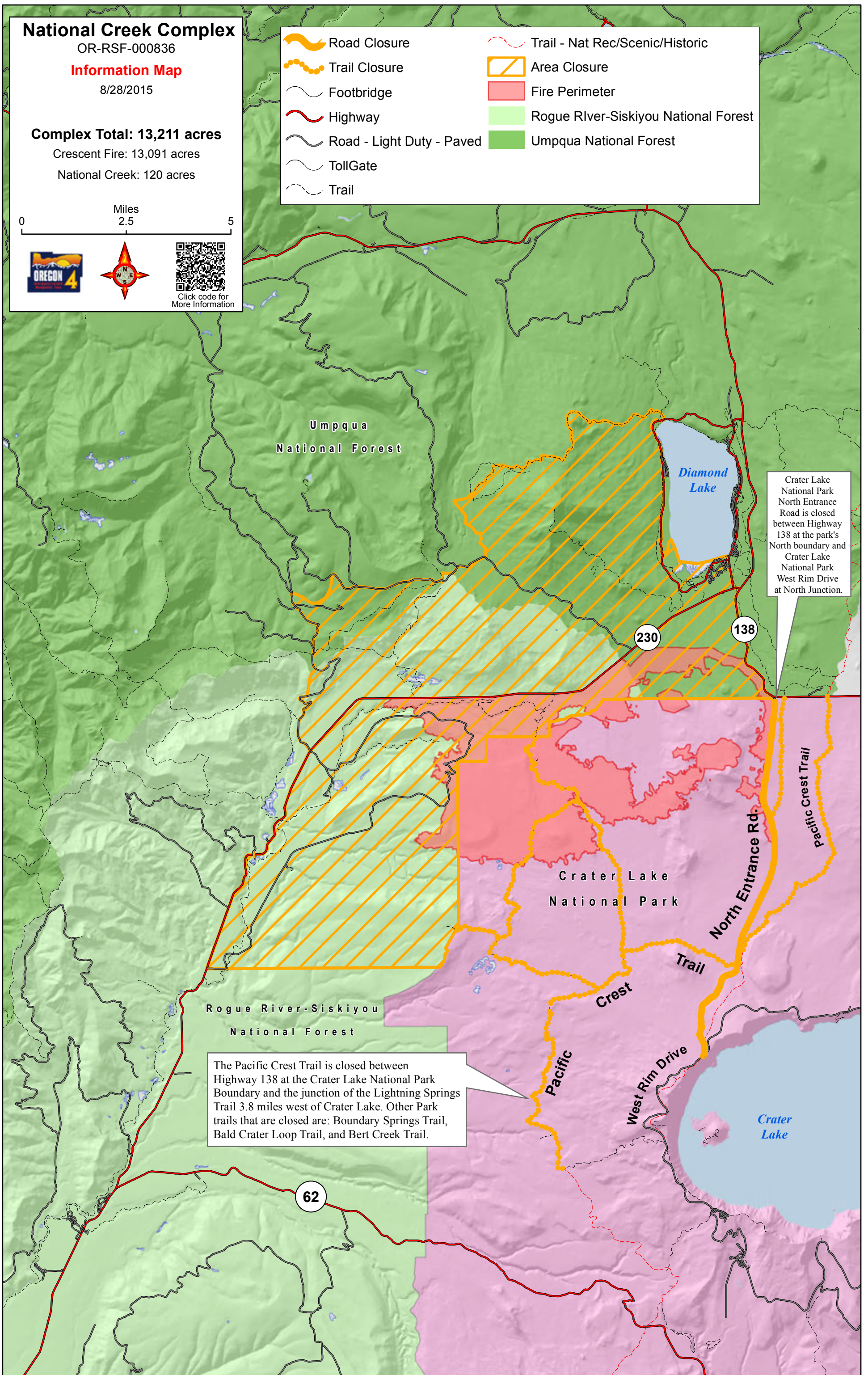
Crescent Fire: 13,091 acres

National Creek: 120 acres



Click code for More Information

- Road Closure
- Trail Closure
- Footbridge
- Highway
- Road - Light Duty - Paved
- TollGate
- Trail
- Trail - Nat Rec/Scenic/Historic
- Area Closure
- Fire Perimeter
- Rogue River-Siskiyou National Forest
- Umpqua National Forest



Umpqua National Forest

Diamond Lake

Crater Lake National Park North Entrance Road is closed between Highway 138 at the park's North boundary and Crater Lake National Park West Rim Drive at North Junction.

230

138

Crater Lake National Park

Rogue River-Siskiyou National Forest

The Pacific Crest Trail is closed between Highway 138 at the Crater Lake National Park Boundary and the junction of the Lightning Springs Trail 3.8 miles west of Crater Lake. Other Park trails that are closed are: Boundary Springs Trail, Bald Crater Loop Trail, and Bert Creek Trail.

North Entrance Rd.
Pacific Crest Trail
Crest Trail
West Rim Drive
Crater Lake

62