

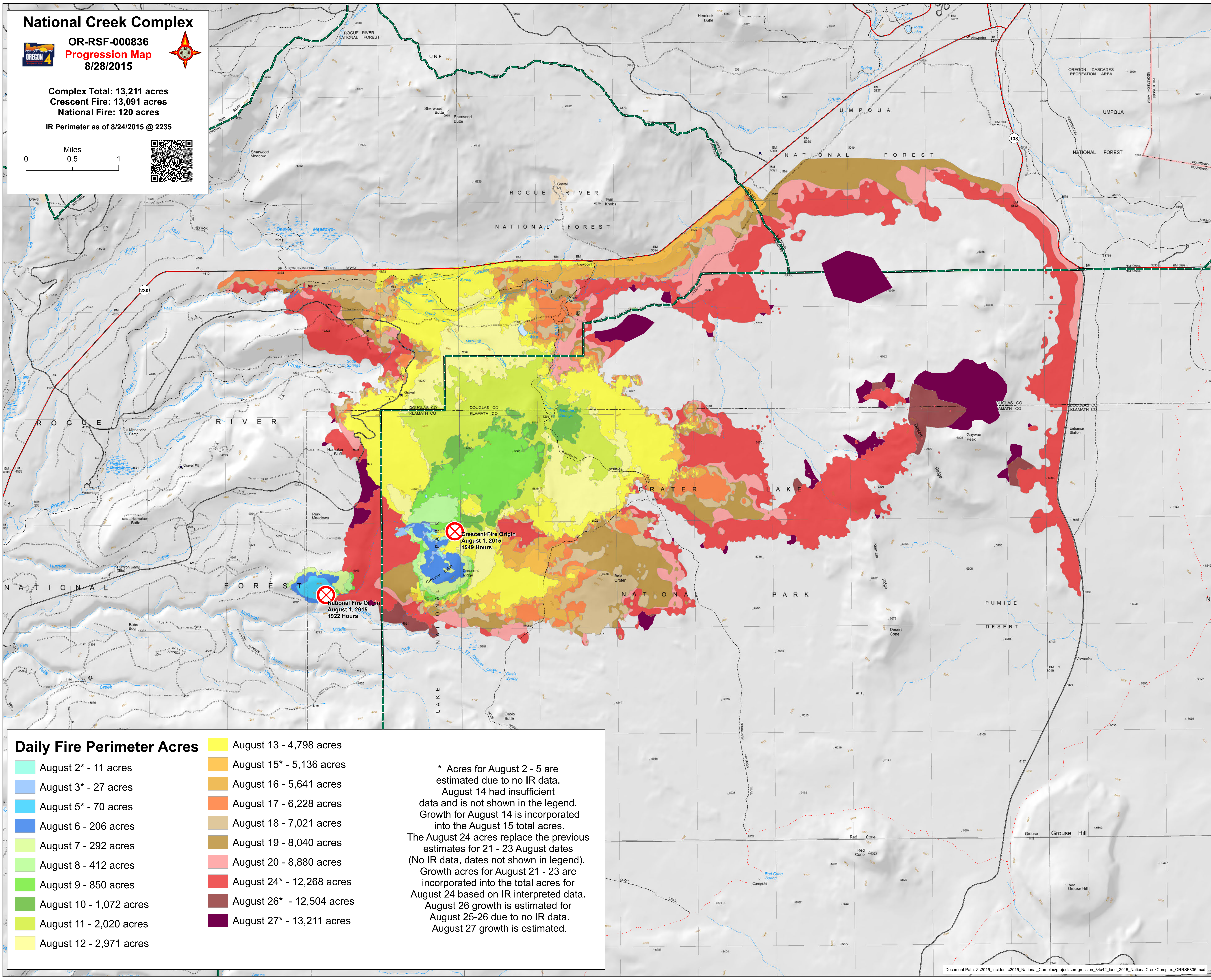
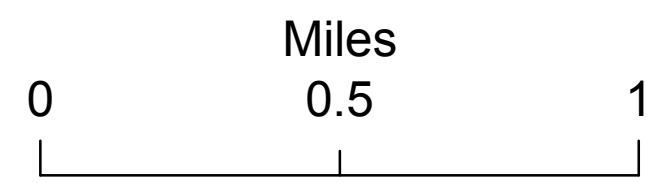
National Creek Complex



OR-RSF-000836
Progression Map
 8/28/2015



Complex Total: 13,211 acres
 Crescent Fire: 13,091 acres
 National Fire: 120 acres
 IR Perimeter as of 8/24/2015 @ 2235



National Fire Origin
 August 1, 2015
 1922 Hours

Crescent Fire Origin
 August 1, 2015
 1549 Hours

Daily Fire Perimeter Acres

- | | | | |
|--|-------------------------|--|---------------------------|
| | August 2* - 11 acres | | August 13 - 4,798 acres |
| | August 3* - 27 acres | | August 15* - 5,136 acres |
| | August 5* - 70 acres | | August 16 - 5,641 acres |
| | August 6 - 206 acres | | August 17 - 6,228 acres |
| | August 7 - 292 acres | | August 18 - 7,021 acres |
| | August 8 - 412 acres | | August 19 - 8,040 acres |
| | August 9 - 850 acres | | August 20 - 8,880 acres |
| | August 10 - 1,072 acres | | August 24* - 12,268 acres |
| | August 11 - 2,020 acres | | August 26* - 12,504 acres |
| | August 12 - 2,971 acres | | August 27* - 13,211 acres |

* Acres for August 2 - 5 are estimated due to no IR data. August 14 had insufficient data and is not shown in the legend. Growth for August 14 is incorporated into the August 15 total acres. The August 24 acres replace the previous estimates for 21 - 23 August dates (No IR data, dates not shown in legend). Growth acres for August 21 - 23 are incorporated into the total acres for August 24 based on IR interpreted data. August 26 growth is estimated for August 25-26 due to no IR data. August 27 growth is estimated.