



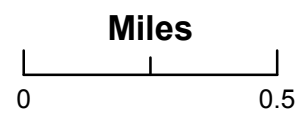
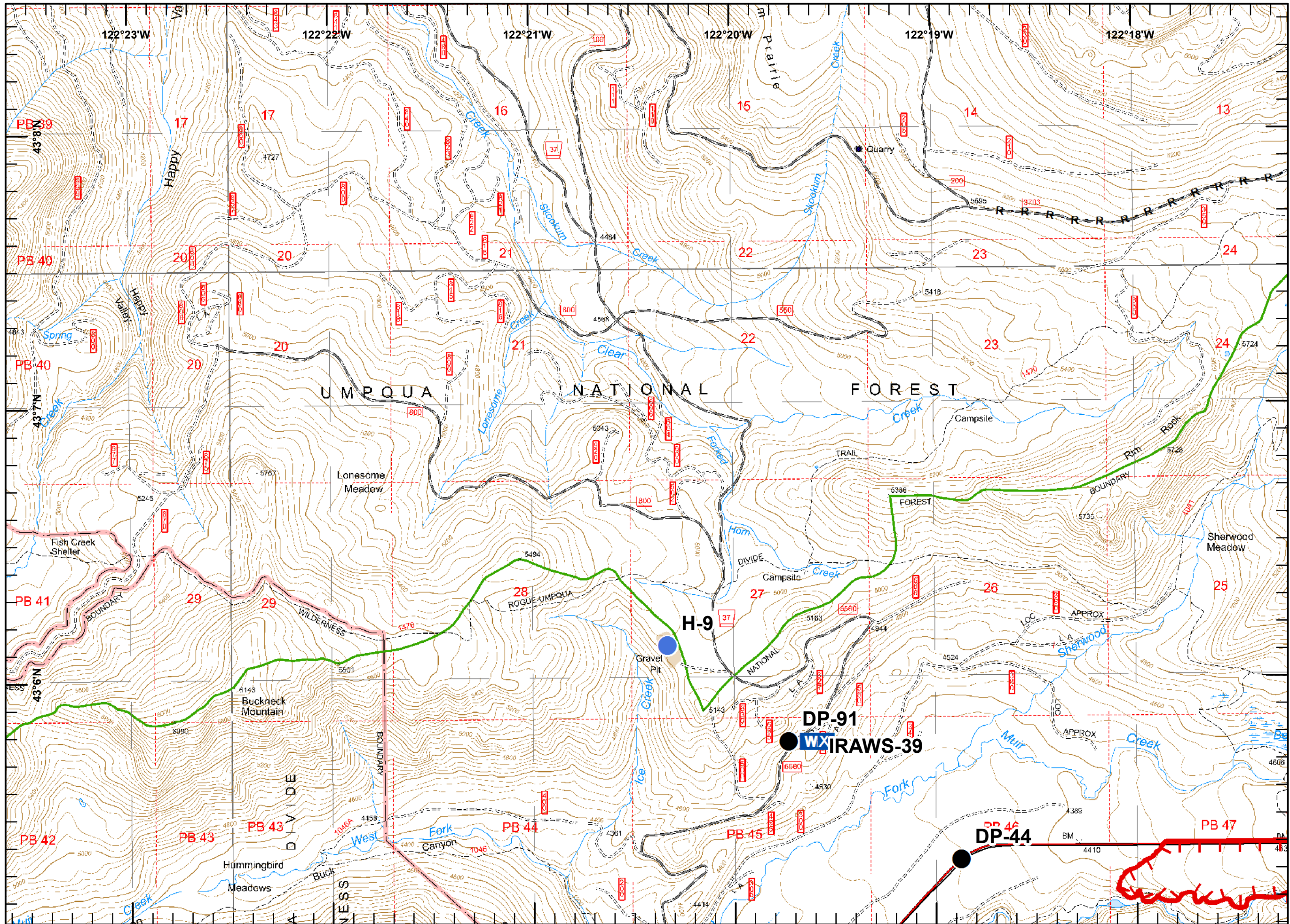
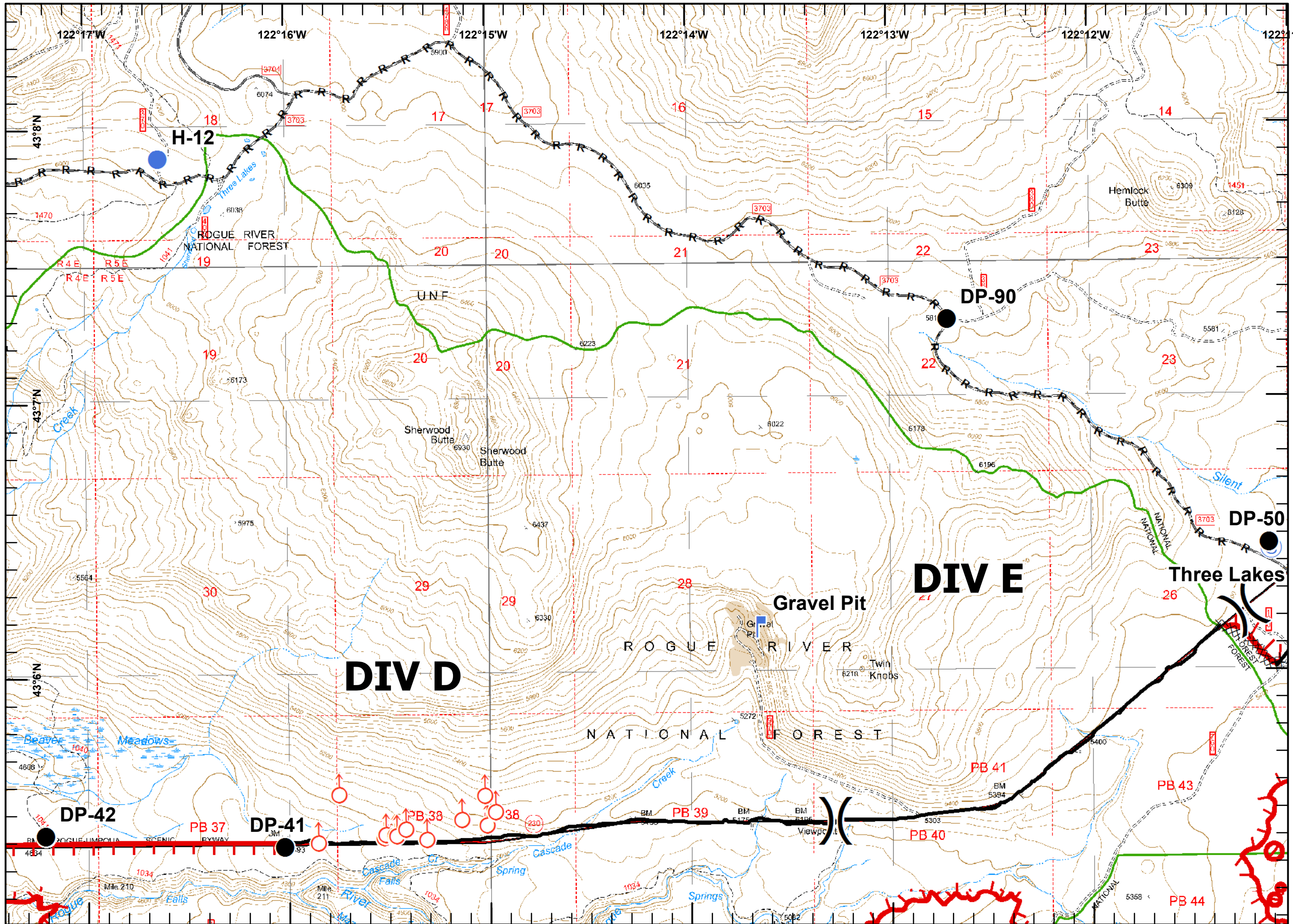
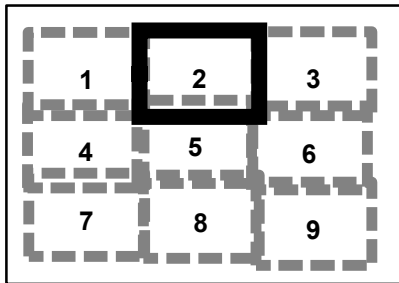


-  Drop Point
-  Helispot
-  Mobile Weather Unit
-  Uncontrolled Fire Edge
- R - R Road as Completed Line

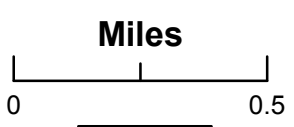


DAA  
08/21/2015  
2130

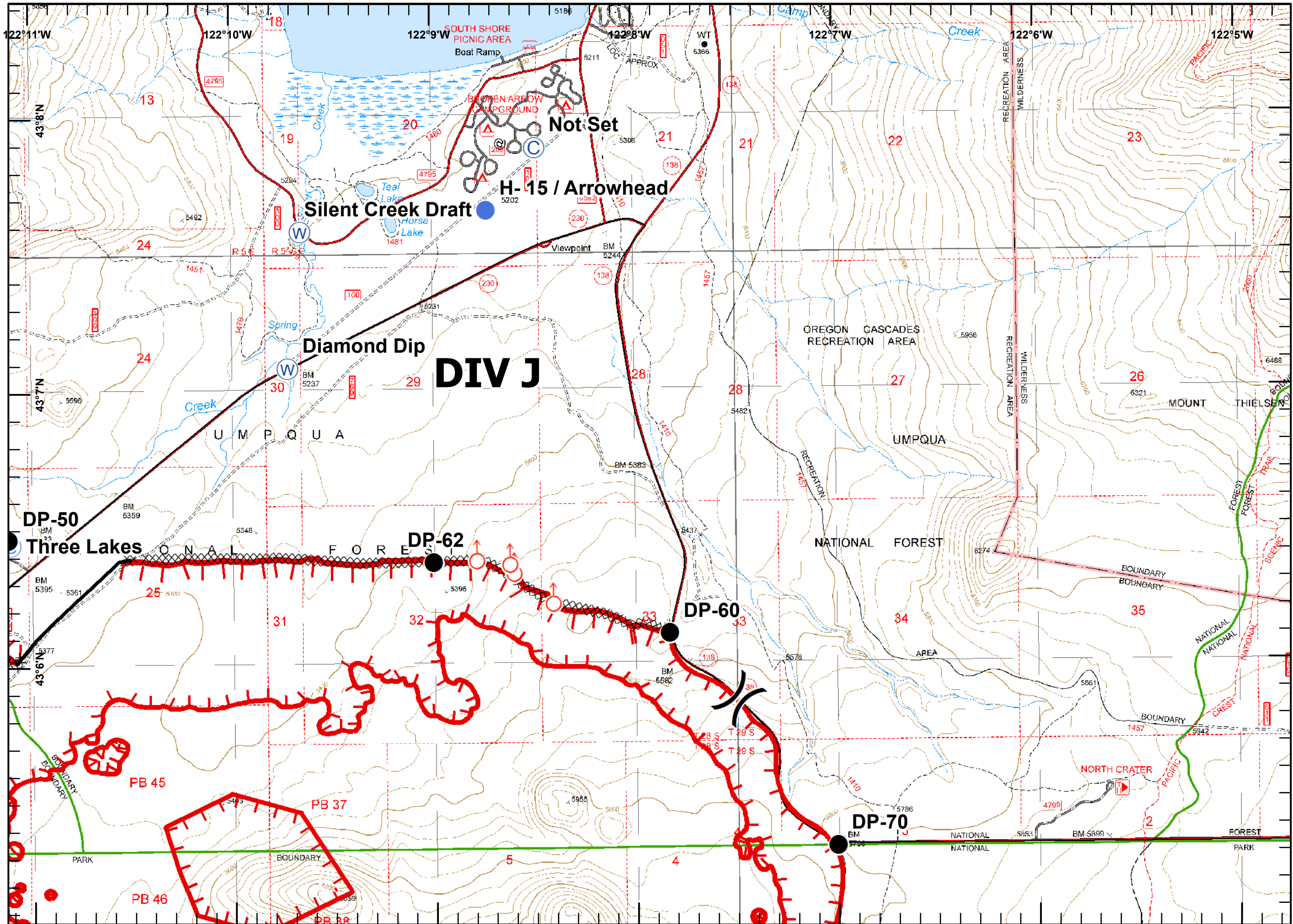
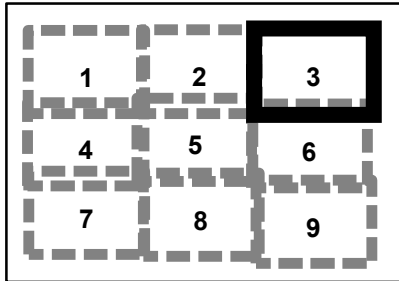




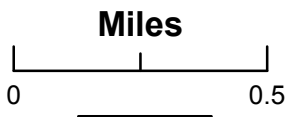
- Divide
- Drop Point
- Helispot
- Lookout
- Spot Fire
- Staging Area
- Uncontrolled Fire Edge
- Completed Dozer Line
- Completed Line
- R - R Road as Completed Line



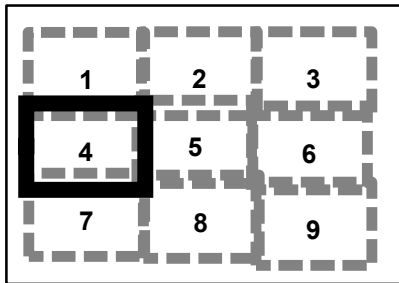
DAA  
08/21/2015  
2130



- Divide
- Camp
- Drop Point
- Helispot
- Spot Fire
- Staging Area
- Water Source
- Uncontrolled Fire Edge
- Completed Dozer Line
- Completed Line

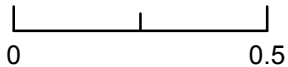


DAA  
 08/21/2015  
 2130

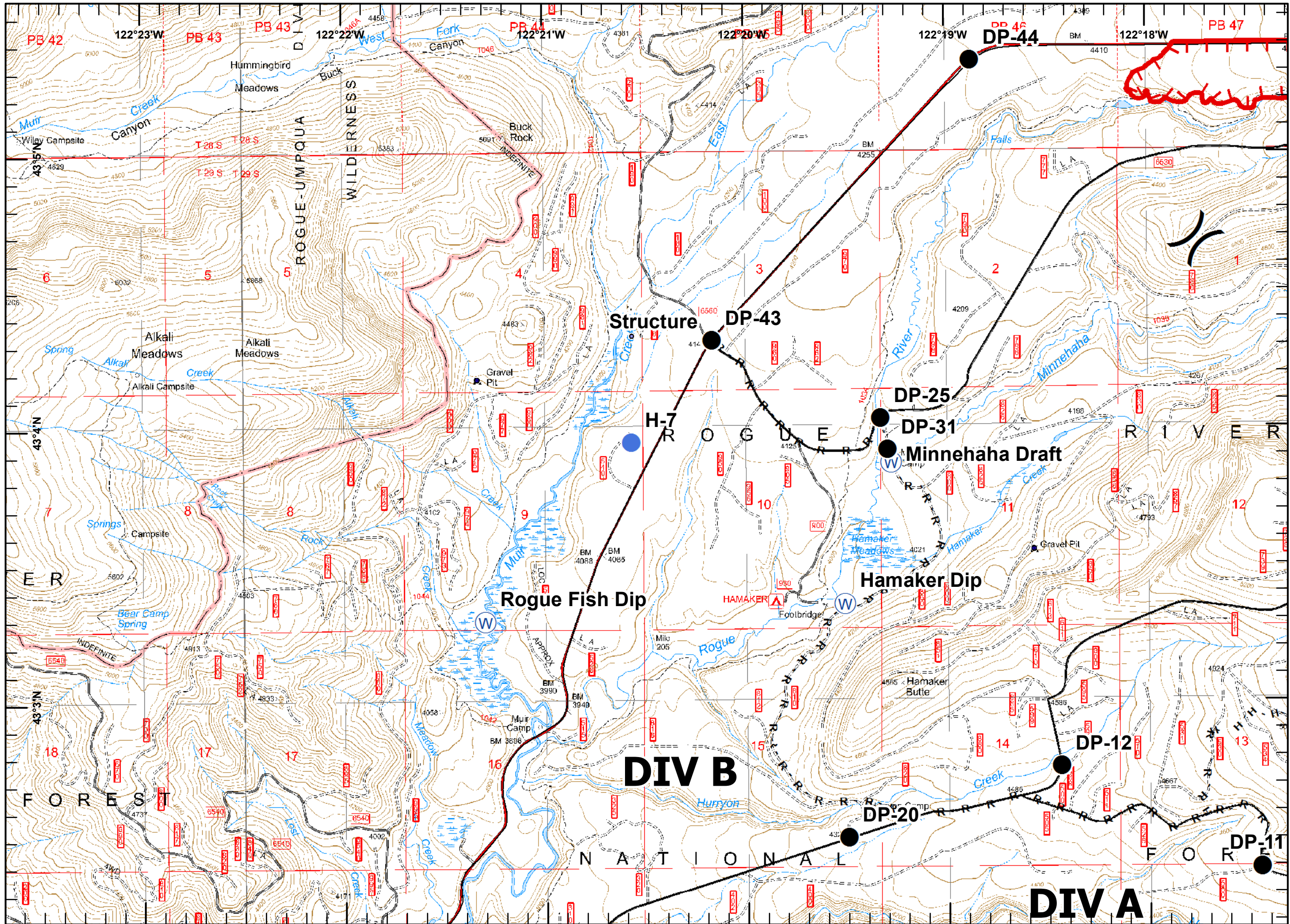


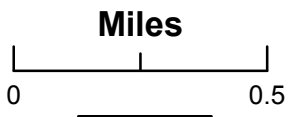
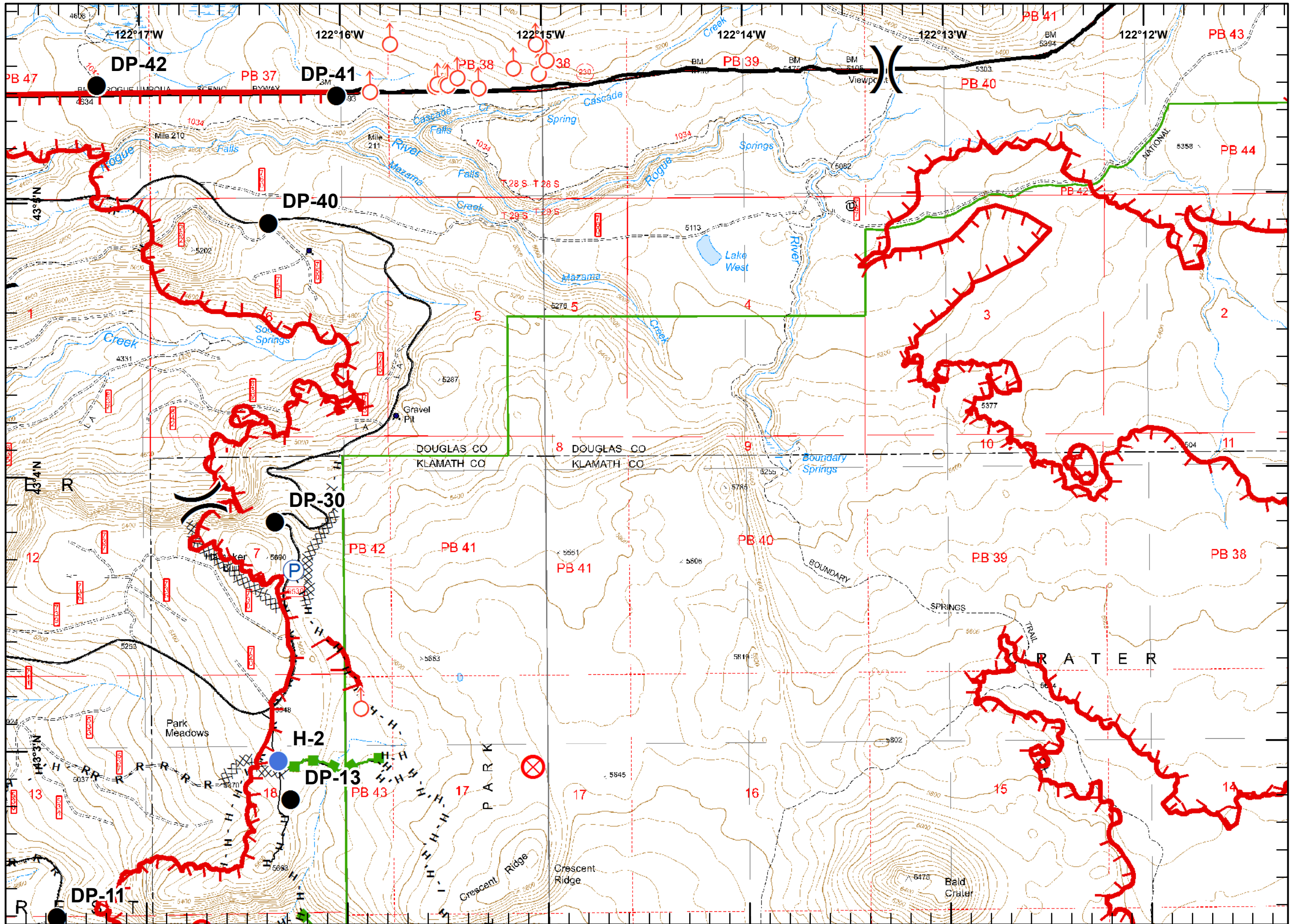
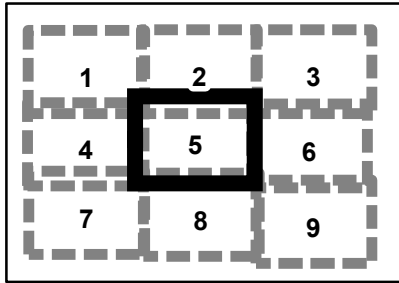
- Division
- Drop Point
- Helispot
- Water Source
- Other
- Uncontrolled Fire Edge
- H - H Hand Line
- R - R Road as Completed Line

Miles



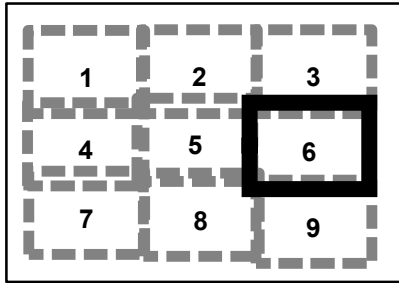
DAA  
08/21/2015  
2130

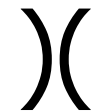




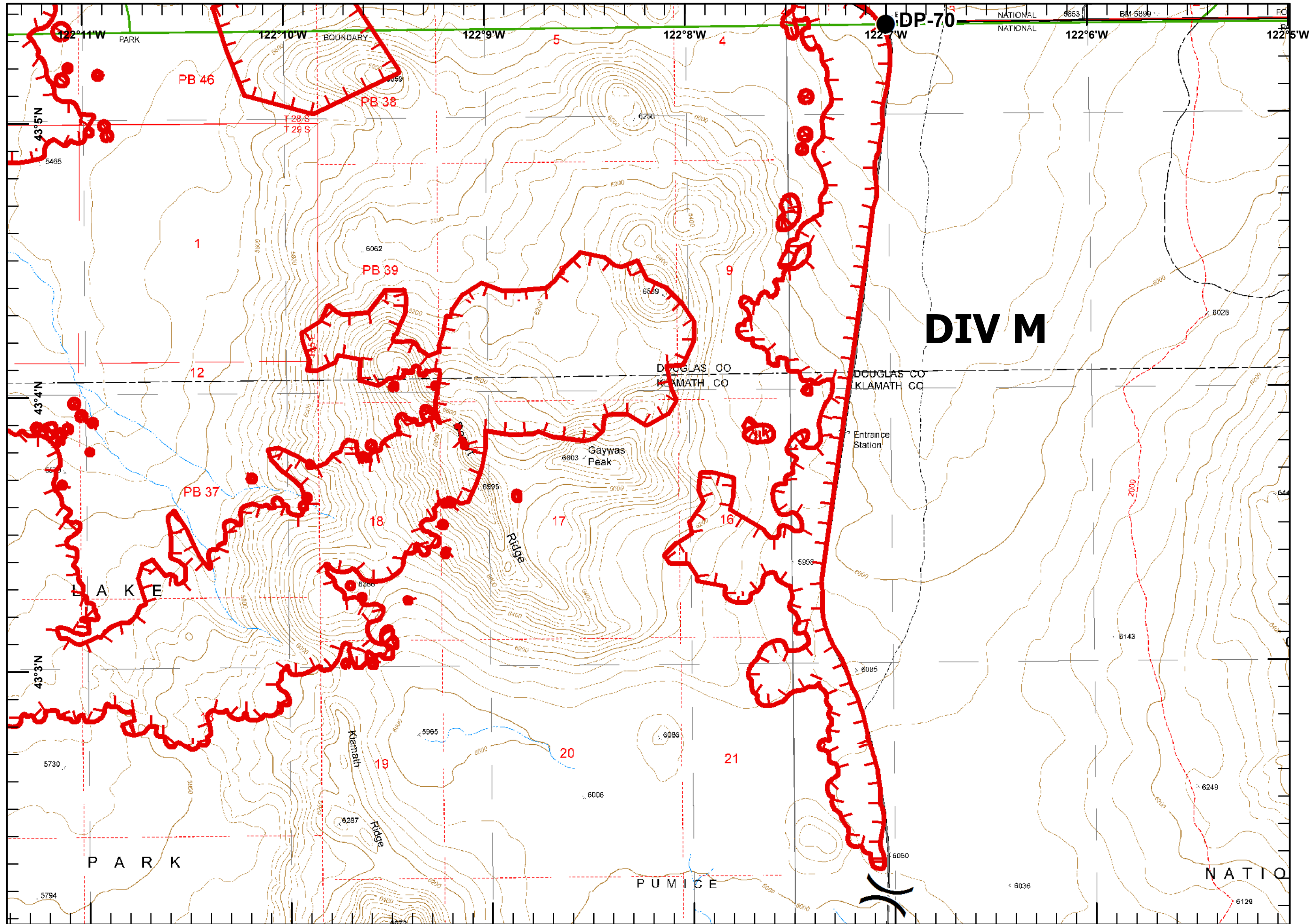
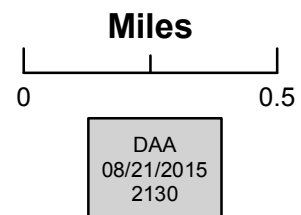


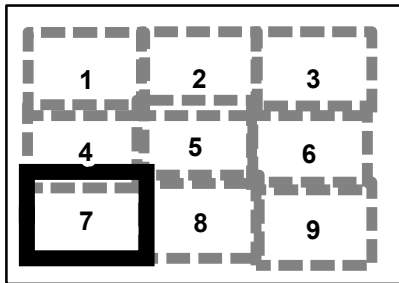
DAA  
 08/21/2015  
 2130

National Creek  
 Complex  
 OR-RSF-000836  
 August 27, 2015  
 Day Shift  
 NAD 83 Datum  
 13,211 Acres  
 Page 6

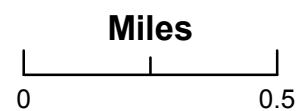


-  Division
-  Drop Point
-  Uncontrolled Fire Edge

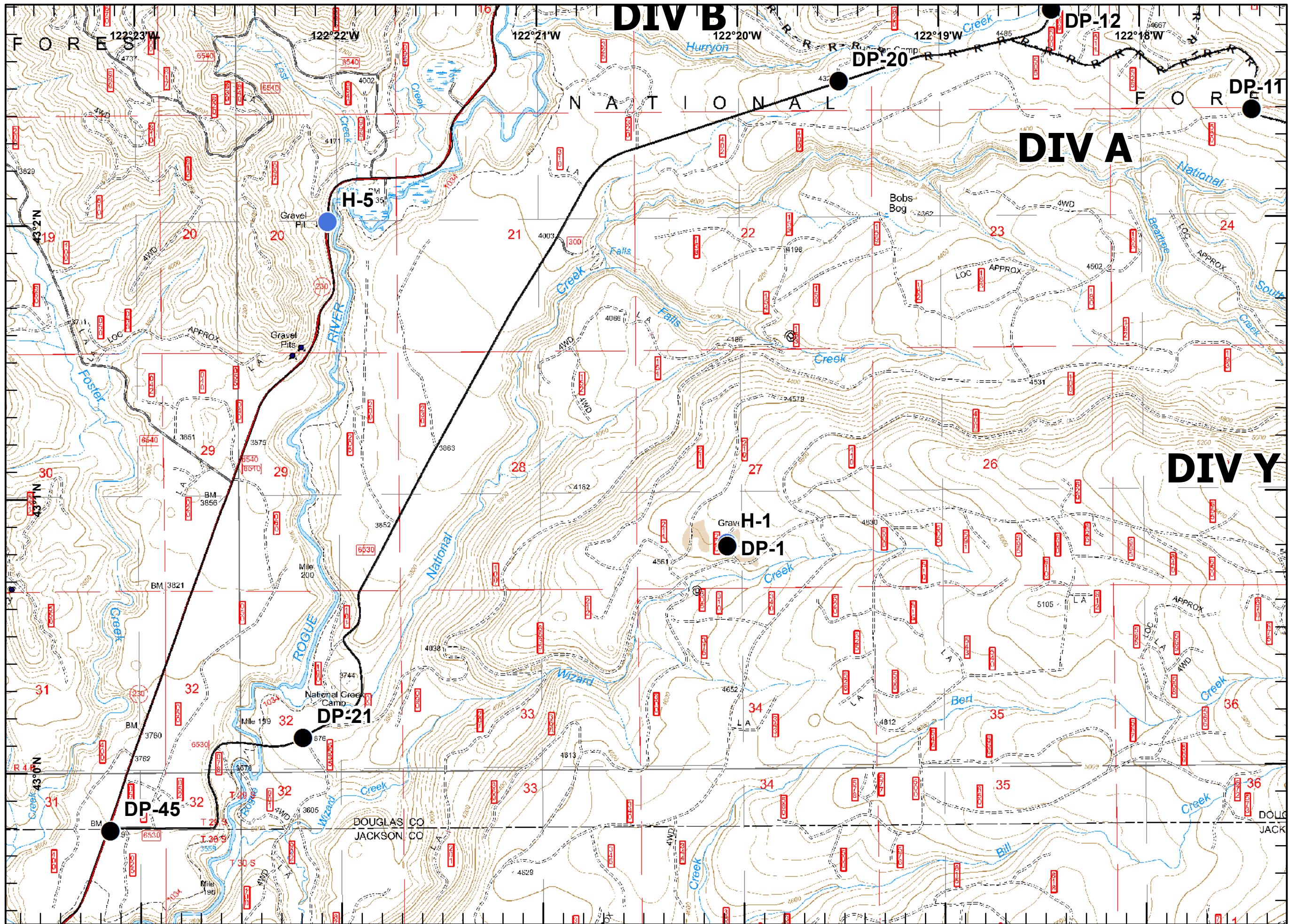


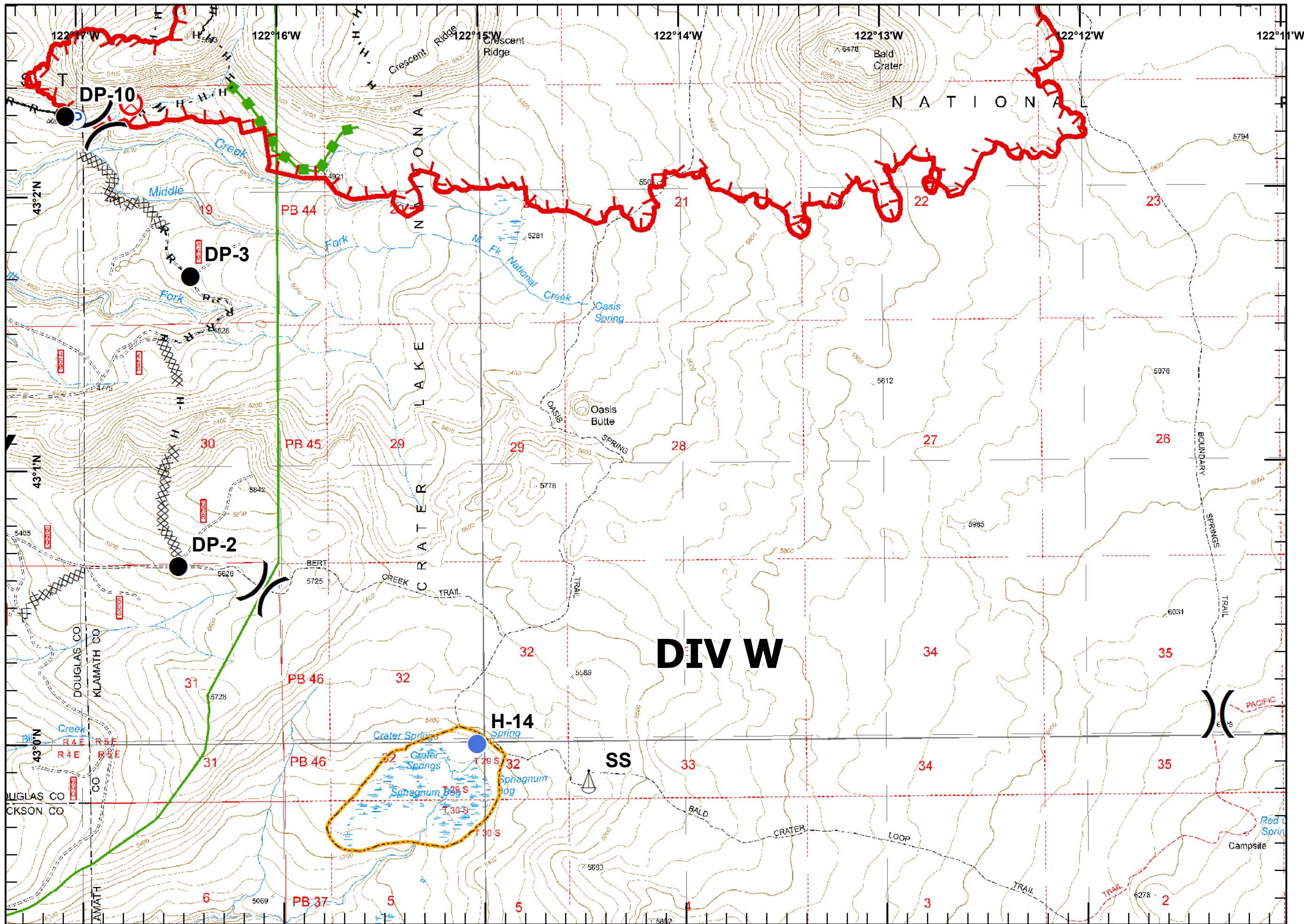
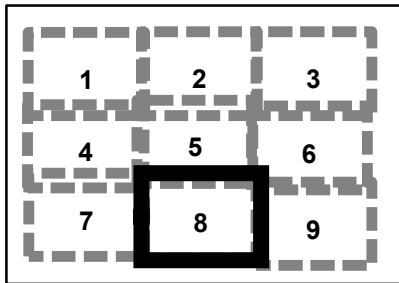


- Drop Point
- Helispot
- H - H Hand Line
- R - R Road as Completed Line



DAA  
 08/21/2015  
 2130





- Division
- Drop
- Fire Origin
- Helispot
- Pump
- Sling Site
- Uncontrolled Fire Edge
- Completed Dozer Line
- Hand Line
- Road as Completed Line
- Escape Route

