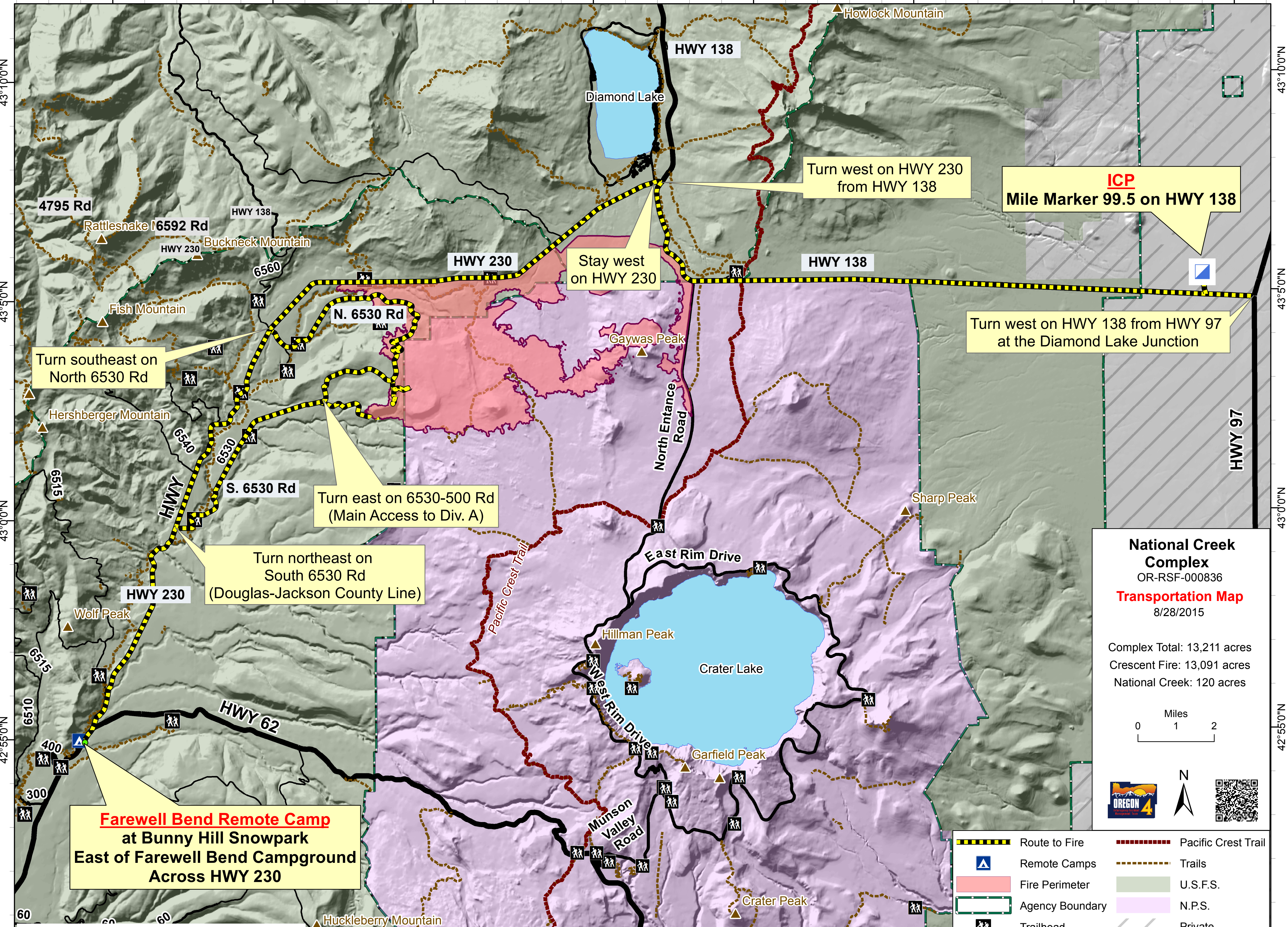


122°25'0"W 122°20'0"W 122°15'0"W 122°10'0"W 122°5'0"W 122°0'0"W 121°55'0"W 121°50'0"W



ICP
Mile Marker 99.5 on HWY 138

Turn west on HWY 230
from HWY 138

Stay west
on HWY 230

Turn west on HWY 138 from HWY 97
at the Diamond Lake Junction

Turn southeast on
North 6530 Rd

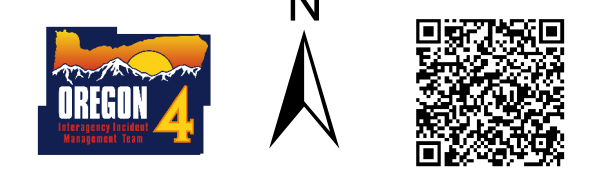
Turn east on 6530-500 Rd
(Main Access to Div. A)

Turn northeast on
South 6530 Rd
(Douglas-Jackson County Line)

Farewell Bend Remote Camp
at Bunny Hill Snowpark
East of Farewell Bend Campground
Across HWY 230

**National Creek
Complex**
OR-RSF-000836
Transportation Map
8/28/2015

Complex Total: 13,211 acres
Crescent Fire: 13,091 acres
National Creek: 120 acres



- Route to Fire
- Remote Camps
- Fire Perimeter
- Agency Boundary
- Trailhead
- Pacific Crest Trail
- Trails
- U.S.F.S.
- N.P.S.
- Private

Document Path: Z:\2015_Incidents\2015_National_Compex\projects\transport_topo_11x17_land_NationalCreekComplex_ORRSF836.mxd