

# National Creek Complex

OR-RSF-000836

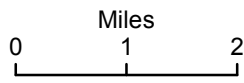
## Information Map

8/29/2015

**Complex Total: 14,502 acres**

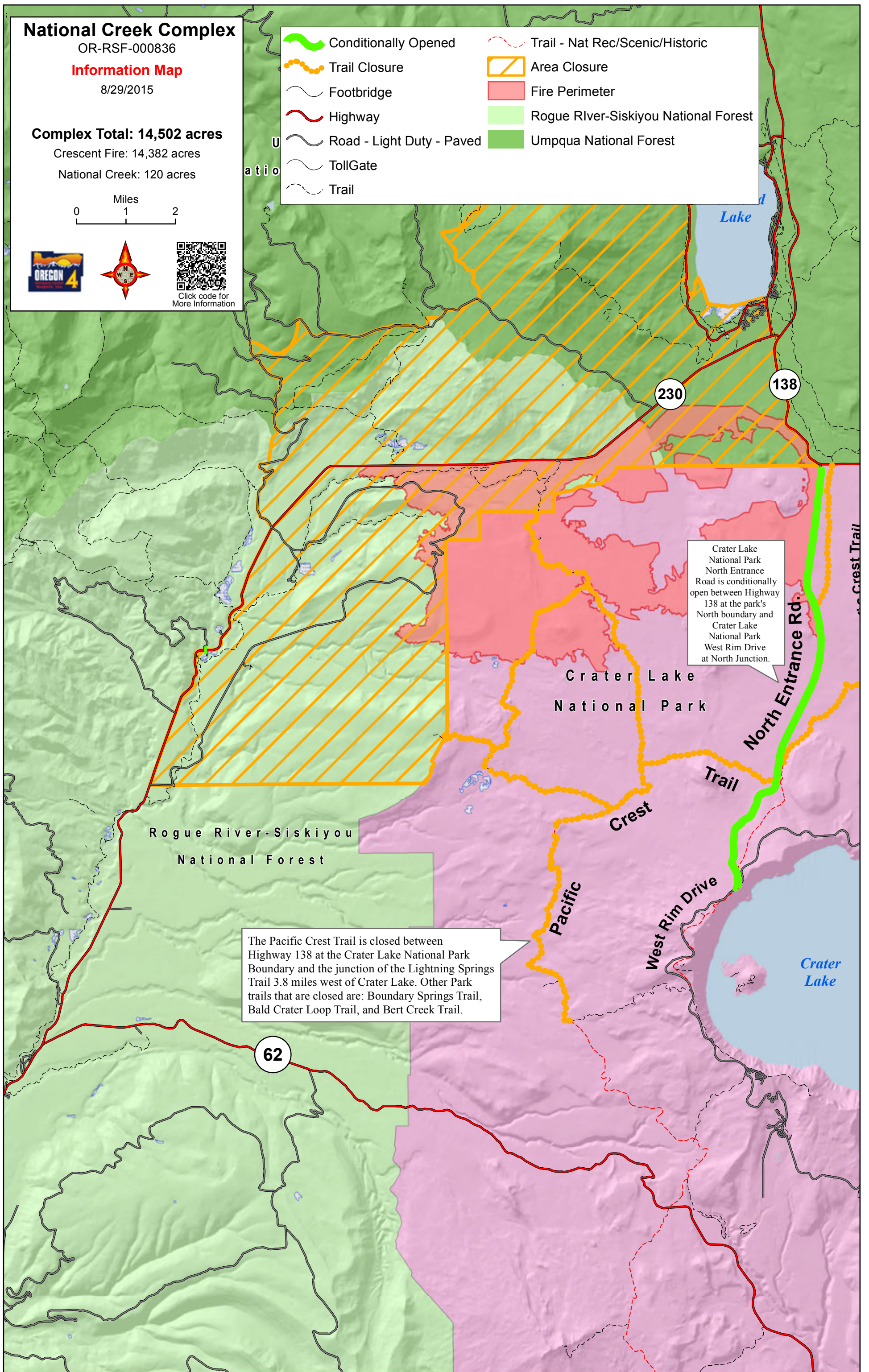
Crescent Fire: 14,382 acres

National Creek: 120 acres



Click code for More Information

	Conditionally Opened		Trail - Nat Rec/Scenic/Historic
	Trail Closure		Area Closure
	Footbridge		Fire Perimeter
	Highway		Rogue River-Siskiyou National Forest
	Road - Light Duty - Paved		Umpqua National Forest
	TollGate		
	Trail		



Crater Lake National Park North Entrance Road is conditionally open between Highway 138 at the park's North boundary and Crater Lake National Park West Rim Drive at North Junction.

The Pacific Crest Trail is closed between Highway 138 at the Crater Lake National Park Boundary and the junction of the Lightning Springs Trail 3.8 miles west of Crater Lake. Other Park trails that are closed are: Boundary Springs Trail, Bald Crater Loop Trail, and Bert Creek Trail.