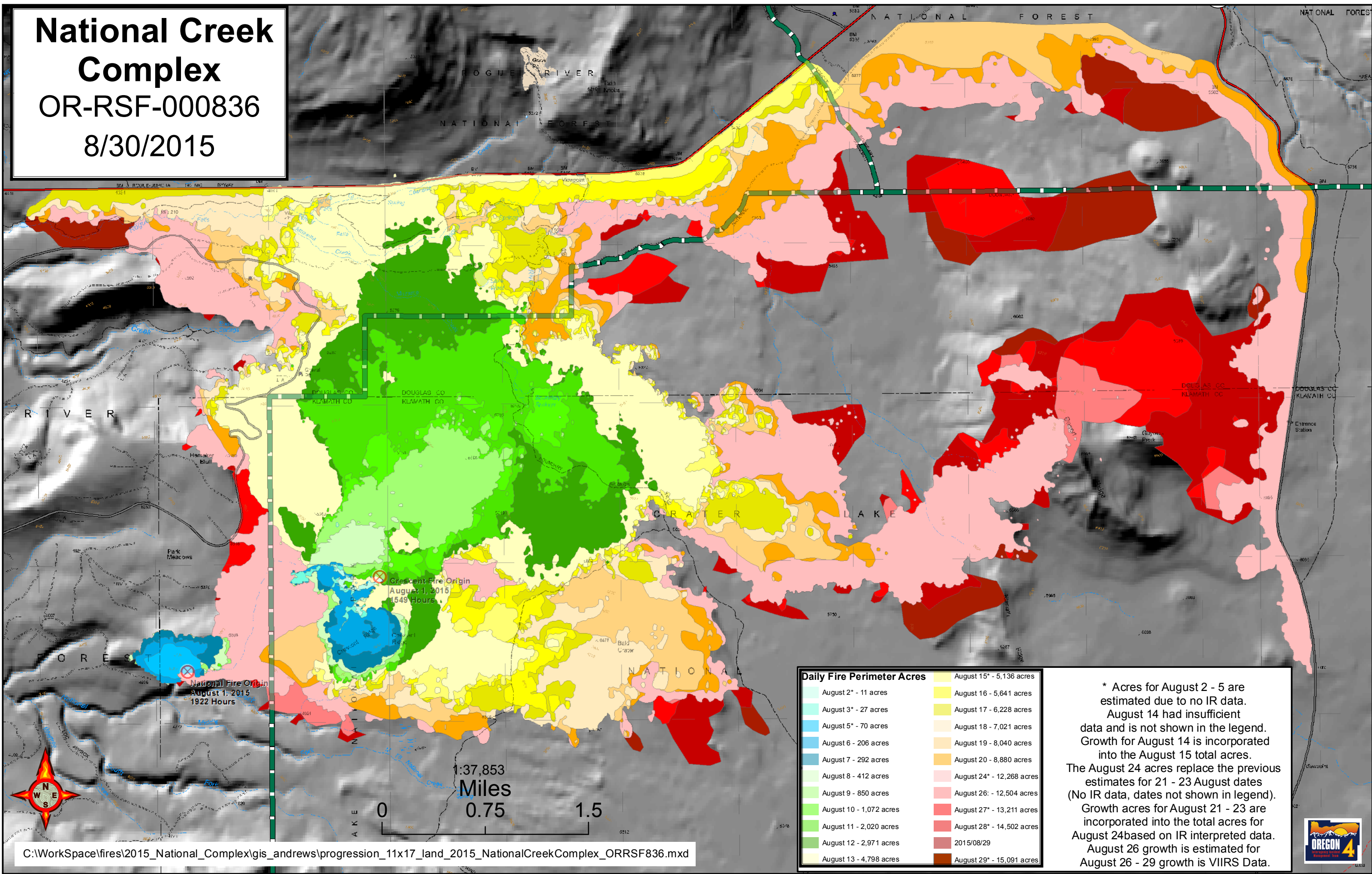


National Creek Complex

OR-RSF-000836

8/30/2015



Daily Fire Perimeter Acres

August 2* - 11 acres	August 15* - 5,136 acres
August 3* - 27 acres	August 16 - 5,641 acres
August 5* - 70 acres	August 17 - 6,228 acres
August 6 - 206 acres	August 18 - 7,021 acres
August 7 - 292 acres	August 19 - 8,040 acres
August 8 - 412 acres	August 20 - 8,880 acres
August 9 - 850 acres	August 24* - 12,268 acres
August 10 - 1,072 acres	August 26 - 12,504 acres
August 11 - 2,020 acres	August 27* - 13,211 acres
August 12 - 2,971 acres	August 28* - 14,502 acres
August 13 - 4,798 acres	2015/08/29
	August 29* - 15,091 acres

* Acres for August 2 - 5 are estimated due to no IR data. August 14 had insufficient data and is not shown in the legend. Growth for August 14 is incorporated into the August 15 total acres. The August 24 acres replace the previous estimates for 21 - 23 August dates (No IR data, dates not shown in legend). Growth acres for August 21 - 23 are incorporated into the total acres for August 24 based on IR interpreted data. August 26 growth is estimated for August 26 - 29 growth is VIIRS Data.



1:37,853
Miles
0 0.75 1.5

