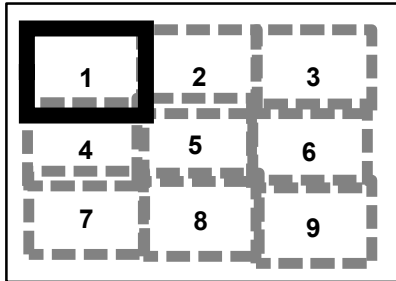
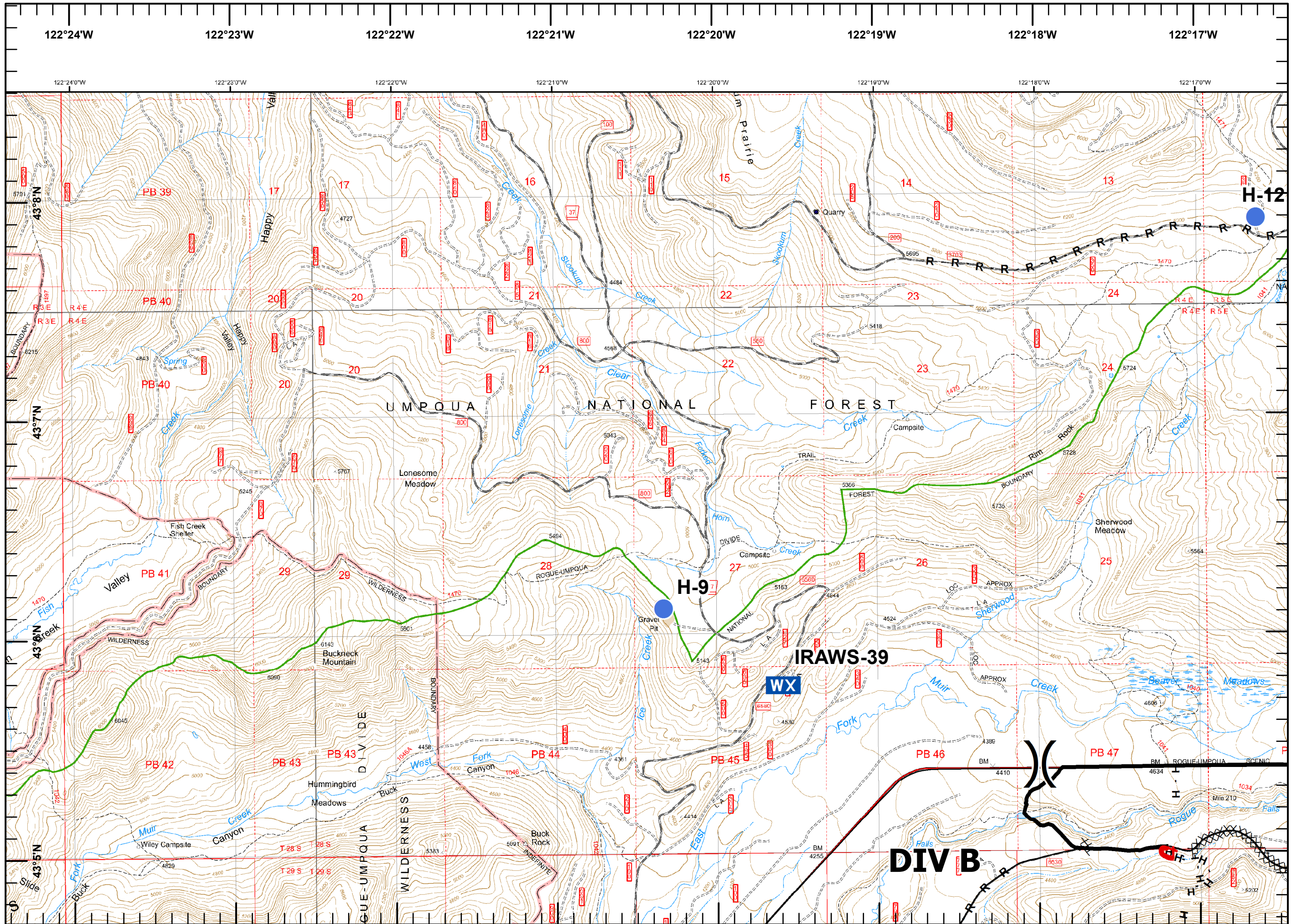
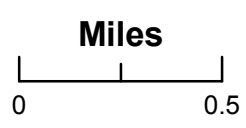


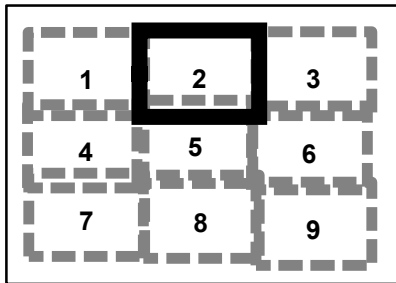
**National Creek
Complex
OR-RSF-000836
NAD 83 Datum
15,458 Acres
Page 1**



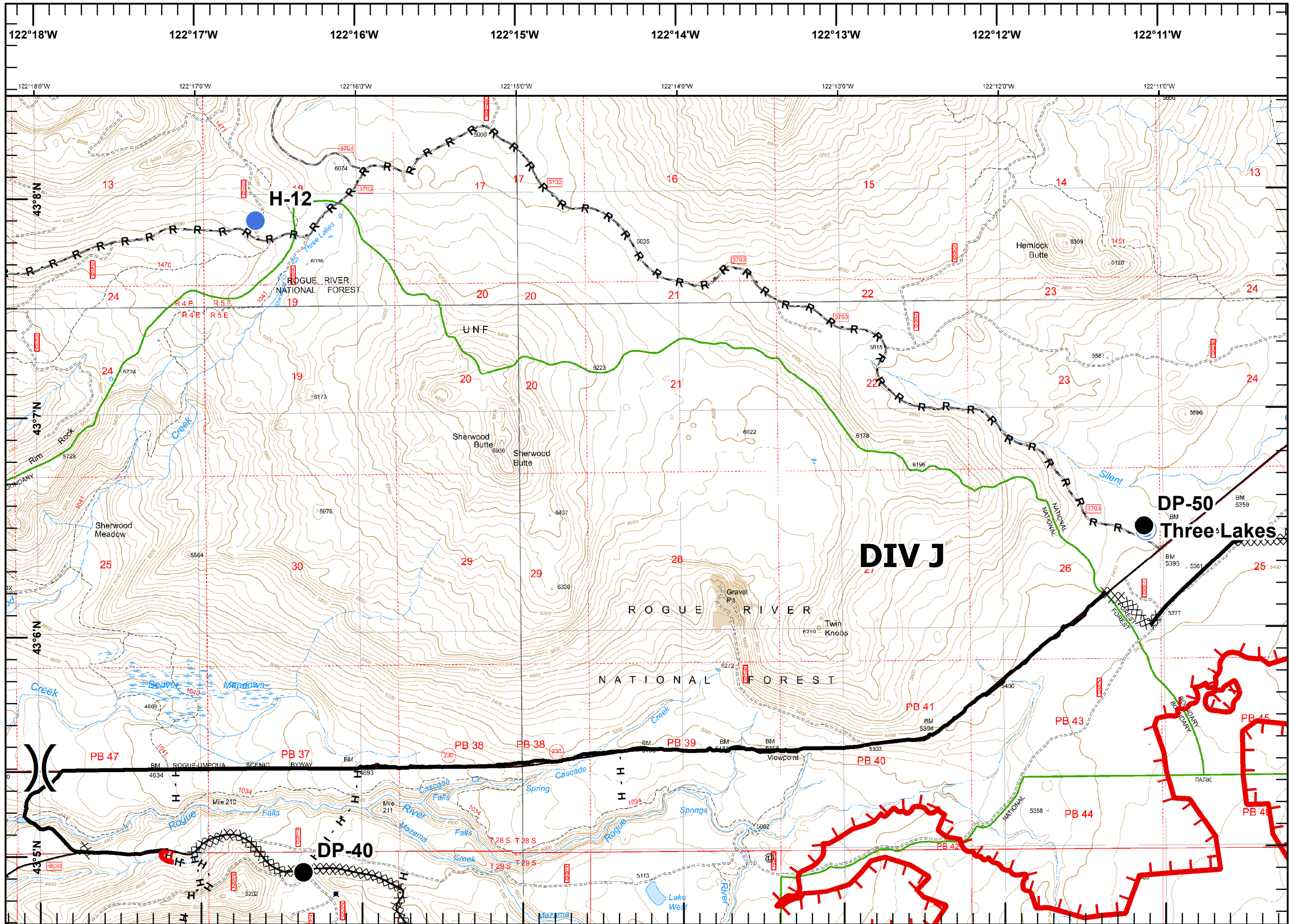
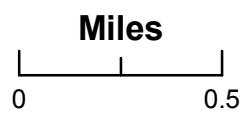
-  Division
-  Helispot
-  Mobile Weather Unit
-  Uncontrolled Fire Edge
-  Completed Dozer Line
-  Completed Line
- H - H Hand Line
- R - R Road as Completed Line

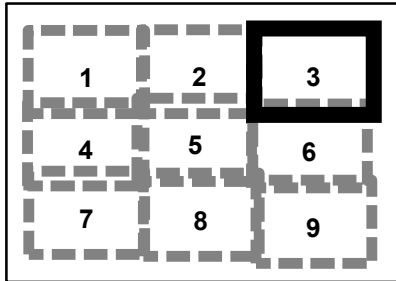


**National Creek
Complex
OR-RSF-000836
NAD 83 Datum
15,458 Acres
Page 2**

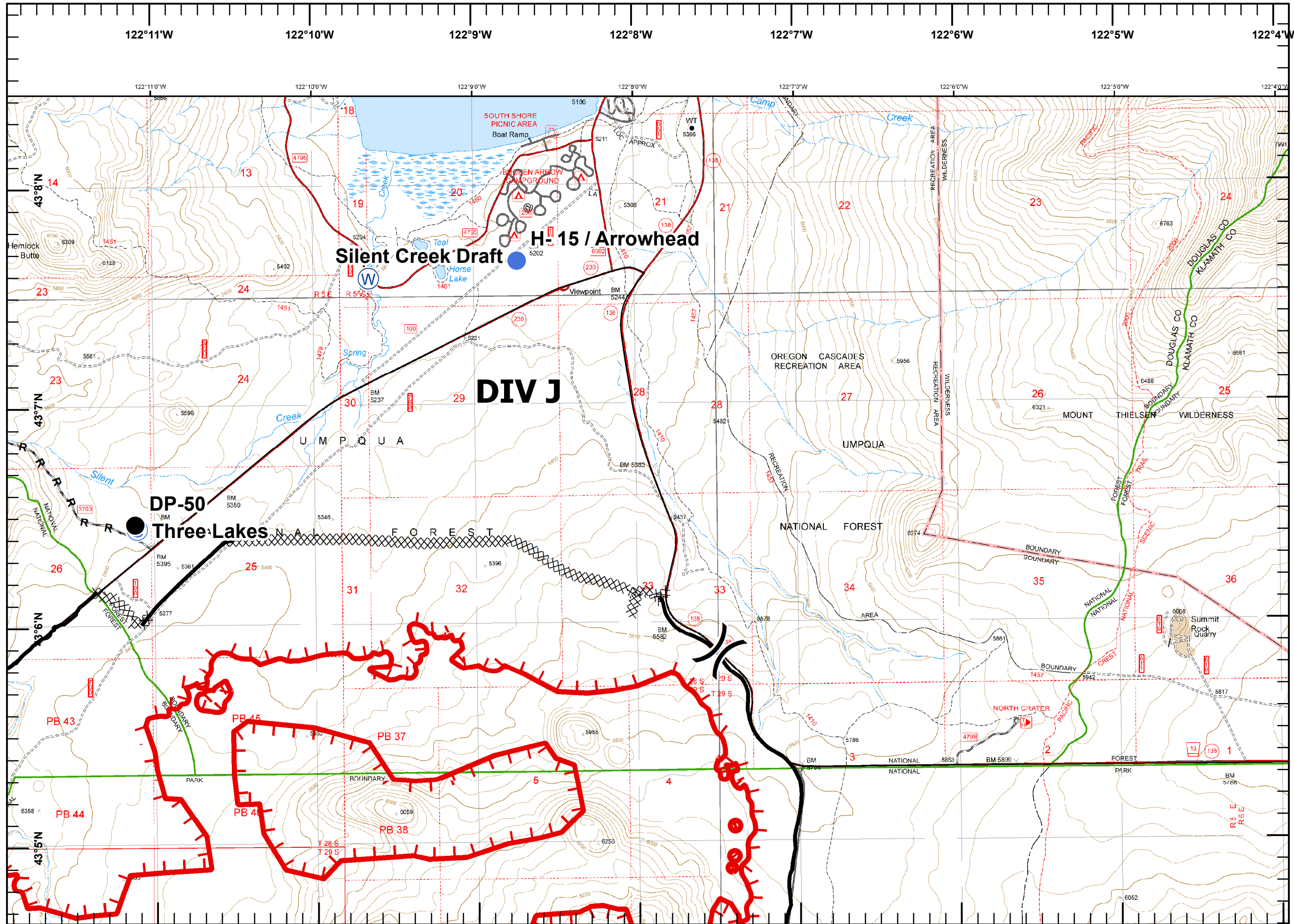
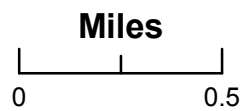


-  Division
-  Drop Point
-  Helispot
-  Staging Area
-  Uncontrolled Fire Edge
-  Completed Dozer Line
-  Completed Line
-  H - H Hand Line
-  R - R Road as Completed Line

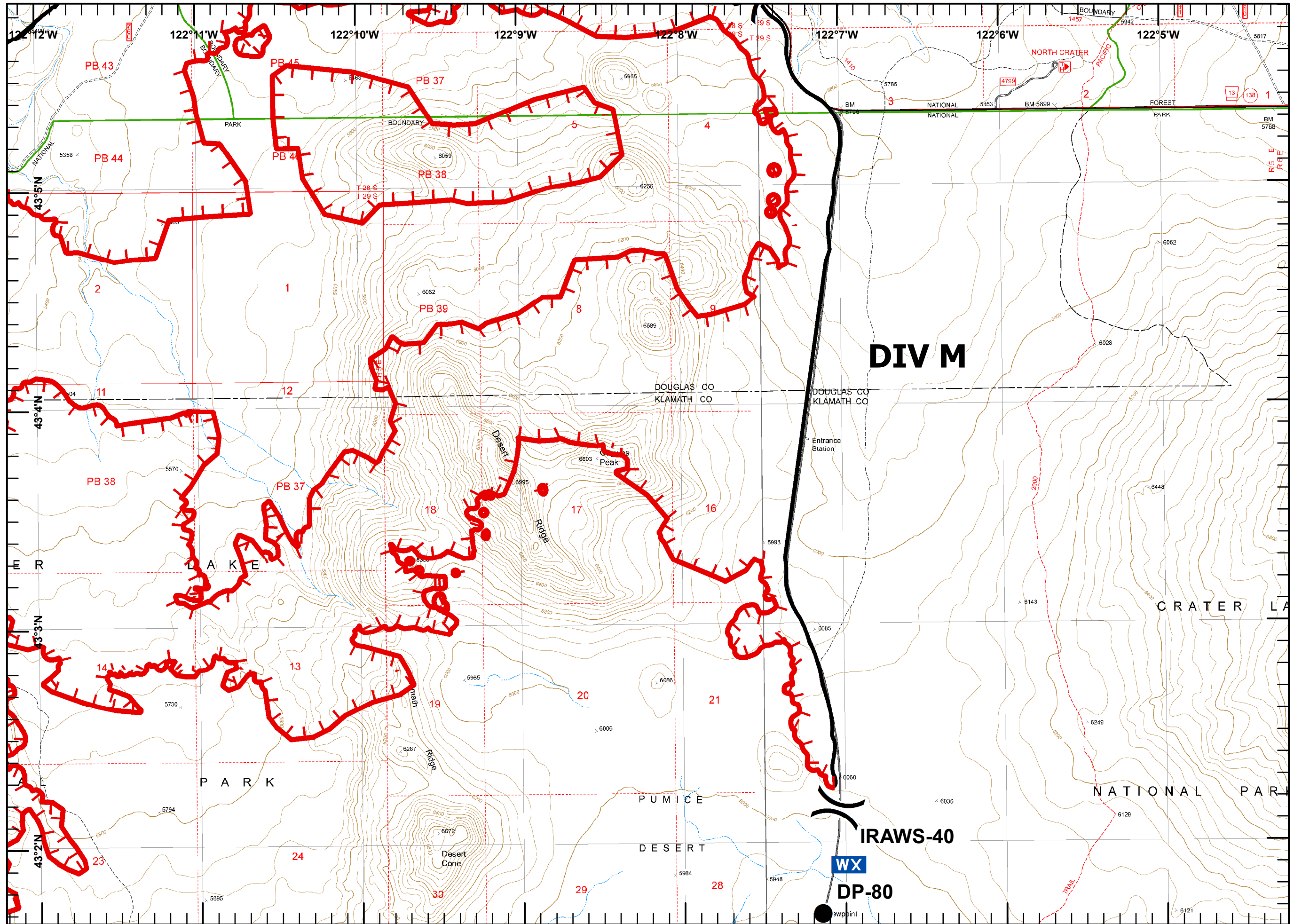
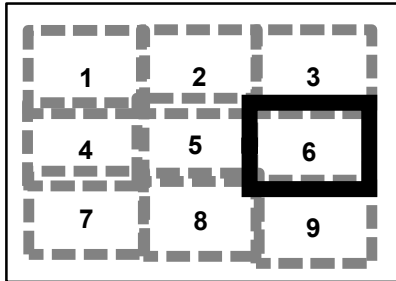


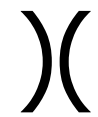






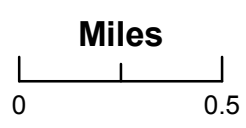
-  Division
-  Drop Point
-  Helispot
-  Staging Area
-  Water Source
-  Uncontrolled Fire Edge
-  Completed Dozer Line
-  Completed Line
- R - R Road as Completed Line

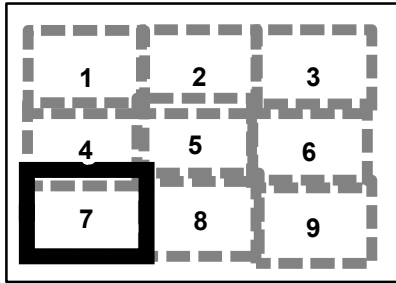


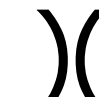





National Creek
Complex
OR-RSF-000836
NAD 83 Datum
15,458 Acres
Page 6

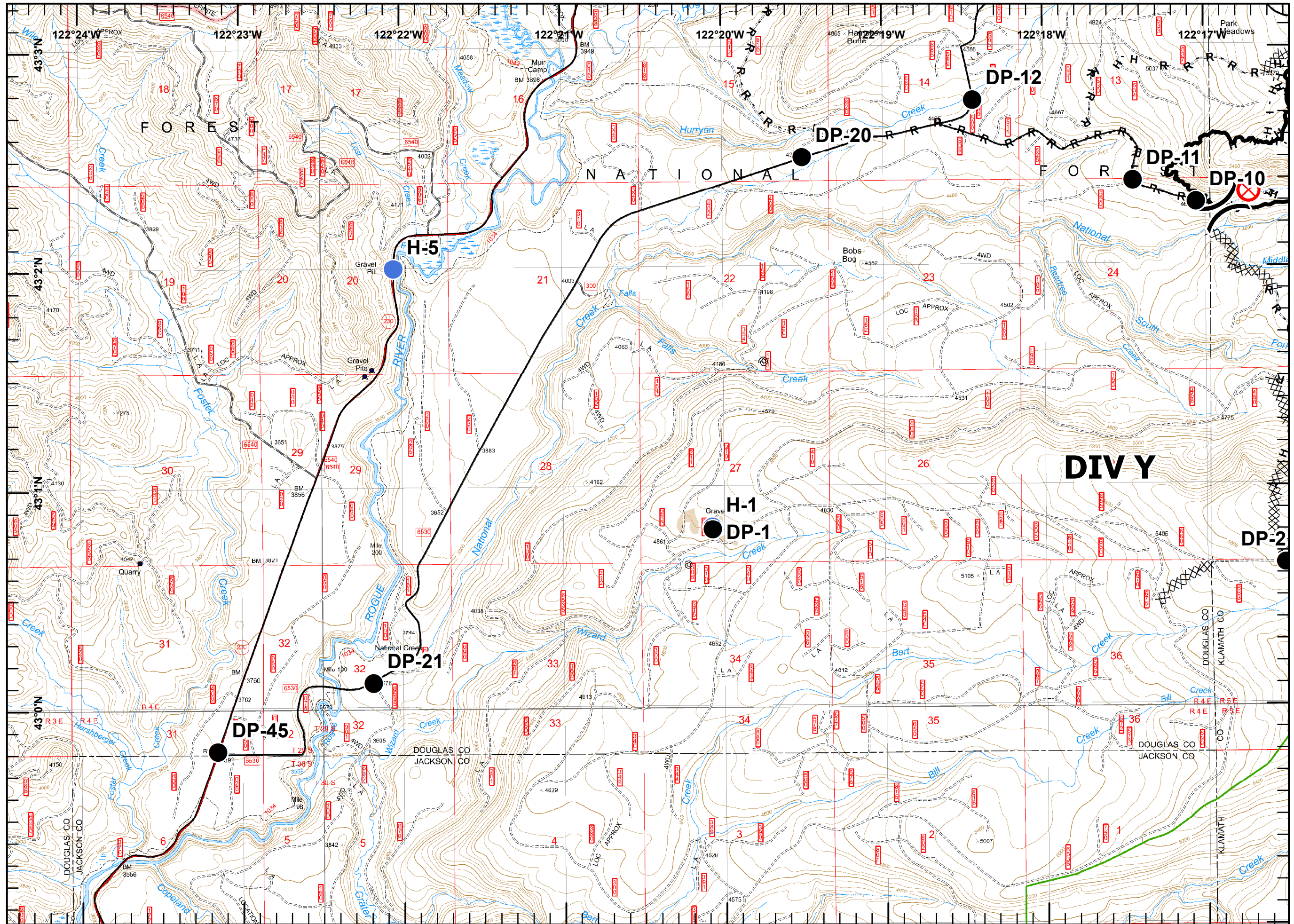


-  Division
-  Drop Point
-  Mobile Weather Unit
-  Uncontrolled Fire Edge
-  Completed Line

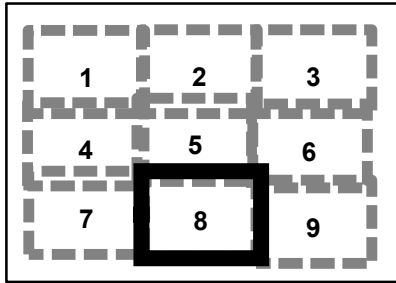





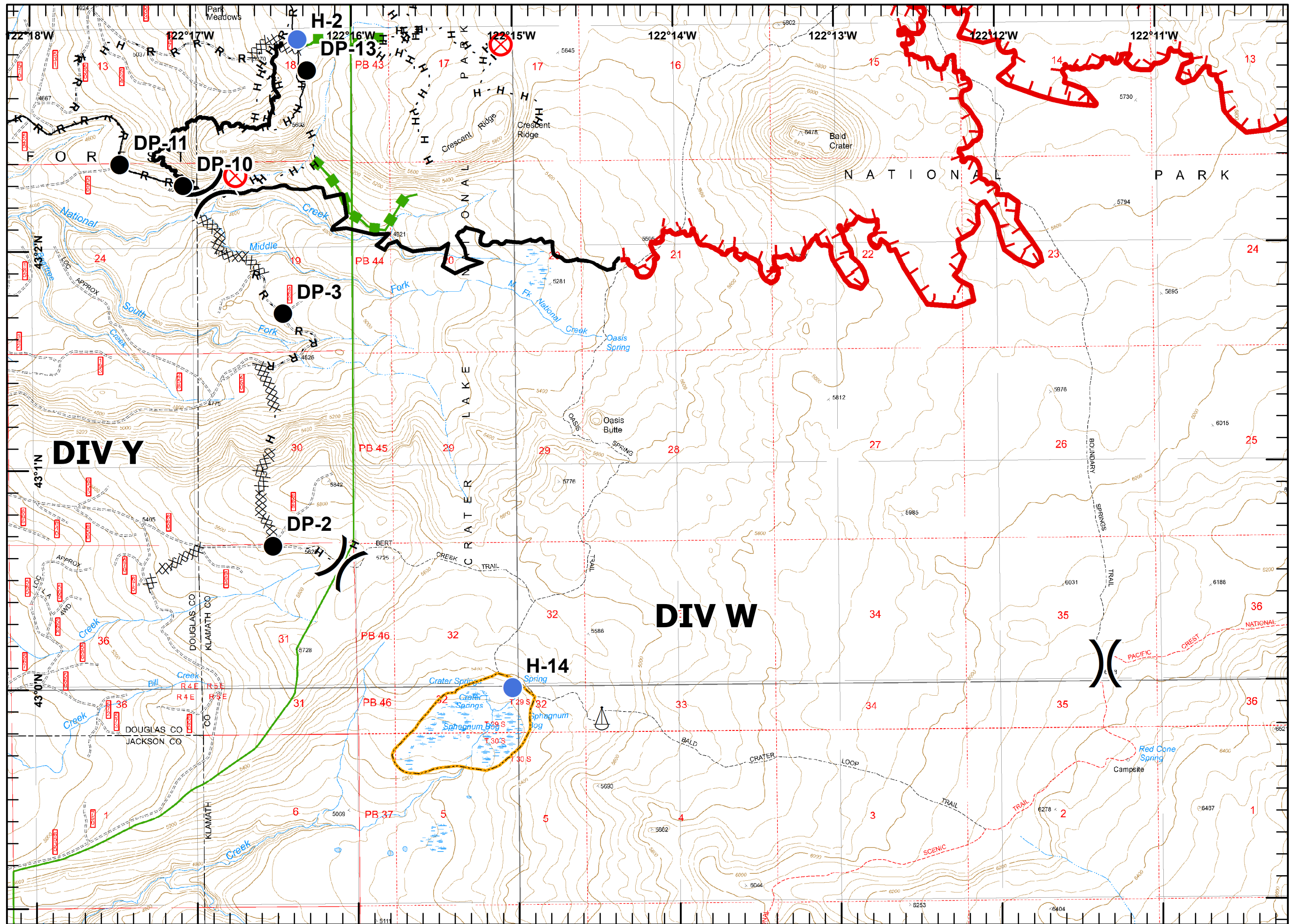
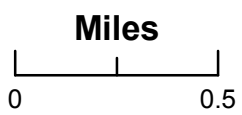
-  Division
-  Drop Point
-  Fire Origin
-  Helispot
-  Completed Dozer Line
-  Completed Line
- H - H Hand Line
- R - R Road as Completed Line



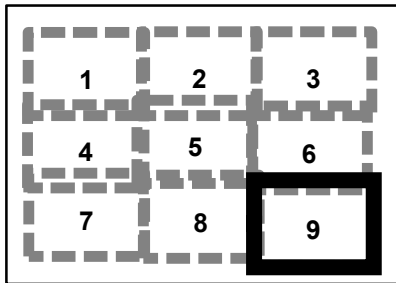
**National Creek
Complex
OR-RSF-000836
NAD 83 Datum
15,458 Acres
Page 8**

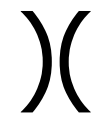







-  Division
-  Drop Point
-  Fire Origin
-  Helispot
-  Sling Site
-  Uncontrolled Fire Edge
-  Completed Dozer Line
-  Completed Line
-  H - H Hand Line
-  R - R Road as Completed Line
-  Escape Route



National Creek
Complex
OR-RSF-000836
NAD 83 Datum
15,458 Acres
Page 9



-  Division
-  Drop Point
-  Helispot
-  Mobile Weather Unit
-  Uncontrolled Fire Edge
-  Completed Line

