

# National Creek Complex

OR-RSF-000836

Progression Map

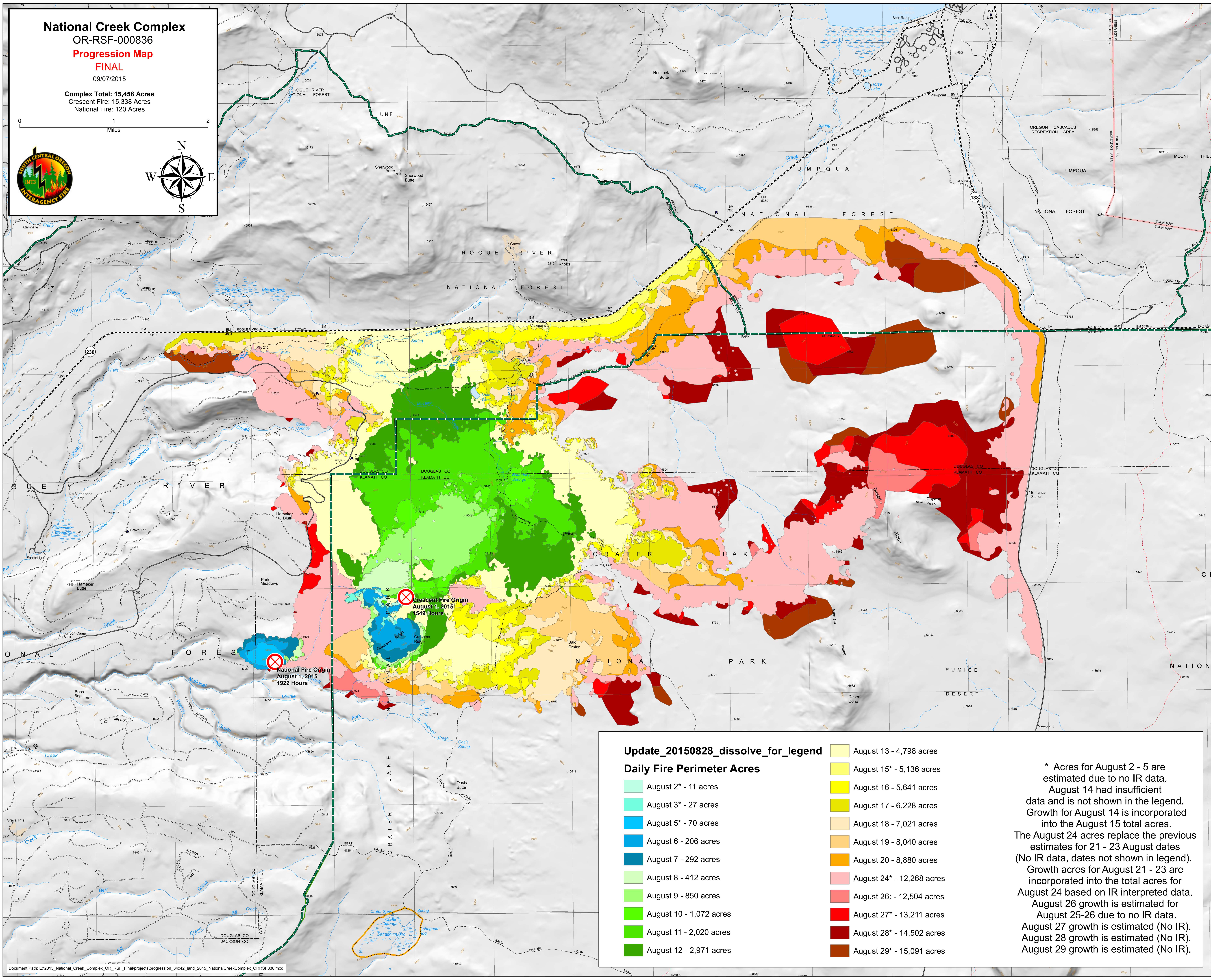
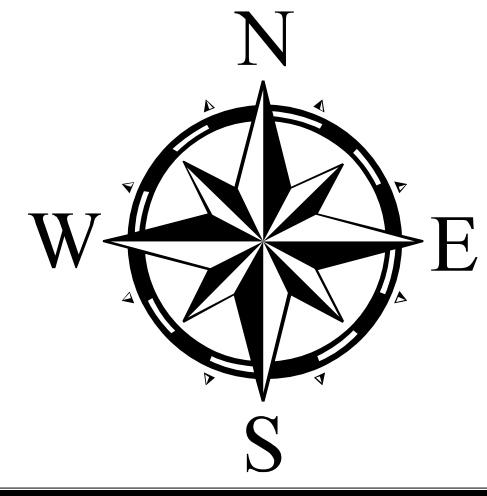
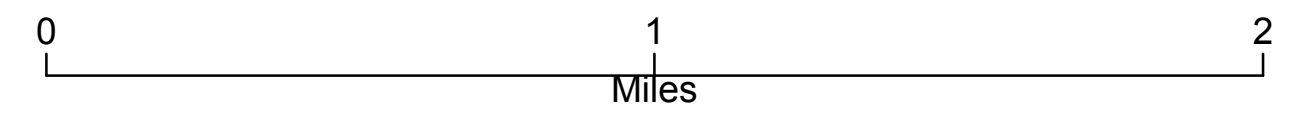
FINAL

09/07/2015

Complex Total: 15,458 Acres

Crescent Fire: 15,338 Acres

National Fire: 120 Acres



### Update\_20150828\_dissolve\_for\_legend

#### Daily Fire Perimeter Acres

	August 2* - 11 acres		August 13 - 4,798 acres
	August 3* - 27 acres		August 15* - 5,136 acres
	August 5* - 70 acres		August 16 - 5,641 acres
	August 6 - 206 acres		August 17 - 6,228 acres
	August 7 - 292 acres		August 18 - 7,021 acres
	August 8 - 412 acres		August 19 - 8,040 acres
	August 9 - 850 acres		August 20 - 8,880 acres
	August 10 - 1,072 acres		August 24* - 12,268 acres
	August 11 - 2,020 acres		August 26 - 12,504 acres
	August 12 - 2,971 acres		August 27* - 13,211 acres
			August 28* - 14,502 acres
			August 29* - 15,091 acres

\* Acres for August 2 - 5 are estimated due to no IR data. August 14 had insufficient data and is not shown in the legend. Growth for August 14 is incorporated into the August 15 total acres. The August 24 acres replace the previous estimates for 21 - 23 August dates (No IR data, dates not shown in legend). Growth acres for August 21 - 23 are incorporated into the total acres for August 24 based on IR interpreted data. August 26 growth is estimated for August 25-26 due to no IR data. August 27 growth is estimated (No IR). August 28 growth is estimated (No IR). August 29 growth is estimated (No IR).