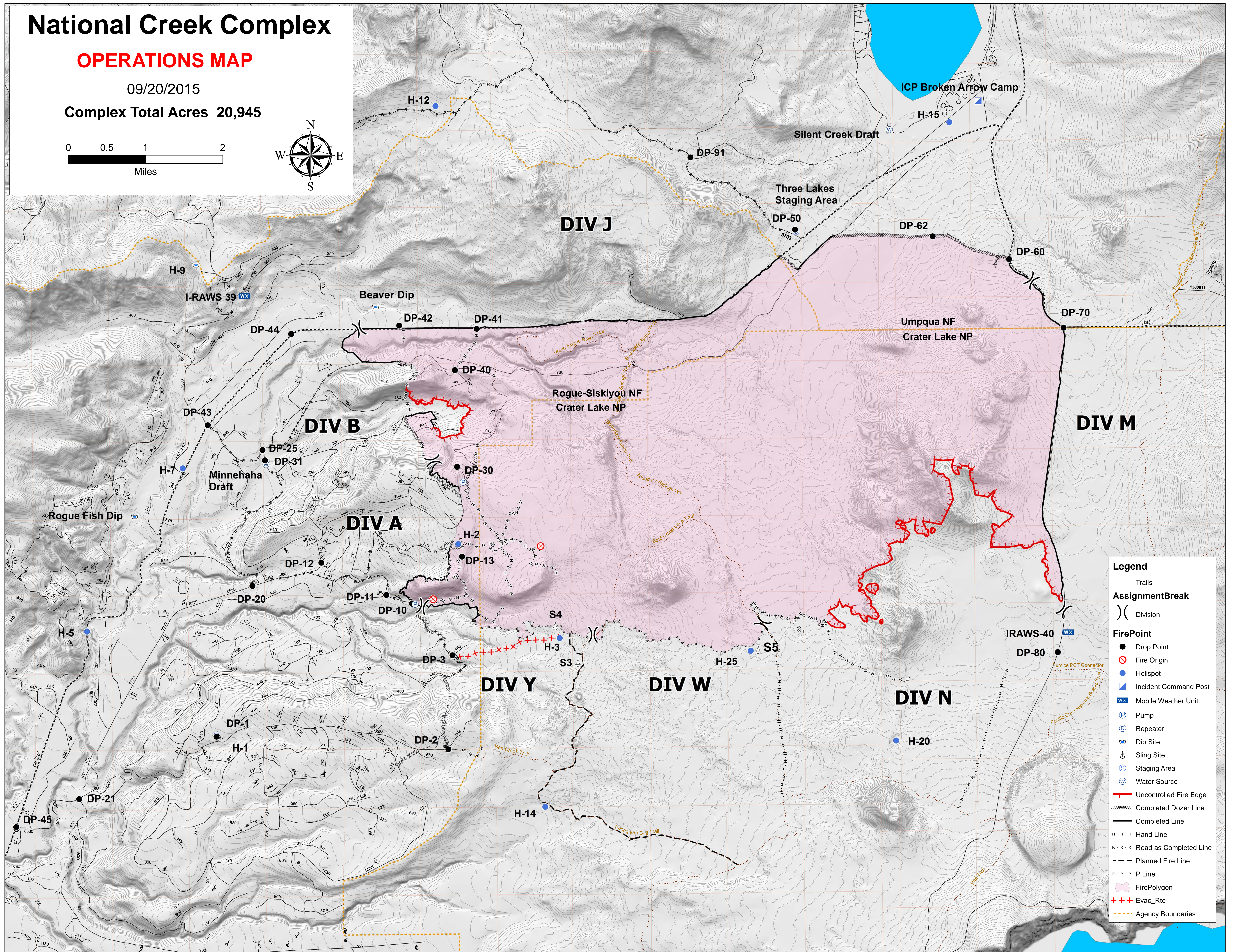
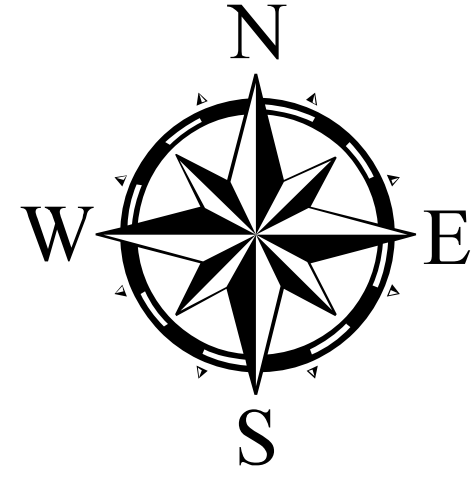
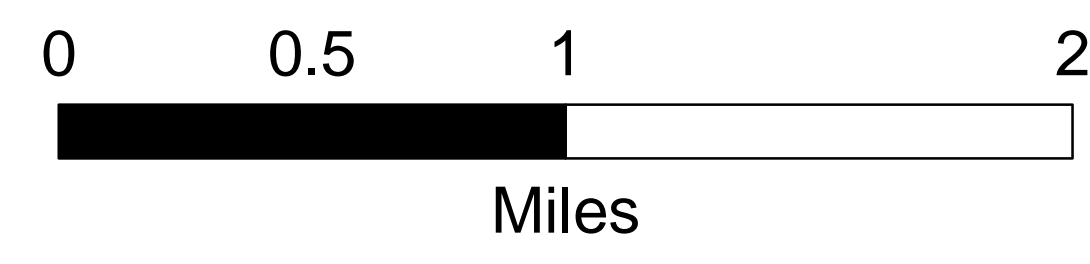


National Creek Complex

OPERATIONS MAP

09/20/2015

Complex Total Acres 20,945



Legend

- Trails
- AssignmentBreak**
 - Division
- FirePoint**
 - Drop Point
 - Fire Origin
 - Helispot
 - Incident Command Post
 - Mobile Weather Unit
 - Pump
 - Repeater
 - Dip Site
 - Sling Site
 - Staging Area
 - Water Source
- Uncontrolled Fire Edge
- Completed Dozer Line
- Completed Line
- Hand Line
- Road as Completed Line
- Planned Fire Line
- P Line
- FirePolygon
- Evac_Rte
- Agency Boundaries