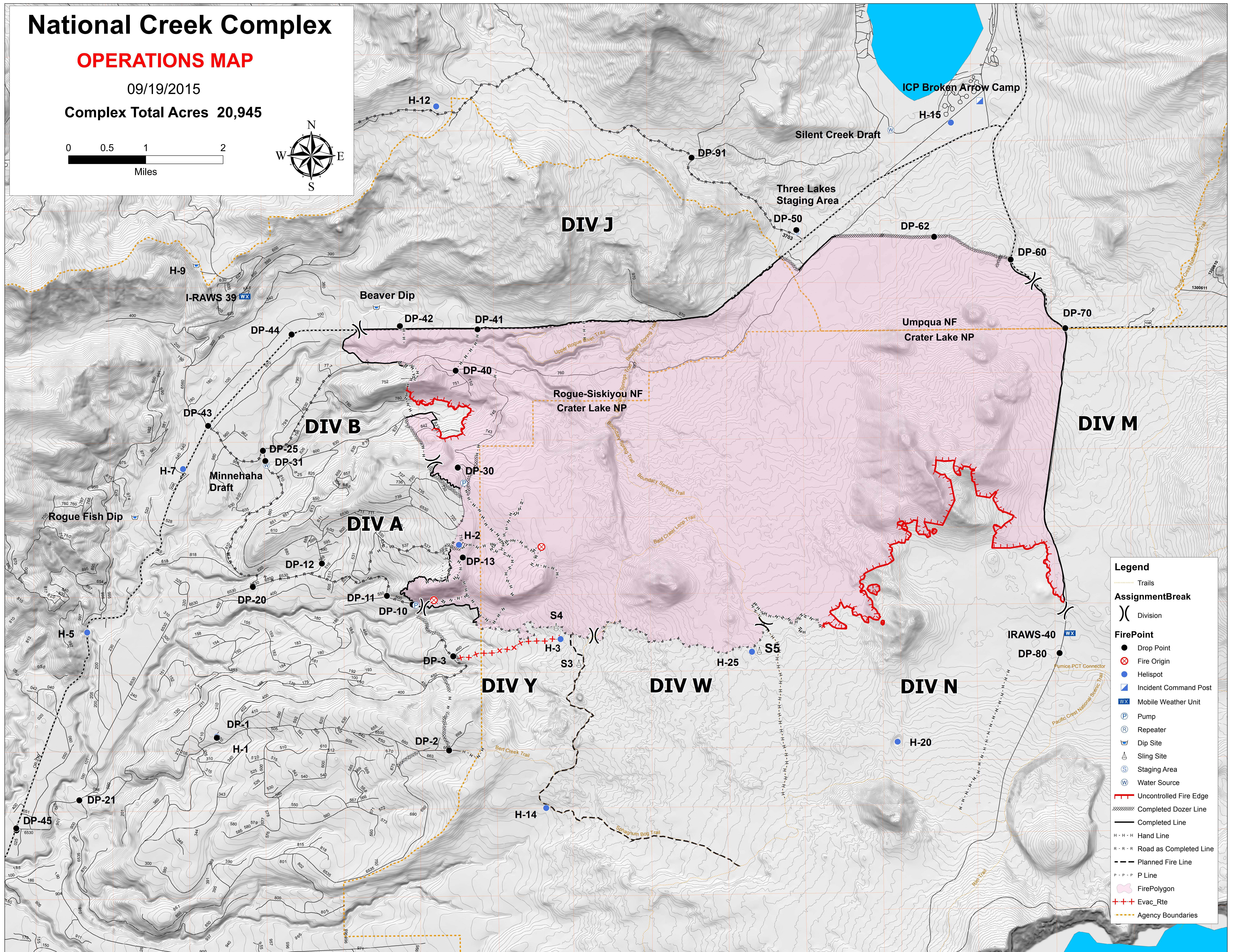
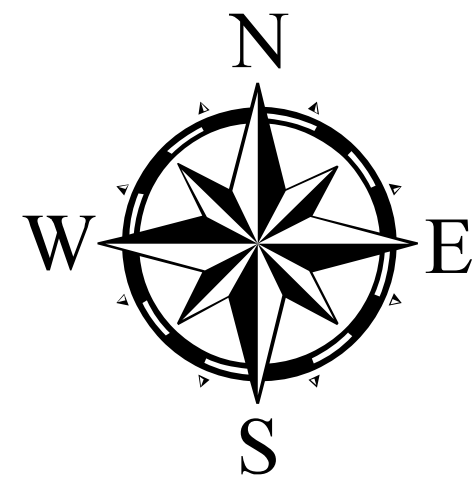
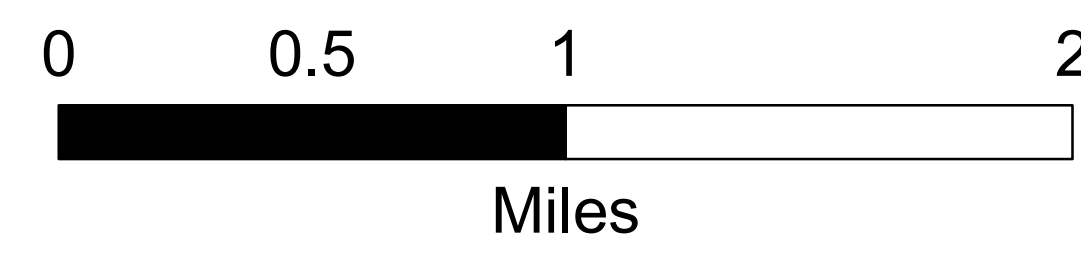


# National Creek Complex

## OPERATIONS MAP

09/19/2015

Complex Total Acres 20,945



**Legend**

- Trails
- AssignmentBreak**
  - Division
- FirePoint**
  - Drop Point
  - Fire Origin
  - Helispot
  - Incident Command Post
  - Mobile Weather Unit
  - Pump
  - Repeater
  - Dip Site
  - Sling Site
  - Staging Area
  - Water Source
- Uncontrolled Fire Edge
- Completed Dozer Line
- Completed Line
- Hand Line
- Road as Completed Line
- Planned Fire Line
- P Line
- FirePolygon
- Evac\_Rte
- Agency Boundaries