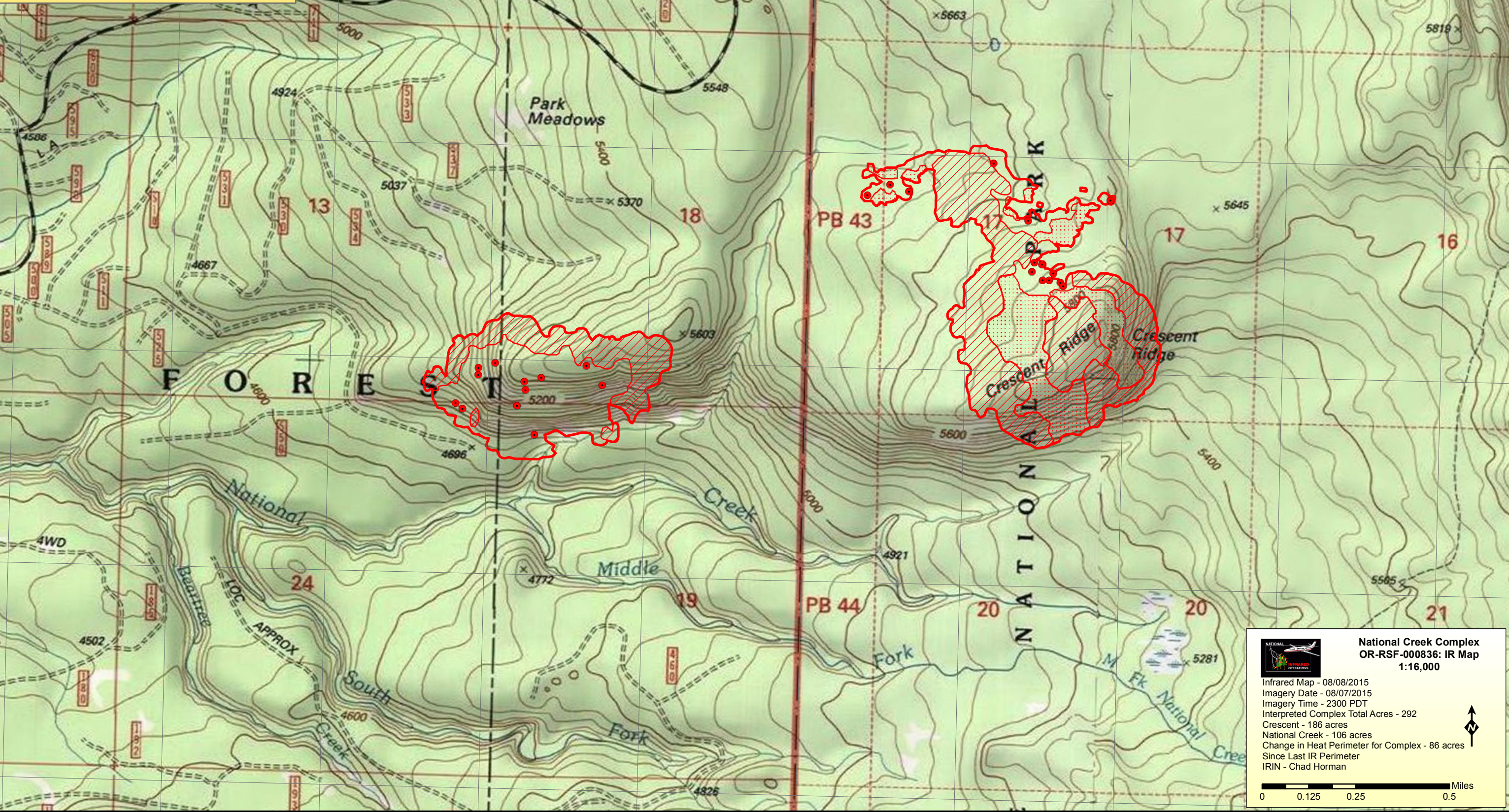


122°18'30"W 122°18'0"W 122°17'30"W 122°17'0"W 122°16'30"W 122°16'0"W 122°15'30"W 122°15'0"W 122°14'30"W 122°14'0"W

National Creek Complex IR Legend

- Isolated Heat
- ⬮ Heat Perimeter
- ▨ Intense Heat
- ▤ Scattered Heat



43°30'N
43°30'N
43°23'0"N
43°20'N
43°13'0"N

43°30'N
43°30'N
43°23'0"N
43°20'N
43°13'0"N

122°18'30"W 122°18'0"W 122°17'30"W 122°17'0"W 122°16'30"W 122°16'0"W 122°15'30"W 122°15'0"W 122°14'30"W 122°14'0"W

**National Creek Complex
OR-RSF-000836: IR Map
1:16,000**

Infrared Map - 08/08/2015
 Imagery Date - 08/07/2015
 Imagery Time - 2300 PDT
 Interpreted Complex Total Acres - 292
 Crescent - 186 acres
 National Creek - 106 acres
 Change in Heat Perimeter for Complex - 86 acres
 Since Last IR Perimeter
 IRIN - Chad Horman

0 0.125 0.25 0.5 Miles