



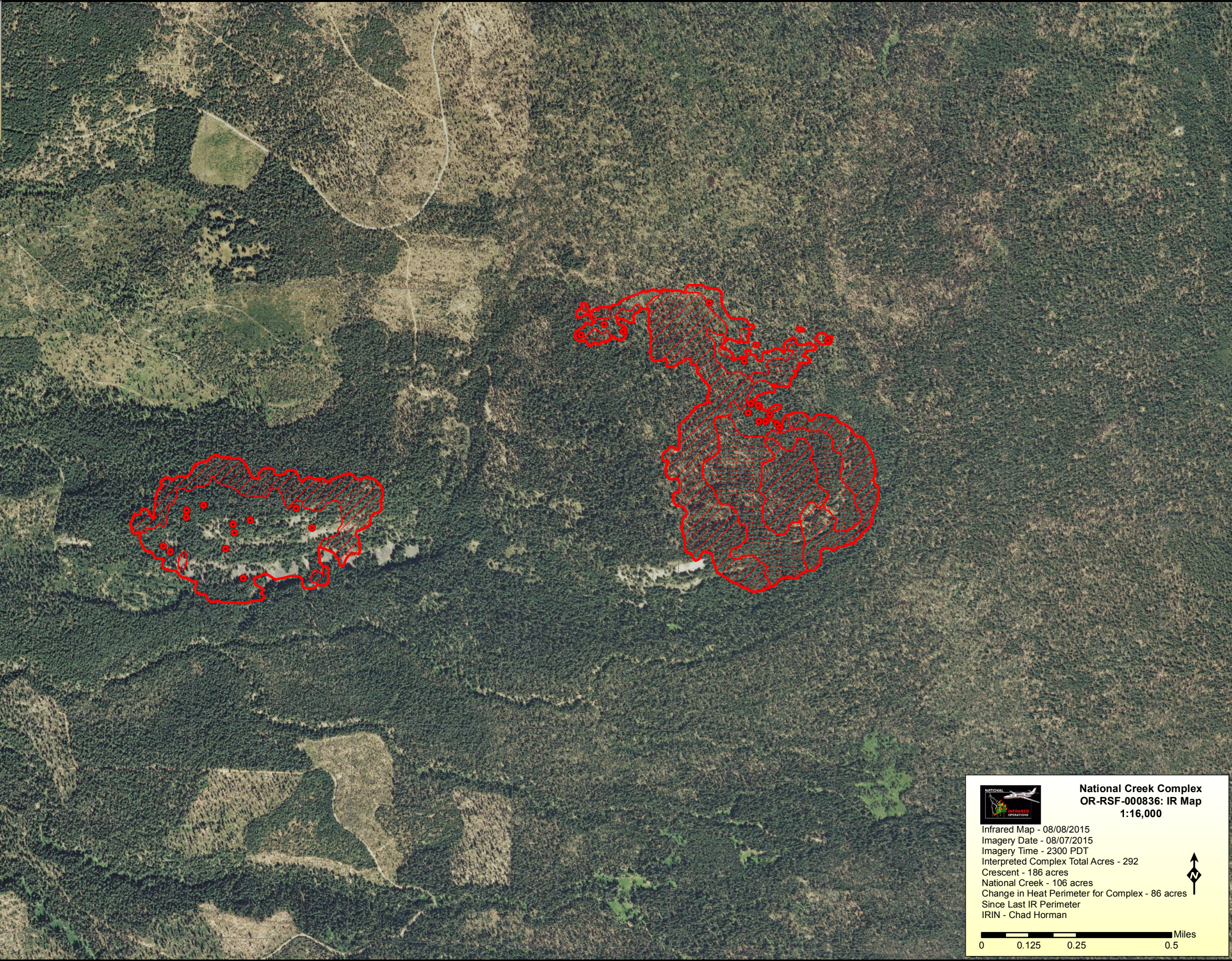


122°18'30"W 122°18'0"W 122°17'30"W 122°17'0"W 122°16'30"W 122°16'0"W 122°15'30"W 122°15'0"W 122°14'30"W 122°14'0"W

**National Creek Complex IR Legend**


-  Isolated Heat
-  Heat Perimeter
-  Intense Heat
-  Scattered Heat




43°30'N  
43°30'N  
43°23'0"N  
43°20'N  
43°13'0"N

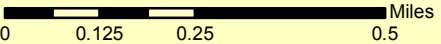
43°30'N  
43°30'N  
43°23'0"N  
43°20'N  
43°13'0"N

122°18'30"W 122°18'0"W 122°17'30"W 122°17'0"W 122°16'30"W 122°16'0"W 122°15'30"W 122°15'0"W 122°14'30"W 122°14'0"W

 **National Creek Complex  
OR-RSF-000836: IR Map  
1:16,000**

Infrared Map - 08/08/2015  
 Imagery Date - 08/07/2015  
 Imagery Time - 2300 PDT  
 Interpreted Complex Total Acres - 292  
 Crescent - 186 acres  
 National Creek - 106 acres  
 Change in Heat Perimeter for Complex - 86 acres  
 Since Last IR Perimeter  
 IRIN - Chad Horman



 Miles  
 0 0.125 0.25 0.5