

122°18'W 122°16'W 122°14'W 122°12'W 122°10'W 122°8'W 122°6'W

NationalCreek Complex OR-RSF-000836 Infrared Interpretation - 09/14/2015

Imagery Date:
09/14/2015 0238 hrs MDT



IR Interpreted Acres: 19,498
IRIN: David Stephenson (T)

43°6'N

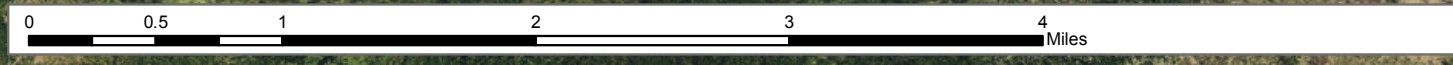
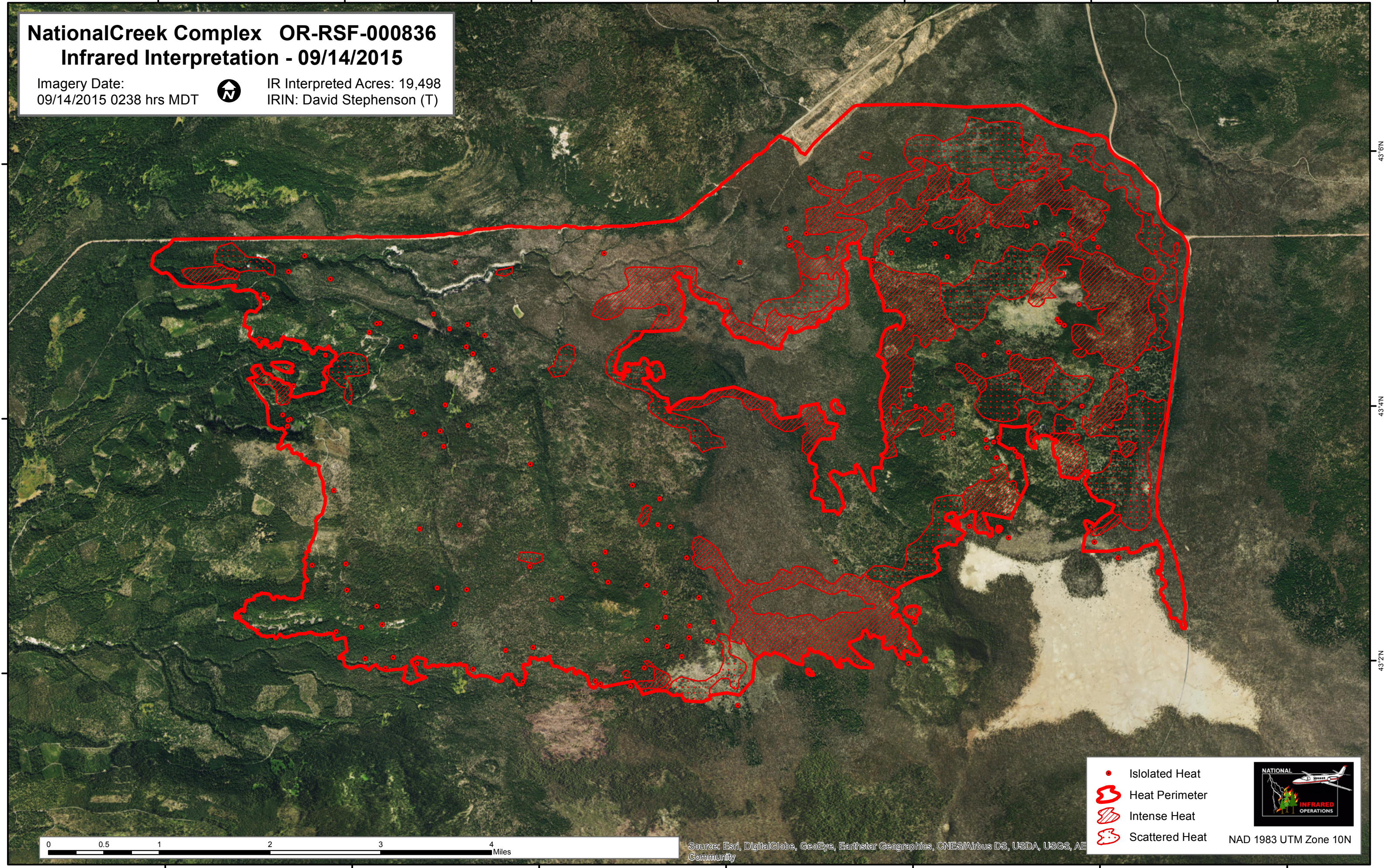
43°4'N

43°2'N




43°6'N


43°4'N

43°2'N



Source: Esri, DigitalGlobe, GeoEye, Earthstar Geographics, CNES/Airbus DS, USDA, USGS, AeroGRID, IGN, SIA, Airphoto, IGN, Community

-  Isolated Heat
-  Heat Perimeter
-  Intense Heat
-  Scattered Heat



NAD 1983 UTM Zone 10N

122°18'W 122°16'W 122°14'W 122°12'W 122°10'W 122°8'W 122°6'W