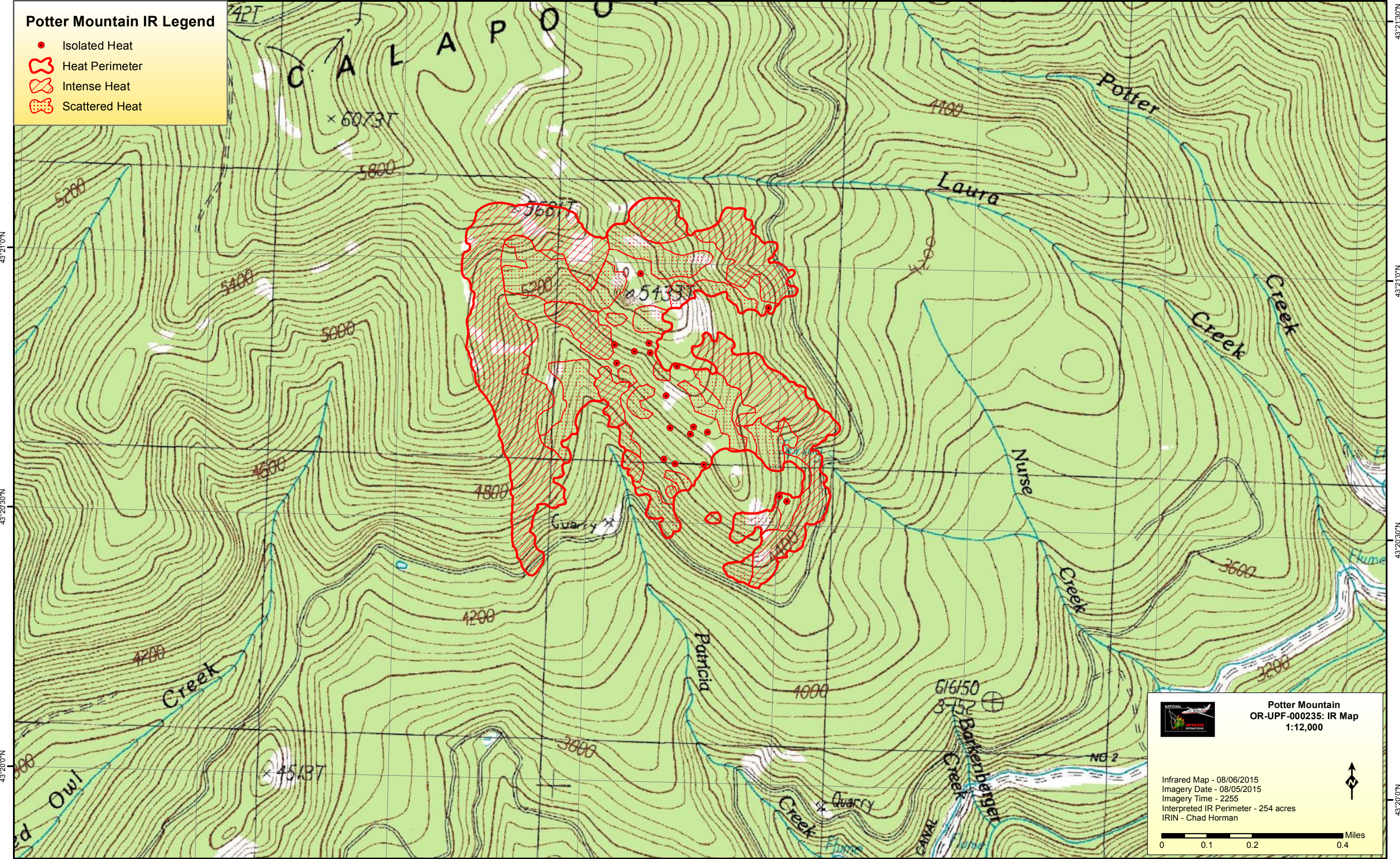



122°21'30"W 122°21'0"W 122°20'30"W 122°20'0"W 122°19'30"W 122°19'0"W 122°18'30"W 122°18'0"W

Potter Mountain IR Legend


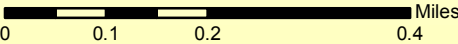
- Isolated Heat
- Heat Perimeter
- Intense Heat
- Scattered Heat





**Potter Mountain
OR-UPF-000235: IR Map
1:12,000**

Infrared Map - 08/06/2015
Imagery Date - 08/05/2015
Imagery Time - 2255
Interpreted IR Perimeter - 254 acres
IRIN - Chad Horman

122°21'0"W 122°20'30"W 122°20'0"W 122°19'30"W 122°19'0"W 122°18'30"W 122°18'0"W

43°21'0"N

43°20'30"N

43°20'0"N

43°21'30"N

43°21'0"N

43°20'30"N

43°20'0"N