

117°10'0"W 117°9'30"W 117°9'0"W 117°8'30"W 117°8'0"W 117°7'30"W

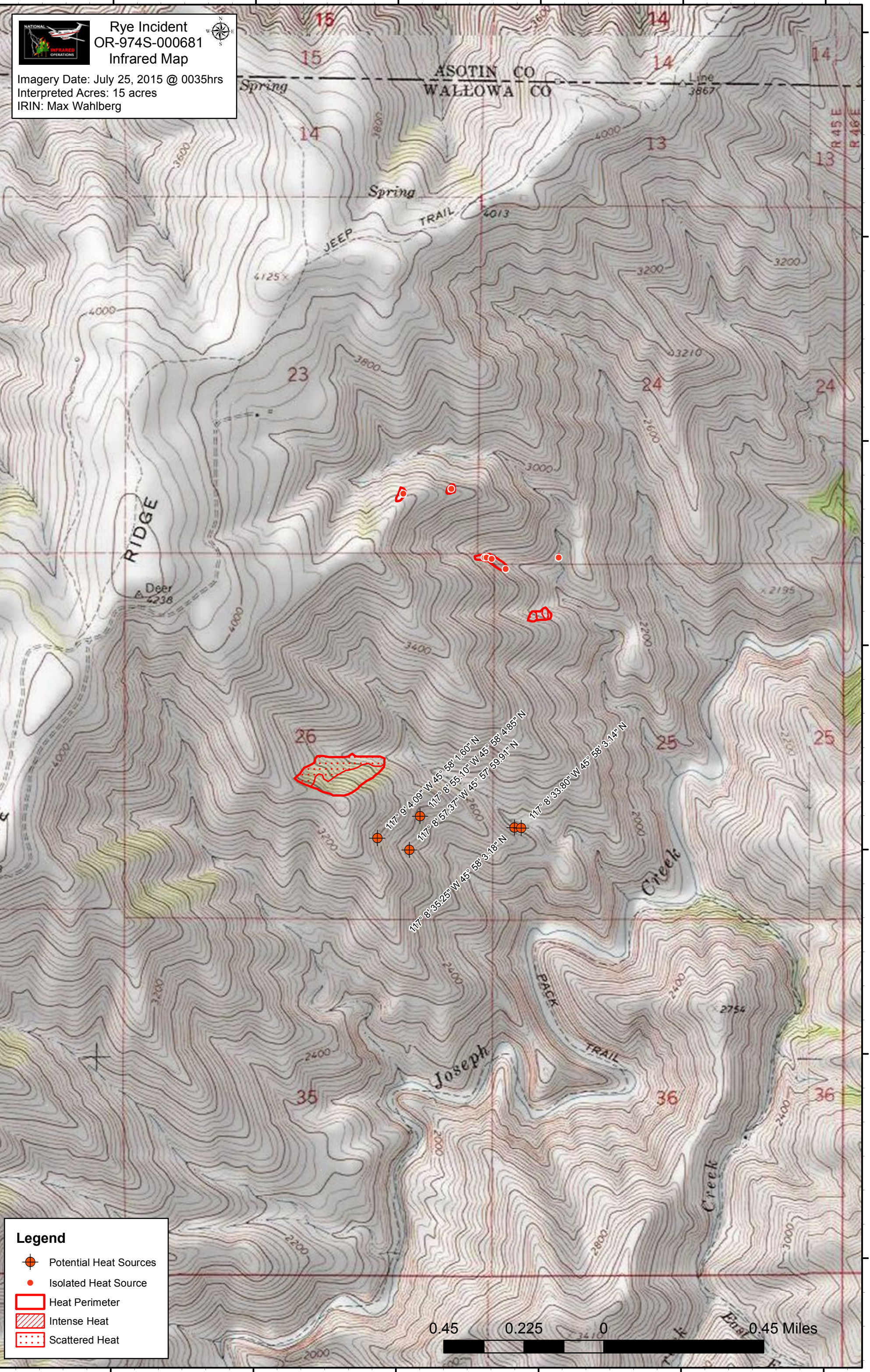
46°0'0"N 45°59'30"N 45°59'0"N 45°58'30"N 45°58'0"N 45°57'30"N 45°57'0"N



Rye Incident
OR-974S-000681
Infrared Map

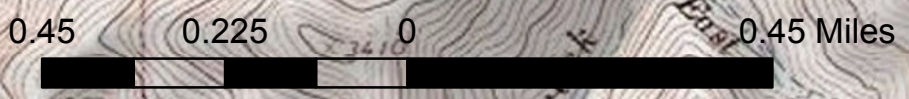


Imagery Date: July 25, 2015 @ 0035hrs
Interpreted Acres: 15 acres
IRIN: Max Wahlberg



Legend

- Potential Heat Sources
- Isolated Heat Source
- Heat Perimeter
- Intense Heat
- Scattered Heat



117°10'0"W 117°9'30"W 117°9'0"W 117°8'30"W 117°8'0"W 117°7'30"W