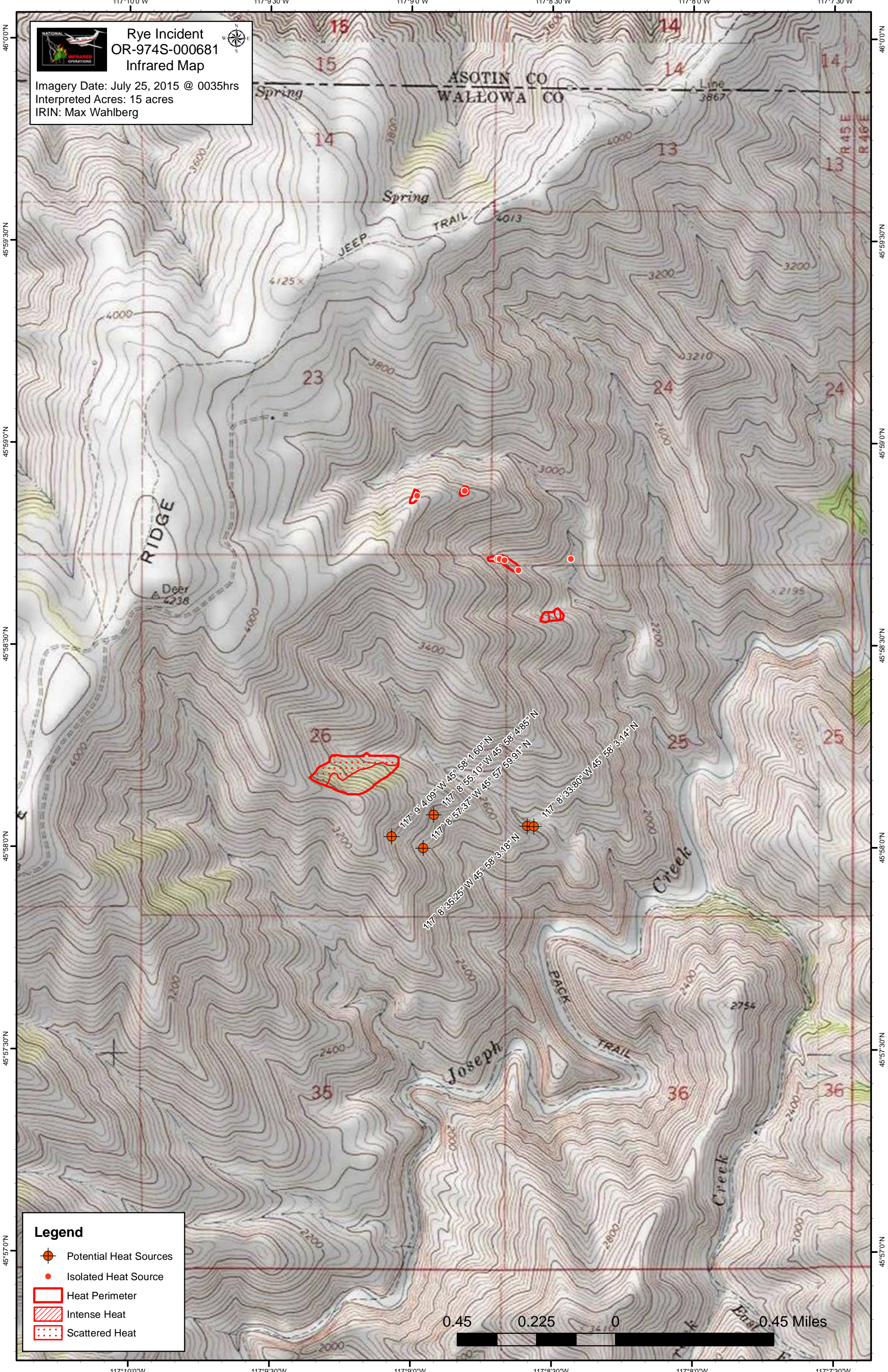


117°10'0"W 117°9'30"W 117°9'0"W 117°8'30"W 117°8'0"W 117°7'30"W



Rye Incident  
OR-974S-000681  
Infrared Map








Imagery Date: July 25, 2015 @ 0035hrs  
Interpreted Acres: 15 acres  
IRIN: Max Wahlberg

46°0'0"N  
45°59'30"N  
45°59'0"N  
45°58'30"N  
45°58'0"N  
45°57'30"N  
45°57'0"N

46°0'0"N  
45°59'30"N  
45°59'0"N  
45°58'30"N  
45°58'0"N  
45°57'30"N  
45°57'0"N

**Legend**

-  Potential Heat Sources
-  Isolated Heat Source
-  Heat Perimeter
-  Intense Heat
-  Scattered Heat

0.45 0.225 0 0.45 Miles

117°10'0"W 117°9'30"W 117°9'0"W 117°8'30"W 117°8'0"W 117°7'30"W