


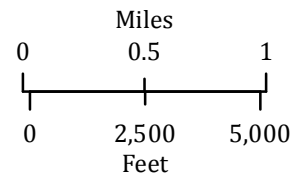


Stouts Creek OR-732S-000090 Infrared Interpretation

Imagery Date:
08/03/2015 2242 PDT

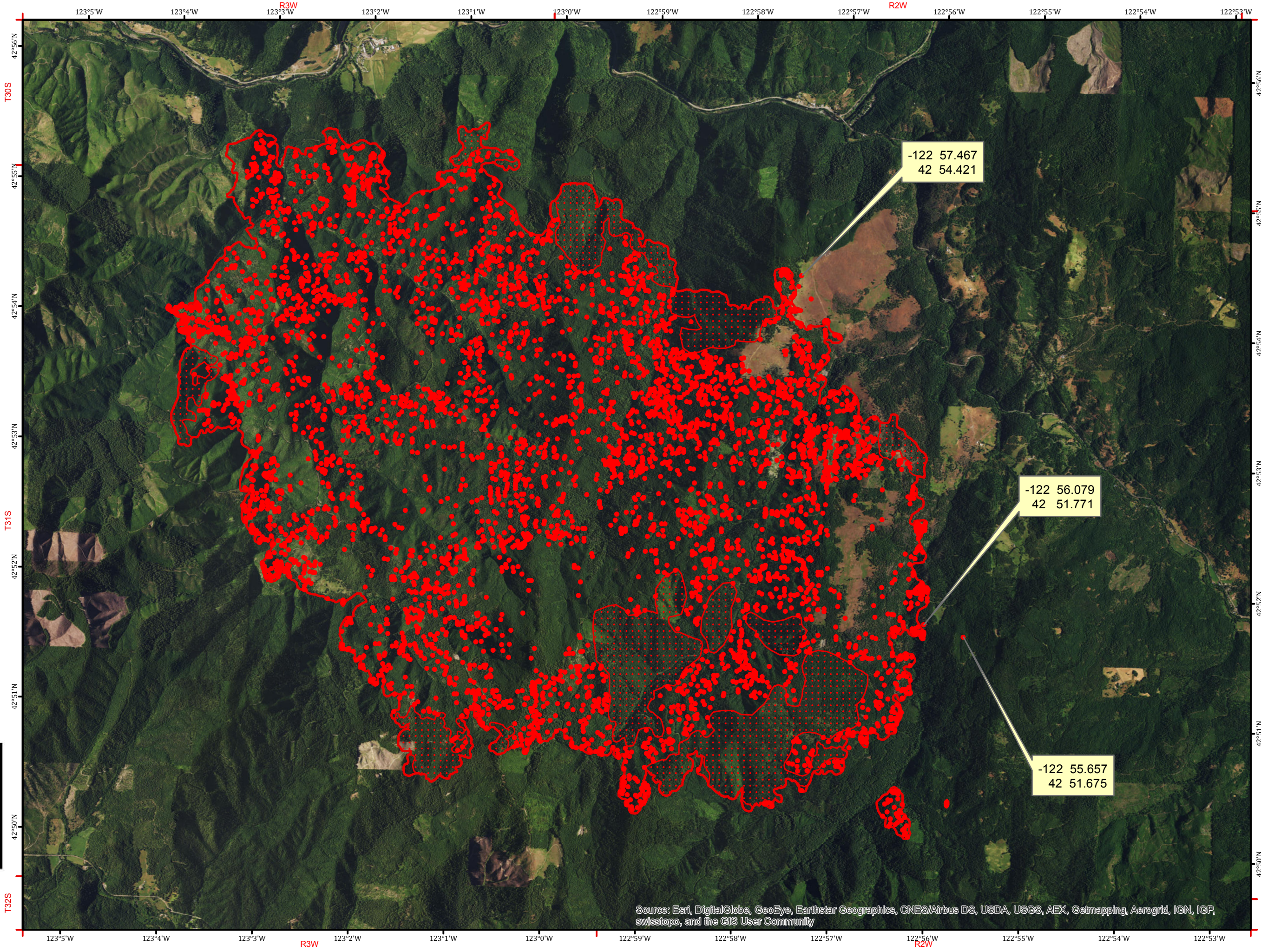
-  Heat Perimeter
-  Scattered Heat
-  Isolated Heat Sources



Datum: North American 1983



IRIN-T: Howard Harrison
Map produced:
08/04/2015 0245 PDT
Interpreted size: 17,166 acres



Source: Esri, DigitalGlobe, GeoEye, Earthstar Geographics, CNES/Airbus DS, USDA, USGS, AEX, Getmapping, Aerogrid, IGN, IGP, swisstopo, and the GIS User Community