



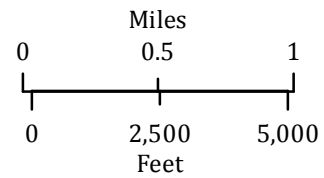


Stouts Creek OR-732S-00090 Infrared Interpretation

Imagery Date:
08/05/2015 2234 PDT

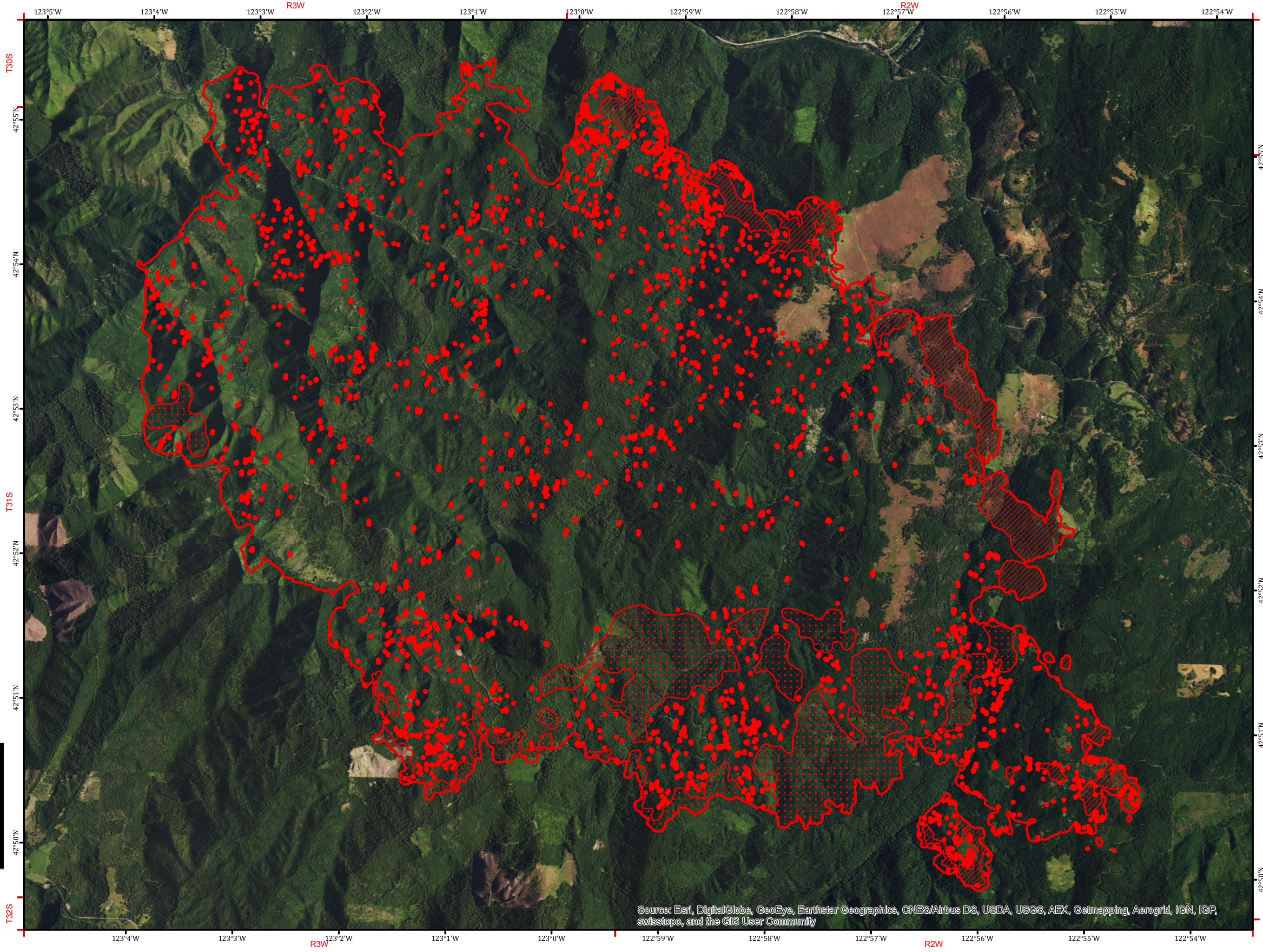
-  Heat Perimeter
-  Intense Heat
-  Scattered Heat
-  Isolated Heat Sources



Datum: North American 1983



IRIN-T: Howard Harrison
Map produced:
08/06/2015 0321 PDT
Interpreted size: 19,970 acres



Source: Esri, DigitalGlobe, GeoEye, Earthstar Geographics, CNES/Airbus DS, USDA, USGS, AEX, Getmapping, Aerogrid, IGN, IGP, swisstopo, and the GIS User Community