



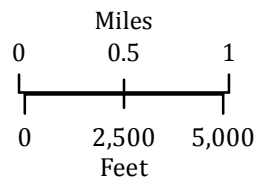


**Stouts Creek**  
OR-732S-000090  
Infrared Interpretation  
Imagery Date:  
8/11/2015 2018 hrs

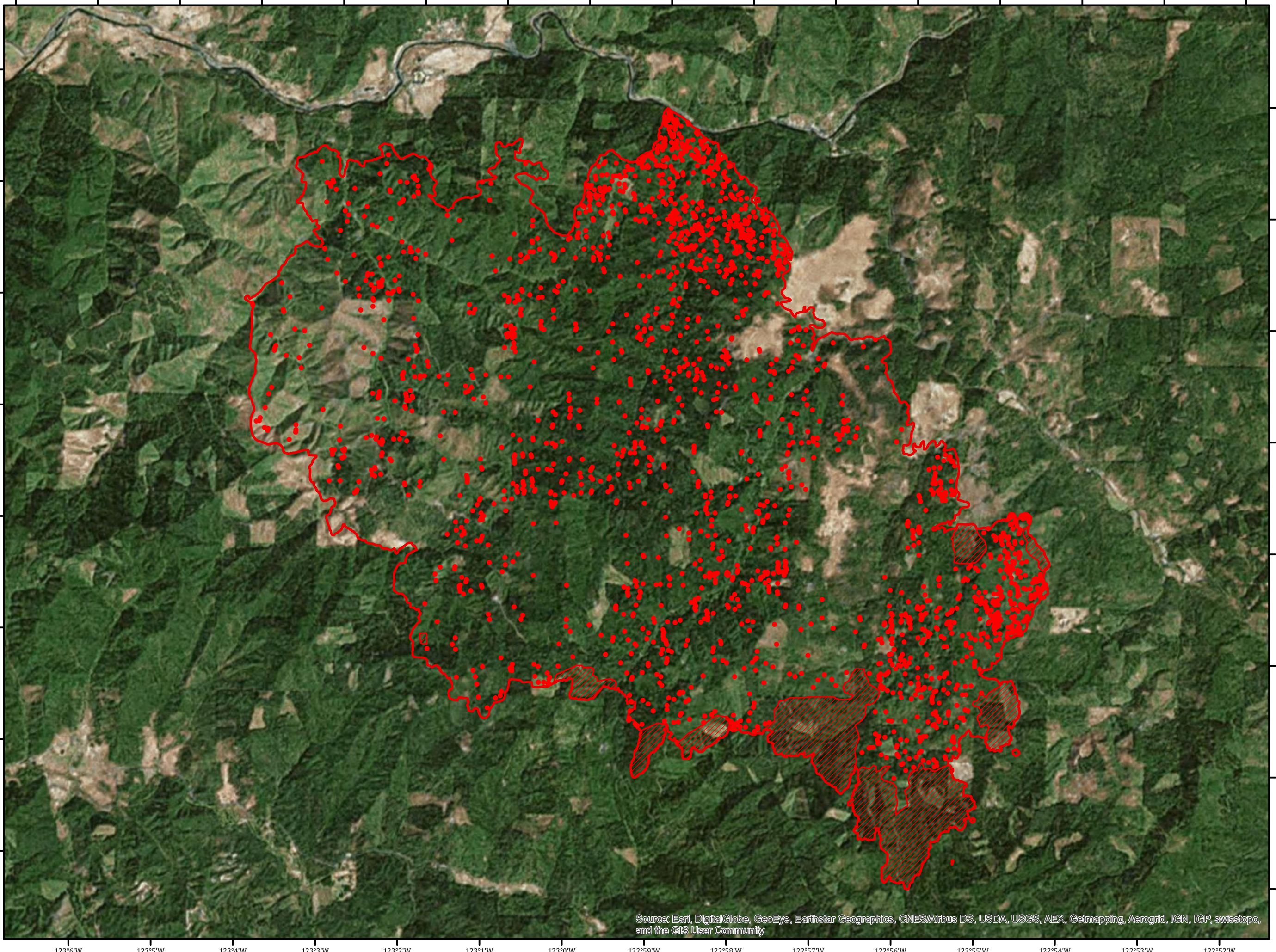
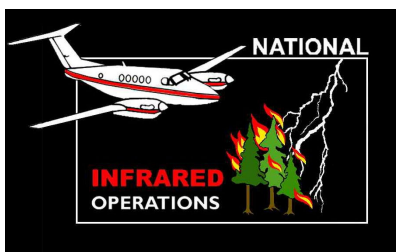
-  Heat Perimeter
-  Intense Heat
-  Isolated Heat Sources
-  Previous Heat Perimeter



IRIN: Jacob Rosenberg  
Map produced:  
08/10/2015 2235 hrs  
Interpreted IR Perimeter: 23,317 Acres  
Change in Heat Perimeter: 819 Acres



Datum: North American 1983



Source: Esri, DigitalGlobe, GeoEye, Earthstar Geographics, CNES/Airbus DS, USDA, USGS, AEX, Getmapping, Aerogrid, IGN, IGP, swisstopo, and the GIS User Community